



## Delacourt Road, SE3

### £400,000

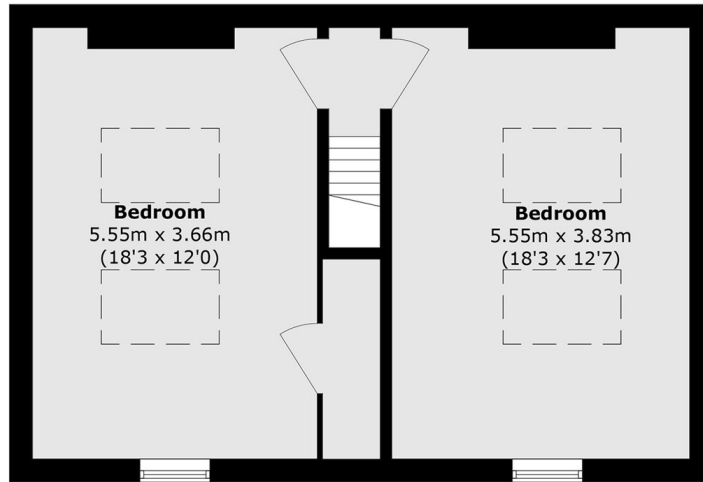
Arranged over the first and top floors, this spacious two bedroom conversion offers a modern and contemporary finish throughout. The flat is entered via a private entrance. To the front is a spacious reception room with large sash windows and ample room for both living and dining space. To the rear sits a modern kitchen and dining area finished to a contemporary standard, alongside a stylish four piece family bathroom. Upstairs, the top floor offers two generous double bedrooms, each with excellent natural light and plenty of space for storage, creating a well-balanced and comfortable home.

Ideally positioned for Westcombe Park station with Blackheath Royal Standard just moments away for cafés, shops and local amenities. Greenwich Park and the open heath are also within easy reach.

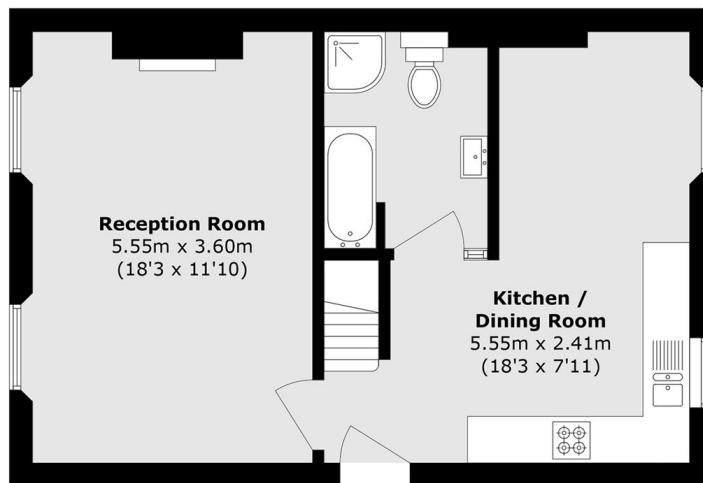
### Features

- Two Bedroom Flat
- Beautifully Presented
- Private Entrance
- 1000 Sq Ft
- Close To Amenities
- Chain Free

# Delacourt Road, London, SE3



**Second Floor**



**First Floor**

Total area (approx.): 93.8 sq. m (1009.7 sq. ft)