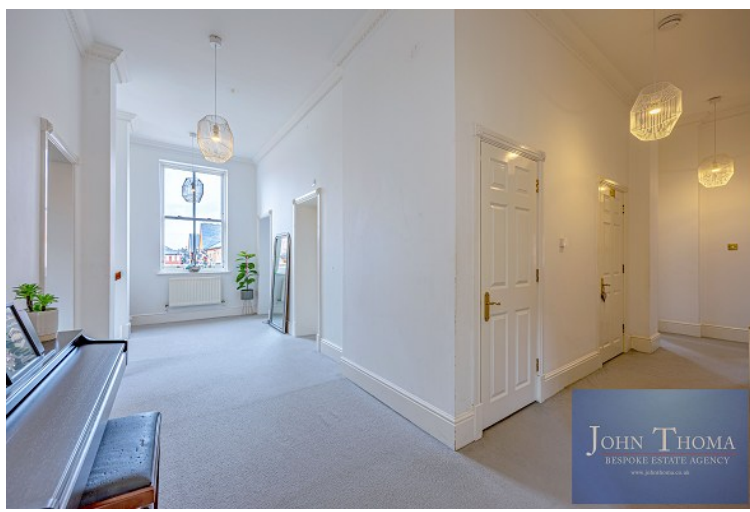




A huge three bedroom apartment which is completely "chain free" in the much sought after location of Repton Park.

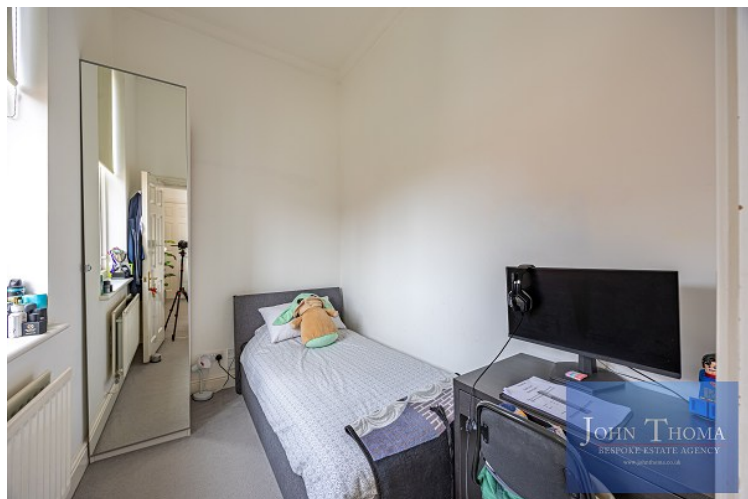
The property has a spacious lounge, a dining area, fitted kitchen, two double bedrooms with en-suites and fitted wardrobes, the third bedroom is a large single and there is a shower room, the apartment has ample storage and there are two allocated parking spaces with visitors parking.

## Devonshire House, Repton Park

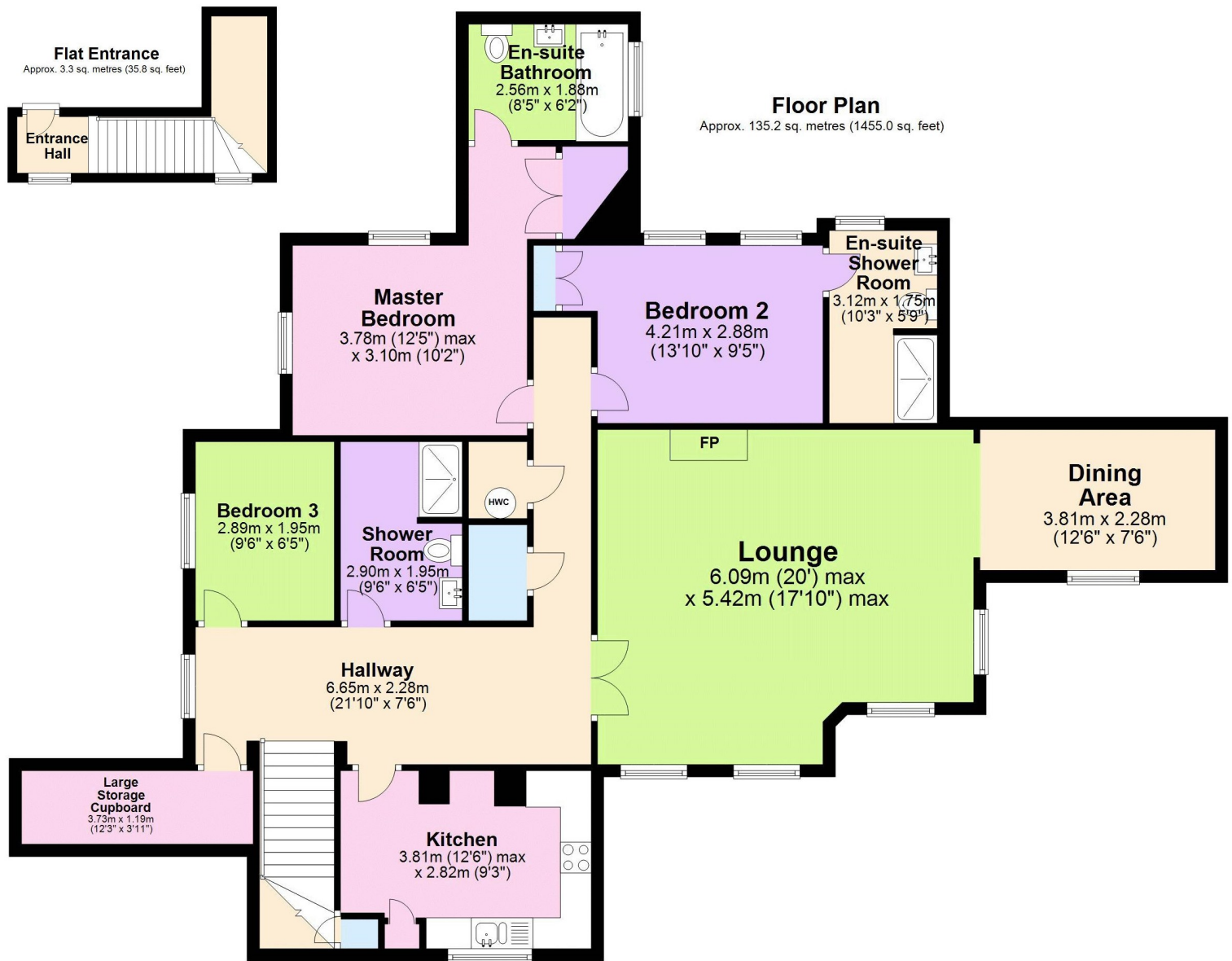


- ◆ A SPACIOUS LOUNGE MEASURING 20' x 17' 10" AND DINING AREA WITH HIGH CEILINGS AND SASH WINDOWS
- ◆ A FITTED KITCHEN MEASURING 12' 6" x 9' 3" WITH GRANITE WORK SURFACES AND INTEGRATED APPLIANCES
- ◆ THERE ARE TWO LARGE DOUBLE BEDROOMS WITH EN-SUITES AND FITTED WARDROBES
- ◆ BEDROOM THREE IS A LARGE SINGLE IN SIZE AND THERE IS A SEPARATE SHOWER ROOM

- ◆ THE APARTMENT HAS AMPLE STORAGE AND A SPACIOUS HALLWAY MEASURING 21' 10" x 7' 6"
- ◆ THERE ARE TWO ALLOCATED PARKING SPACES AND VISITORS PARKING
- ◆ 24 HOUR CONCIERGE AND AN ON SITE VIRGIN ACTIVE GYM AND SPA
- ◆ LONG LEASE AND COMPLETELY CHAIN FREE



Agent Note: The information provided about this property does not constitute or form part of an offer or contract, nor may it be regarded as representations. All interested parties must verify accuracy and your solicitor must verify tenure/lease information, fixtures & fittings and, where the property has been extended/converted, planning/building regulation consents. All dimensions are approximate and quoted for guidance only as are floor plans which are not to scale and their accuracy cannot be confirmed. Reference to appliances and/or services does not imply that they are necessarily in working order or fit for the purpose.



Total area: approx. 138.5 sq. metres (1490.8 sq. feet)

Score	Energy rating	Current	Potential
92+	A		
81-91	B		
69-80	C	70 C	74 C
55-68	D		
39-54	E		
21-38	F		
1-20	G		

[John Thoma Bespoke Estate Agency, Chigwell Branch](#)

*The Coach House 201 High Road Chigwell Essex IG7 5BJ*

[020 8340 8833](tel:02083408833) Local call rate