

SNELLERS

ESTATE AGENTS



Kings Terrace, TW7

£799,950

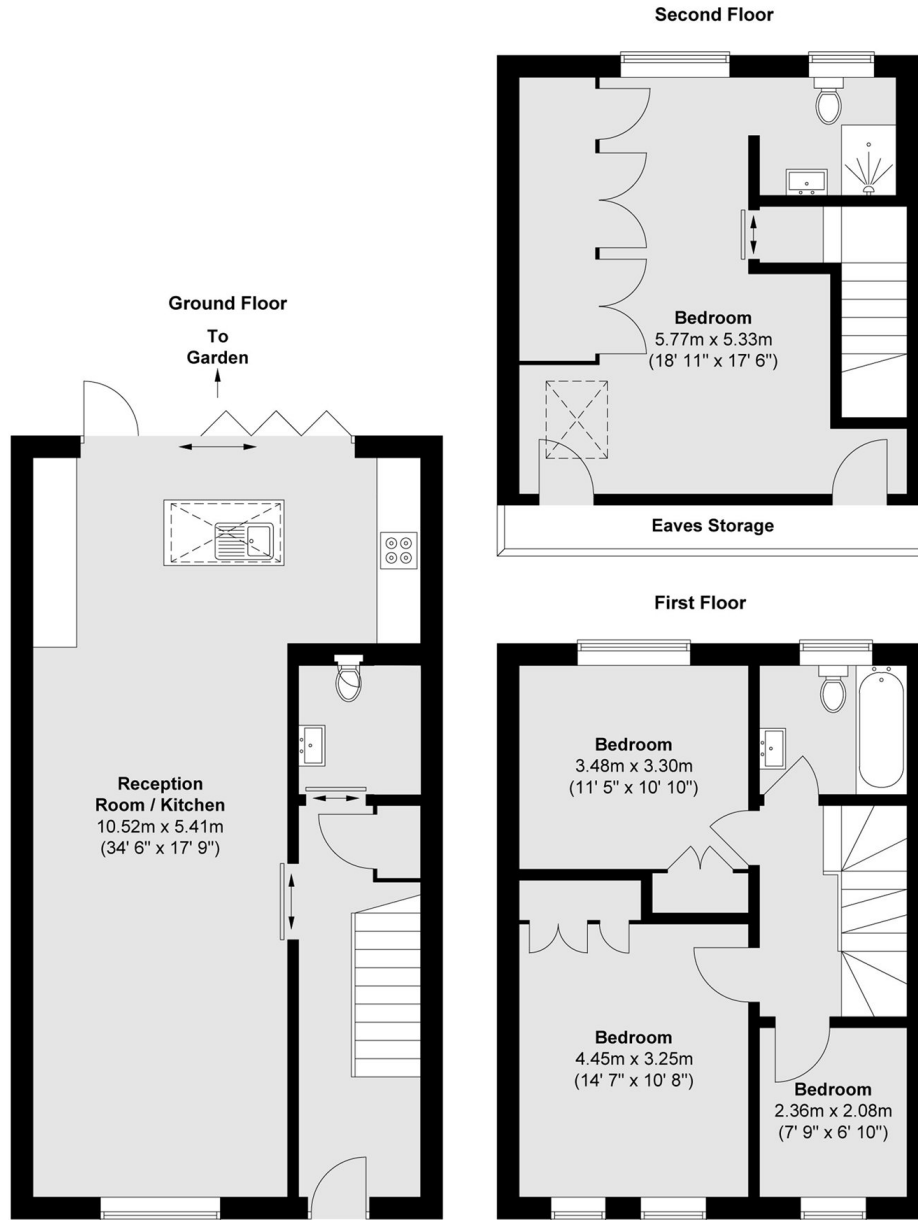
A beautifully presented four bedroom period home offering over 1,380 sq ft of accommodation arranged across three floors. The heart of the home is a stunning 34ft open-plan kitchen, dining and reception room with bi-fold doors opening onto the rear garden, creating an ideal space for modern family living and entertaining. Upstairs are three bedrooms and a family bathroom, while the top floor is dedicated to an impressive principal suite with built-in storage, eaves storage and an ensuite shower room. Combining period charm with contemporary style, this is a superb family home in the heart of Old Isleworth.

Situated in the heart of Old Isleworth, Kings Terrace enjoys a charming riverside setting within one of the area's most sought-after residential pockets. The property is moments from picturesque walks along both the River Thames and River Crane. Isleworth station is within easy reach, providing direct services into London Waterloo, and nearby Richmond, St Margarets and Twickenham offer a wider selection of restaurants, boutiques and leisure facilities.

- Four Bedrooms • Period Home • Open-Plan Living •

SNELLERS

ESTATE AGENTS



Total area (approx.) : 128.3 sq. m (1381 sq. ft)
(Excluding eaves storage)

Snellers St. Margarets Sales
36 Crown Road
St Margarets
TW1 3EH
020 8892 8008
stmargaretssales@snellers.co.uk

Energy Rating: C We aim to make our particulars both accurate and reliable. However they are not guaranteed; nor do they form part of an offer or contract. If you require clarification on any points then please contact us, especially if you're traveling some distance to view. Please note that appliances and heating systems have not been tested and therefore no warranties can be given as to their good working order