



## Province Square, E14

£553 Per week

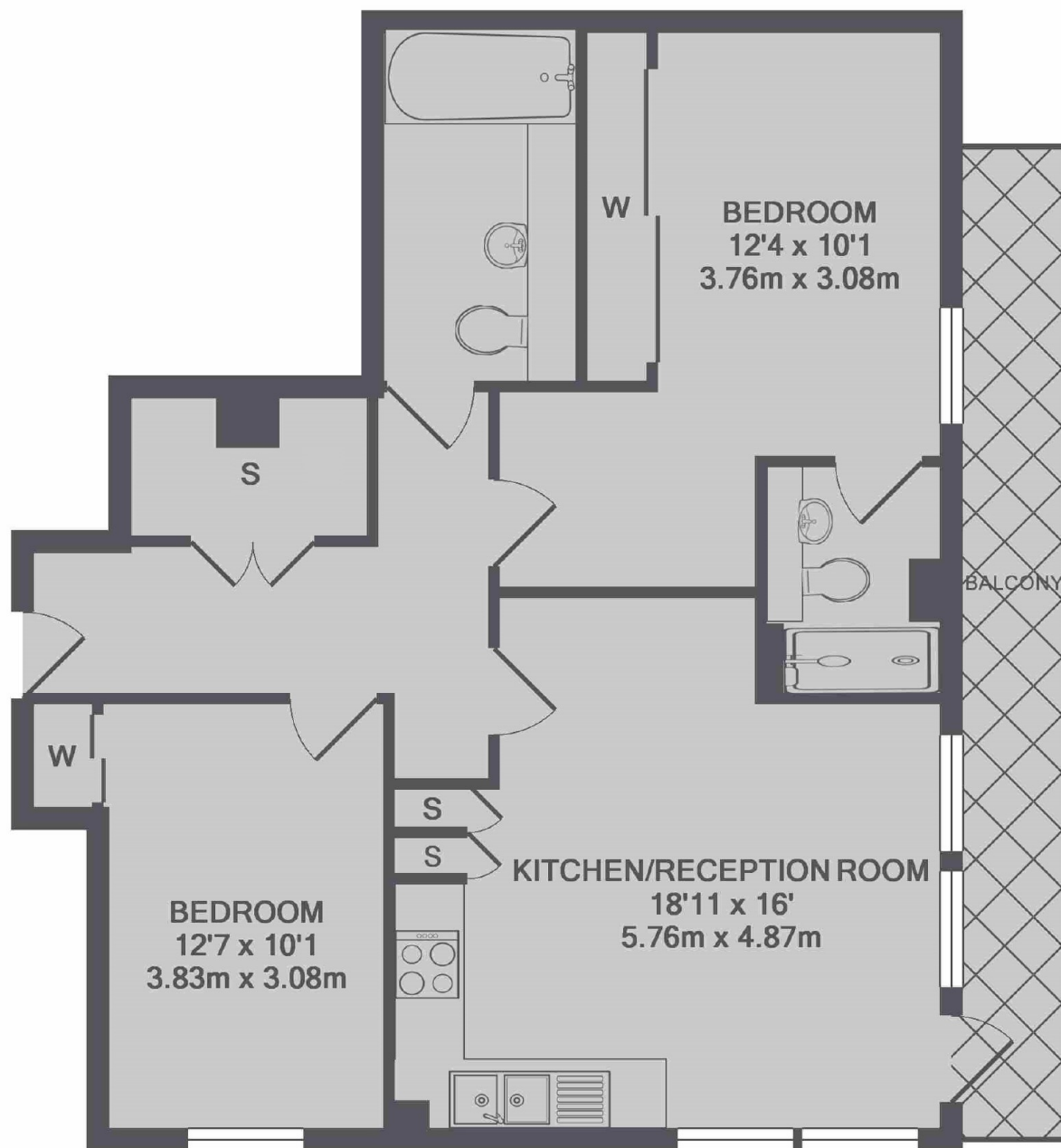
A spacious two bedroom apartment on the eleventh floor of this sought after development. This bright apartment has an open plan reception room, on-site concierge and a balcony with Marina and Canary Wharf views.

Located a few moments from Canary Wharf for a selection of bars, shops and restaurants. Blackwall DLR provides direct connections to Central London and City airport.

### Features

- Two Bedroom
- Two Bathroom
- Eleventh Floor
- Modern
- Balcony
- Concierge

# Province Square, London, E14



TOTAL APPROX. FLOOR AREA 65.3 SQ.M. (703 SQ.FT.)