



**Guide Price**  
**£375,000**

**Freehold**

3x  2x  1x 

**Holters Mill, The Spires,  
Canterbury, Kent, CT2**

**OVER 60?**

Secure this property  
for up to **59% less!**

*Wards*  
Helping you move forwards



## Main features

- Being sold with no onward chain
- Freshly redecorated throughout, ready for you to put your own stamp on
- Fantastic, quiet location close to Canterbury West Station
- Gated development with garage parking
- En suite shower room

## Accommodation

### GROUND FLOOR

- Entrance Hallway
- Cloakroom
- Kitchen: 8'8 x 7'3 (2.64m x 2.21m)
- Lounge/Diner: 20'8 x 15'5 (6.30m x 4.70m)
- Conservatory: 10'1 x 9'9 (3.08m x 2.97m)

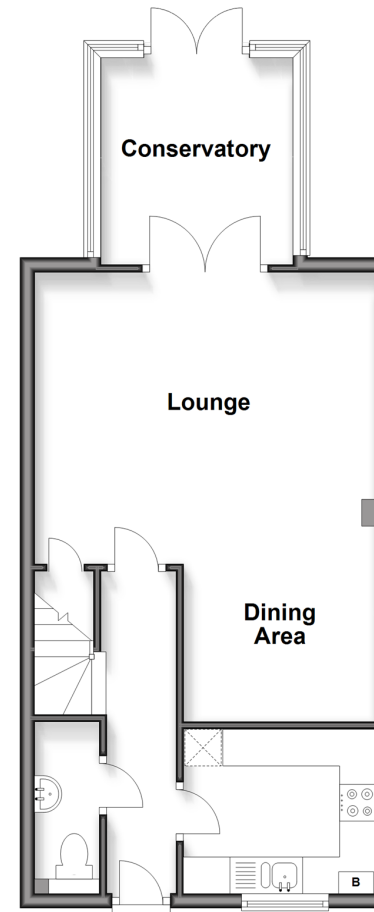
### FIRST FLOOR

- Landing
- Bedroom 1: 11'10 x 10'1 (3.61m x 3.08m)
- En Suite Shower Room: 6'4 x 5'11 (1.93m x 1.80m)
- Bathroom
- Bedroom 2: 10'0 x 8'8 (3.05m x 2.64m)
- Bedroom 3: 10'1 x 6'5 (3.08m x 1.96m)

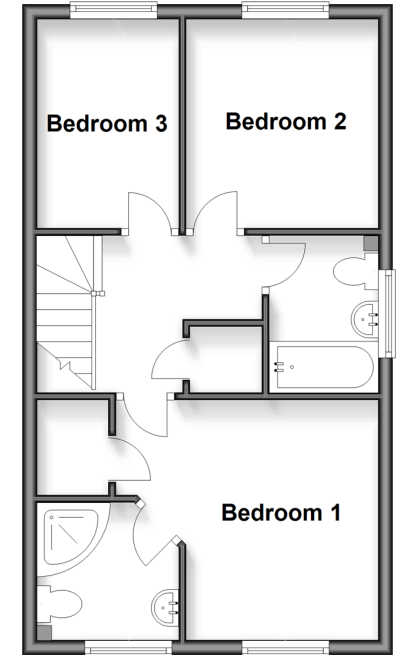
### OUTSIDE

- Garage
- Rear Garden

**Ground Floor**  
Approx. 47.5 sq. metres (511.6 sq. feet)



**First Floor**  
Approx. 39.8 sq. metres (428.1 sq. feet)



**Unable to display material information. Please check with the branch for material information details for this property**



10349528/20260418/TG/JT