



+44 1843 265050
contact@footprintsproperty.co.uk
footprintsproperty.co.uk

Station Road, Walmer, Deal, CT14 7RL

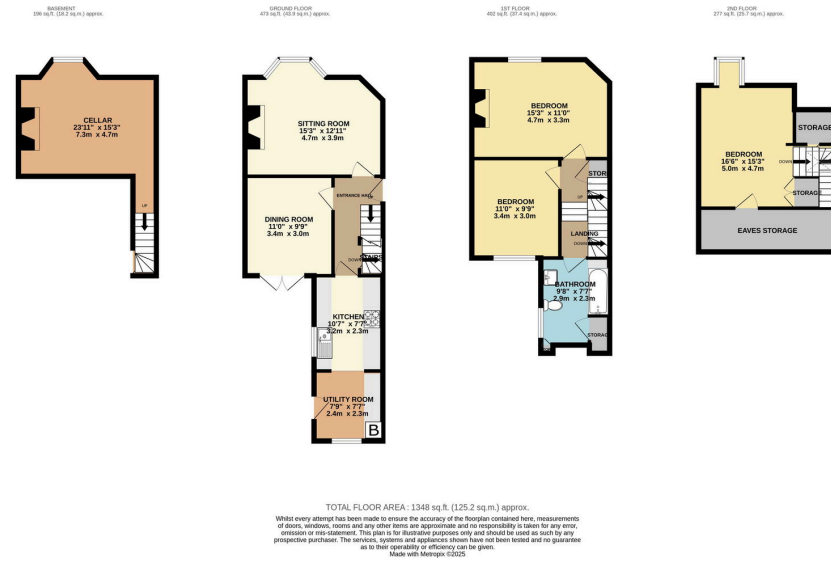
£300,000

3 1 2



- EPC RATING E
- COUNCIL TAX BAND D
- THREE BEDROOM END OF TERRACE
- BEAUTIFULLY PRESENTED FAMILY HOME
- PRETTY GARDEN
- CLOSE TO MAINLINE TRAIN STATION
- SHOPS AT THE END OF THE ROAD
- SCHOOLS NEARBY
- EARLY VIEWING RECOMMENDED
- QUOTE JB0460 WHEN ENQUIRING





Situated along the picturesque Station Road in Walmer, Deal, this enchanting three-bedroom home offers a rare blend of period charm and contemporary comfort. Perfectly positioned for convenient living, it sits just a stone's throw from the mainline train station—making commuting and exploring the wider region an absolute breeze. The bustling shops at the end of the road cater to daily needs and spontaneous treats, while easy access in and out of Deal opens up the delights of the coast and nearby countryside.

Set over four floors, this property welcomes you into a lifestyle of both character and versatility. The elegant ground floor is beautifully presented, with light-filled living spaces that flow seamlessly, inviting both relaxation and entertaining.



If you have instructed another agent to sell your house and instruct eXp World Ltd to sell your property at the same time, then you could be liable to pay both agents. It is recommended that you check the contract you have with your current agent.

FOOTPRINTS Property is an approved agent at eXp World UK Limited, trading as eXp UK, registered at C/O Corporation Service Company (UK) Limited, 5 Churchill Place, 10th Floor, London, United Kingdom, E14 5HU. Company number 12016573. VAT no 327 4120 29.