



Stonehill

Hatfield Woodhouse, Doncaster, DN7 6NS

Offers Over £1,250,000

Nestled in the picturesque village of Hatfield Woodhouse, Doncaster, this remarkable detached house offers an exceptional living experience. Set within a generous 0.75 acres, the property has been constructed to the highest standards, ensuring both luxury and comfort.

As you enter, you are greeted by an expansive open plan kitchen and family room, perfect for entertaining and family gatherings. This inviting space seamlessly flows into an indoor heated swimming pool room, complete with a changing area, W/C and sauna, providing a private oasis for relaxation and leisure. The ground floor also boasts two additional reception rooms, a well-equipped gym, a convenient downstairs w/c, and a utility room, catering to all your lifestyle needs.

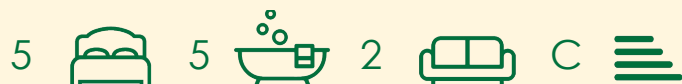
The first floor features five generously sized bedrooms, each designed with comfort in mind. The master bedroom includes a delightful balcony, offering a serene spot to enjoy the surrounding views. With a total of four bathrooms and shower rooms, this home ensures ample facilities for family and guests alike.

Outside, the property is equally impressive, featuring beautifully maintained lawned gardens, a tennis court for the sports enthusiasts, and a patio area ideal for alfresco dining and entertaining. The double gardens provide a sense of space and privacy, while the ample off-road parking accommodates several vehicles.

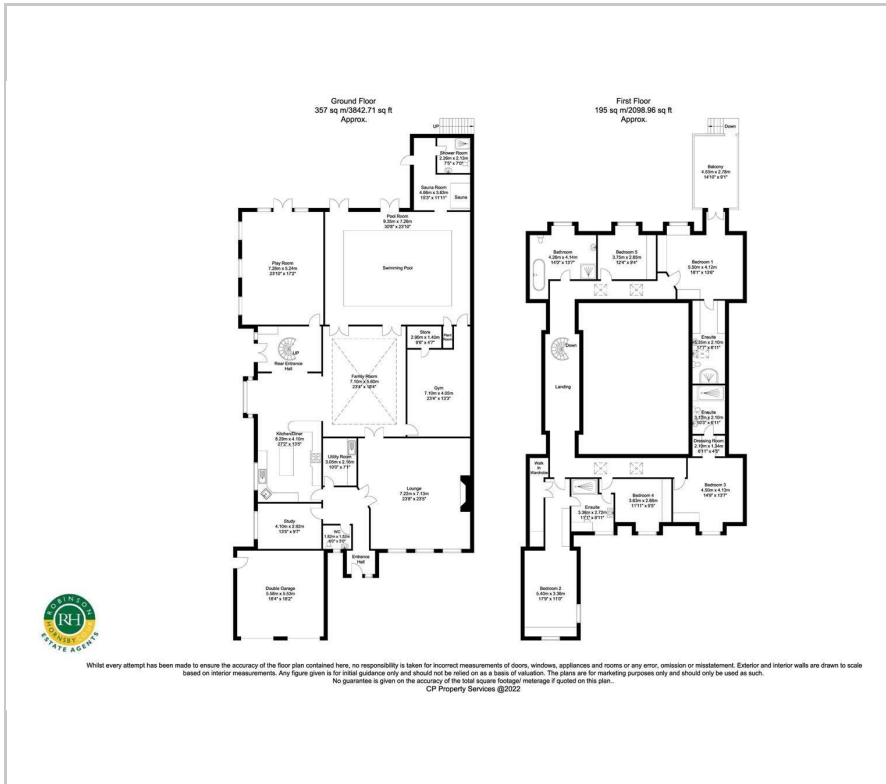
- Stunning five bedroom detached family home
- Situated in the popular Village of Hatfield Woodhouse
- Open plan kitchen/dining room leading to family room
- Swimming pool with changing area and sauna
- Five double bedrooms, master with balcony
- Five bathroom/shower rooms in total
- Stunning lawned gardens with patio area and tennis court
- Off road parking and double garage

Viewing

Please contact our Office on 01302 751616 if you wish to arrange a viewing appointment for this property or require further information.



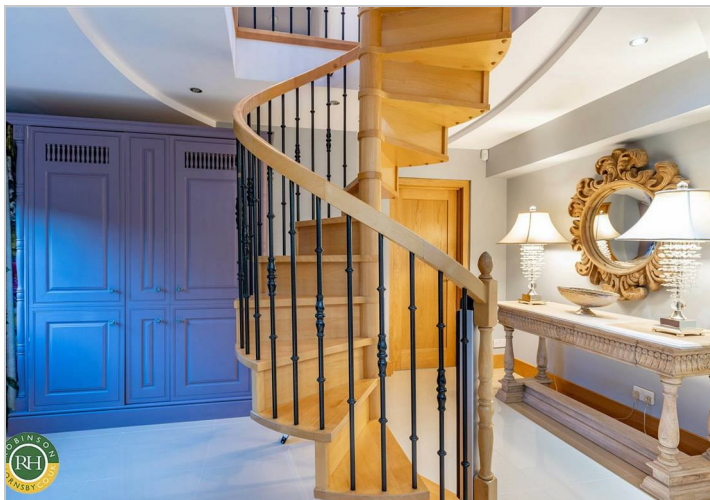
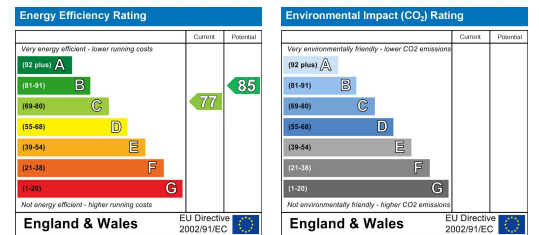
Floor Plan



Area Map



Energy Efficiency Graph



These particulars, whilst believed to be accurate are set out as a general outline only for guidance and do not constitute any part of an offer or contract. Intending purchasers should not rely on them as statements of representation of fact, but must satisfy themselves by inspection or otherwise as to their accuracy. No person in this firm's employment has the authority to make or give any representation or warranty in respect of the property.