

**TO LET**



**Connaught Gardens, Morden, SM4**  
**£1,800 pcm**

## Connaught Gardens, Morden, SM4

Date available: 20th May 2026

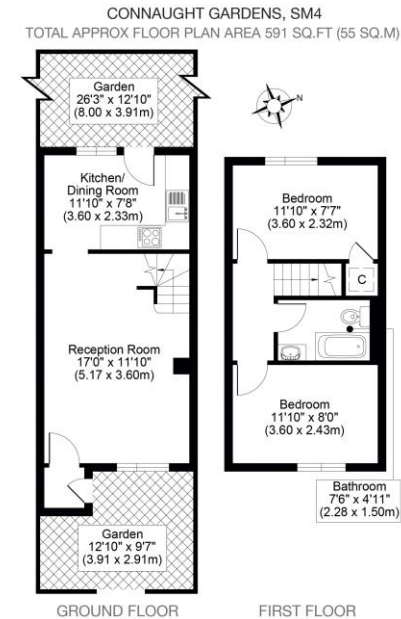
Deposit: £2,076

Unfurnished

Council Tax band: C

- UNFURNISHED HOUSE TO RENT
- 2 DOUBLE BEDROOMS
- LIVING/DINING ROOM
- NEW MODERN KITCHEN/DINER
- REFRESHED BATHROOM
- CLOSE TO MORDEN TUBE
- SHARED PARKING + STREET PARKING

2 bedroom UNFURNISHED terraced house in a cul-de-sac, with own garden and shared parking, accessible to Morden Park & Morden Tube Station. Just redecorated and updated, now with a new modern fitted kitchen/diner, white bathroom suite with shower over, 2 double bedrooms, spacious living/dining room, low maintenance Astro Turf rear garden & patio with rear access. Available immediately with NO CHAIN, kitchen appliances included, Gas central heating & UPVC Double glazed windows. Keys Held, SOLE AGENT. EPC band C. Merton Council Tax Band C = £1,902.69 pa. Viewing highly recommended.



All measurements, walls, doors, windows, fittings and their appliances, their size and locations are shown conventionally and are approximate only and cannot be regarded as being a representation either by the seller or his agent.

optic  
MEDIA  
opticmedia.co.uk

## Martin & Co Sutton

32 Stonecot Hill • Sutton • SM3 9HE

T: 0208 337 9647 • E: [sutton@martinco.com](mailto:sutton@martinco.com)

# 0208 337 9647

<http://www.martinco.com/>

**MARTIN&CO**

**Accuracy:** References to the Tenure of a Property are based on information supplied by the Seller. The Agent has not had sight of the title documents. A Buyer is advised to obtain verification from their Solicitor. Items shown in photographs including but not limited to carpets, fixtures and fittings are not included unless specifically mentioned within the sales particulars. They may however be available by separate negotiation. Buyers must check the availability of any property and make an appointment to view before embarking on any journey to see a property. No person in the employment of the agent has any authority to make any representation about the property, and accordingly any information given is entirely without responsibility on the part of the agents, sellers(s) or lessors(s). Any property particulars are not an offer or contract, nor form part of one. **Sonic / laser Tape:** Measurements taken using a sonic / laser tape measure may be subject to a small margin of error. **All Measurements:** All Measurements are Approximate. **Services Not tested:** The Agent has not tested any apparatus, equipment, fixtures and fittings or services and so cannot verify that they are in working order or fit for the purpose. A Buyer is advised to obtain verification from their Solicitor or Surveyor.