



Merryweather Place, SE10 £475,000

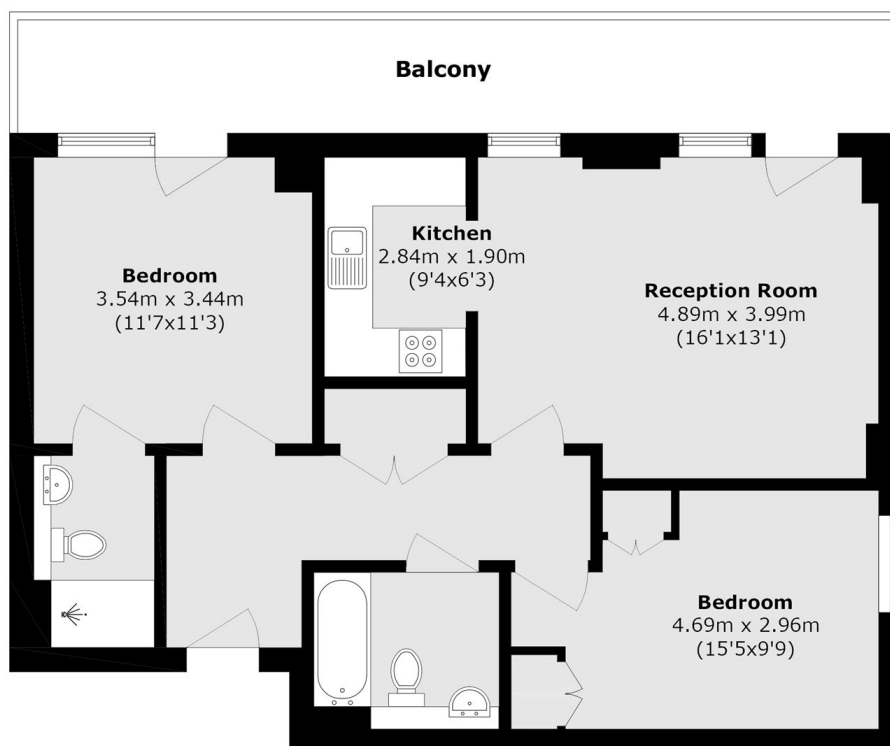
A well presented two bedroom two bathroom modern flat in a sought after location which benefit's from views of the creek as well as city skylines including shard and London eye directly from the private balcony, this would make an ideal purchase and a viewing is highly recommended.

Paxton point is conveniently located just off of Greenwich High Road for all the attractions Royal Greenwich has to offer, moments from both the DLR at Deptford Bridge as well as the DLR and mainline at Greenwich station; giving fast and easy access into both Canary Wharf and the City.

Features

- Two Bedroom
- Two Bathroom
- Modern
- Private Balcony
- Sought After Location
- Creek View

Merryweather Place, London, SE10



Total area (approx.): 70.3 sq. m (756.7 sq. ft)

Balcony area (approx.): 15.1 sq. m (162.5 sq. ft)