



Luscombe Maye

Since 1873

Elmwood Park, Loddiswell, Kingsbridge, TQ7 4SA

£250,000

🛏️ 2 🪑 1 🚗 1



- Two Bedrooms
- Allocated Parking
- Open Plan Living
- Stunning Views
- Oil Fired Central Heating
- Log Burner
- Wood Shed
- Garden
- Garage





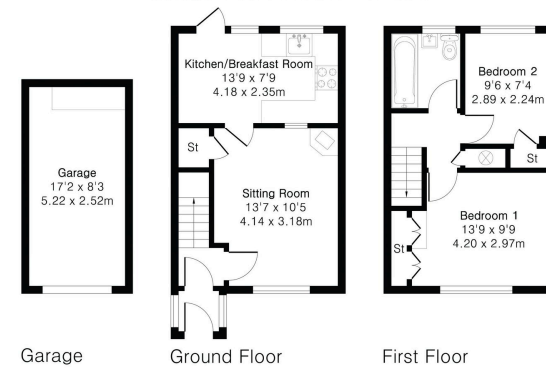
An immaculately presented two-bedroom home with a log burner, modern kitchen/diner, and garden access. Benefits include allocated parking and a garage.

Approximate Gross Internal Area 751 sq ft - 70 sq m
(Including Garage)

Ground Floor Area 311 sq ft - 29 sq m

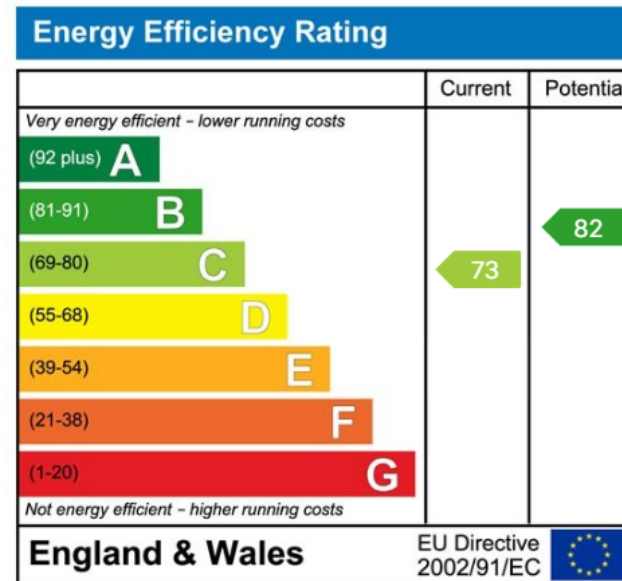
First Floor Area 298 sq ft - 28 sq m

Garage Area 142 sq ft - 13 sq m



PINK PLAN

Floor plans produced in accordance with RICS Property Measurement 2nd Edition. Although Pink Plan Ltd assumes the highest level of accuracy, measurements of doors, windows and rooms are approximate and no responsibility is taken for error, omission or misstatement. These plans are for representation purposes only and no guarantee is given on the total square footage of the property within this plan. The figure seen is for initial guidance only and should not be relied on as a basis of valuation.



Kingsbridge:
62 Fore Street, Kingsbridge TQ7 1PP
01548 857474
kingsbridge@luscombemaye.com
www.luscombemaye.com

Important Notice: Luscombe Maye gives notice that: 1. These particulars do not constitute an offer or contract or part thereof. 2. All descriptions, photographs and plans are for guidance only and should not be relied upon as statements or representations of fact. All measurements are approximate and not necessarily to scale. Any prospective purchaser must satisfy themselves of the correctness of the information within the particulars by inspection or otherwise. 3. Luscombe Maye does not have any authority to give any representations or warranties whatsoever in relation to this property (including but not limited to planning/building regulations), nor can it enter into any contract on behalf of the Vendor.