



Chalcombe Road, Kingsthorpe, Northampton  
**£220,000**



**YOUR MOVE**  
Hobin Roberts



IMPORTANT NOTE TO PURCHASERS: We endeavour to make our sales particulars accurate and reliable, however, they do not constitute or form part of an offer or any contract and none is to be relied upon as statements of representation or fact. The services, systems and appliances listed in this specification have not been tested by us and no guarantee as to their operating ability or efficiency is given. All measurements have been taken as guide to prospective buyers only, and are not precise. Floor plans where included are not to scale and accuracy is not guaranteed. If you require clarification or further information on any points, please contact us, especially if you are travelling some distance to view. Fixtures and fittings other than those mentioned are to be agreed with the seller.



## Description

Set within the popular location of Kingsthorpe is this very well presented and extended two bedroom semi detached bungalow with off street parking. The property benefits from an open plan living area with re-fitted kitchen and French doors leading to the rear garden. Further benefits include UPVc double glazing and gas radiator central heating. On entering the property and just off the hallway there are two double bedrooms and a re-fitted shower room. Following on through the open plan living area which benefits from a good sized extension is the kitchen area, which flows through to a dining and lounge area. Outside there are front and rear gardens and off street parking at the side of the bungalow. Kingsthorpe is a suburb north of Northampton. It is approximately 10 minutes drive to the Northampton Train Station with good services to London Euston, Milton Keynes, Birmingham and beyond. Locally it is a short walk to local amenities including Doctors' surgeries, dentists, chemists, banks, bakeries and supermarkets. Also just a few minutes walk away are frequent buses to larger shopping outlets in Northampton, Market Harborough, Leicester and Milton Keynes etc. Kingsthorpe is well served by local schools and those nearby include Good Shepherd Primary School, Kingsthorpe College and the University of Northampton.

## Council Tax

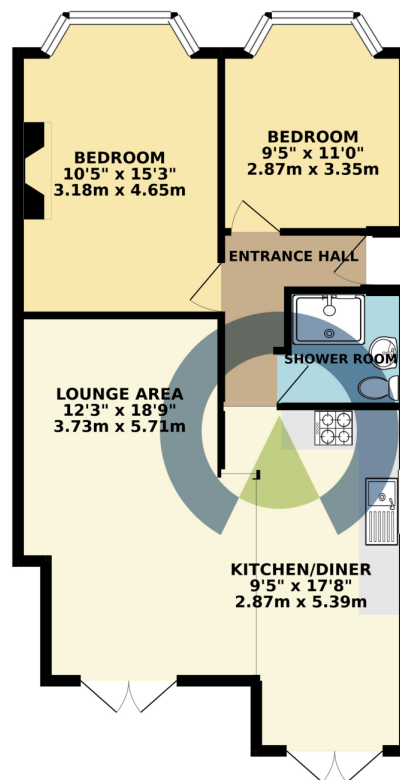
Band C

## EPC

EPC Rating E

For full EPC please contact the branch.

GROUND FLOOR 673.16 sq. ft.  
( 62.54 sq. m. )



TOTAL FLOOR AREA : 673.16 sq. ft. ( 62.54 sq. m. ) approx.

Whilst every attempt has been made to ensure the accuracy of the floorplan contained here, measurements of doors, windows, rooms and any other items are approximate and no responsibility is taken for any error, omission or mis-statement. This plan is for illustrative purposes only and should be used as such by any prospective purchaser. The services, systems and appliances shown have not been tested and no guarantee as to their operability or efficiency can be given.  
Made with Metropix ©2019

81 Harborough Road, Northampton, NN2 7SL  
01604 718392 \* Kingsthorpe@your-move.co.uk



**YOUR MOVE**  
Hobin Roberts

[your-move.co.uk](http://your-move.co.uk)