

BUTLER & STAG



Bow Road, Bow E3
London

£2,800 pcm



Bow Road, Bow E3

Conveniently located three bedroom flat within a secure development, just moments from both Bow Church and Bow Road stations.

- Three Double Bedroom Flat
- Secure Development
- Perfect for Three Professional Sharers
- Allocated Off-Street Parking Space
- Close to Bow Church and Bow Road Stations
- Plenty of Local Amenities
- Furnished
- Available from 21 August 2026





Conveniently located three bedroom flat set within a secure development, just moments from both Bow Church and Bow Road stations.

Perfectly suited to three professional sharers, the accommodation comprises of three true double bedrooms, a reception/dining space, a separate modern fitted kitchen and a contemporary bathroom.

Well-presented throughout, the property further benefits from an allocated off-street parking space and ample storage.

The location is rich in amenities with straightforward access towards the City in one direction and the conveniences of Stratford in the other. The ever-popular Victoria Park is also easily reachable.

Offered furnished and available from 21st August 2026.

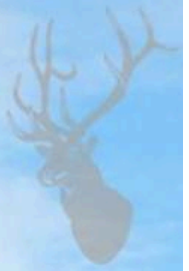
Council Tax band: C

EPC Energy Efficiency Rating: B

EPC Environmental Impact Rating: B







100
101
102
103
104
105
106
107
108
109
110
111
112
113
114
115
116
117
118
119
120
121
122
123
124
125
126
127
128
129
130
131
132
133
134
135
136
137
138
139
140
141
142
143
144
145
146
147
148
149
150
151
152
153
154
155
156
157
158
159
160
161
162
163
164
165
166
167
168
169
170
171
172
173
174
175
176
177
178
179
180
181
182
183
184
185
186
187
188
189
190
191
192
193
194
195
196
197
198
199
200

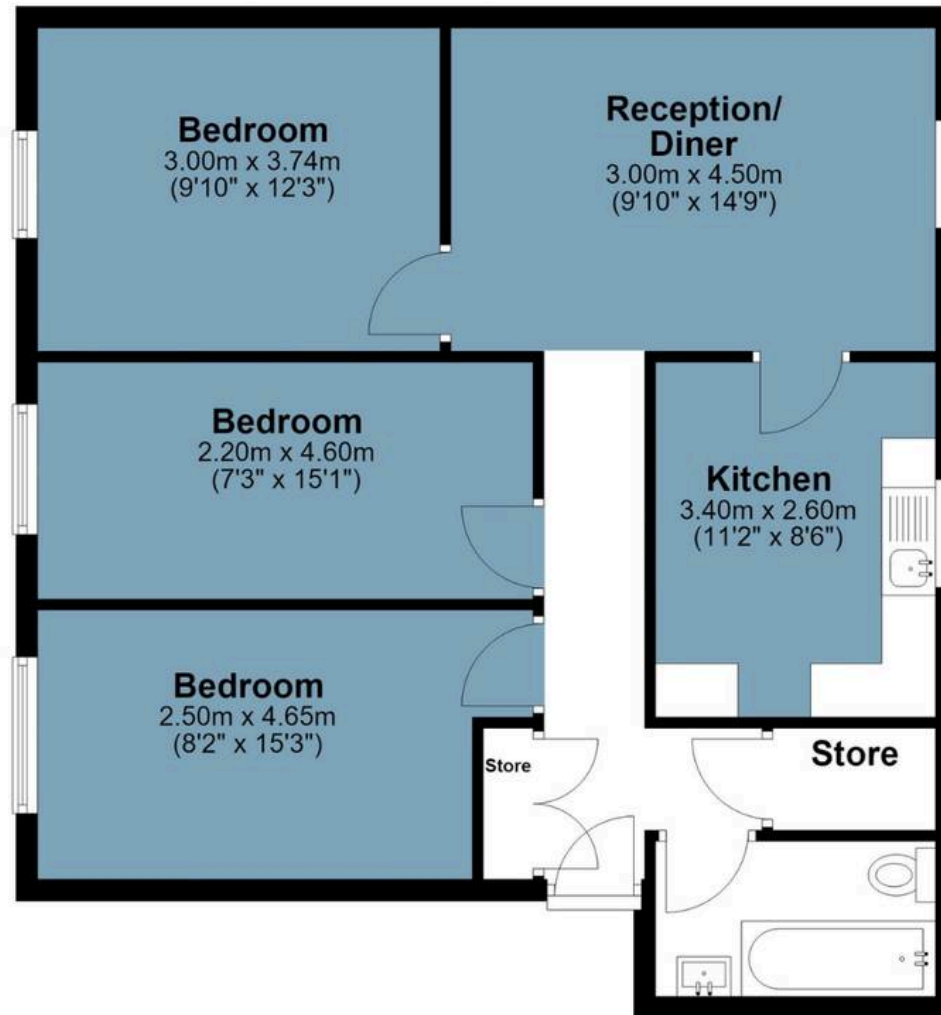


Bow Road

Approx. Gross Internal Area 69.0 sq. metres (742.2 sq. feet)

Second Floor

Approx. 69.0 sq. metres (742.2 sq. feet)



Measurements are approximate and for illustration purposes only. While we do not doubt the accuracy and completeness, we advise you conduct a careful independent assessment of the property to determine monetary value

FROM EAST LONDON ENERGY TO WEST ESSEX EASE

We Make Moving Home Easy.

At Butler and Stag, we do more than just connect London to West Essex – we make the move seamless. With offices spanning from vibrant East London to the tranquillity of West Essex, we understand the nuances of each area and the journey people take between them. Our marketing goes beyond standard listings, showcasing every property with precision, creativity, and reach that others simply can't match. Coupled with an unparalleled attention to detail, from first enquiry to final move-in, we ensure every client and customer feels informed, supported, and confident. Simply put, we do the little things that make a big difference, setting us apart in every step of the property experience.



LONDON STRATFORD SOUTH WOODFORD BUCKHURST HILL LOUGHTON EPPING BEYOND

Like what you see? Let's talk

Book your **FREE** valuation now



020 8102 1236

london@butlerandstag.com

508 Roman Road, Bow, London, E3 5LU

butlerandstag.uk

IMPORTANT NOTICE - These particulars have been prepared in good faith and they are not intended to constitute part of an offer or contract. We have not performed a structural survey on this property and the services, appliances and specific fittings have not been tested. All photographs, measurements, floor plans and distances referred to are given as a guide and should not be relied upon.

BUTLER & STAG

