



439 Sandygate Road, Sandygate, Sheffield, S10 5UD



# 439 Sandygate Road

## Sandygate

Guide Price

# £425,000

GUIDE PRICE: £425,000-£450,000

Situated on the highly regarded Sandygate Road, this charming two-bedroom stone-built cottage offers an excellent opportunity to acquire a characterful home in a sought-after location. Enjoying an elevated position, the property benefits from far-reaching views across the surrounding landscape, while remaining conveniently close to local amenities, well-regarded schools, and transport links.

The accommodation is arranged over three floors and includes a welcoming dining room, a well-proportioned kitchen, and two reception rooms, providing flexible living space suited to a range of needs. Upstairs, there are two good-sized bedrooms and a family bathroom, all enjoying pleasant views and an abundance of natural light.

Externally, the property features a rear garden, offering a lovely space to relax and take in the impressive outlook.

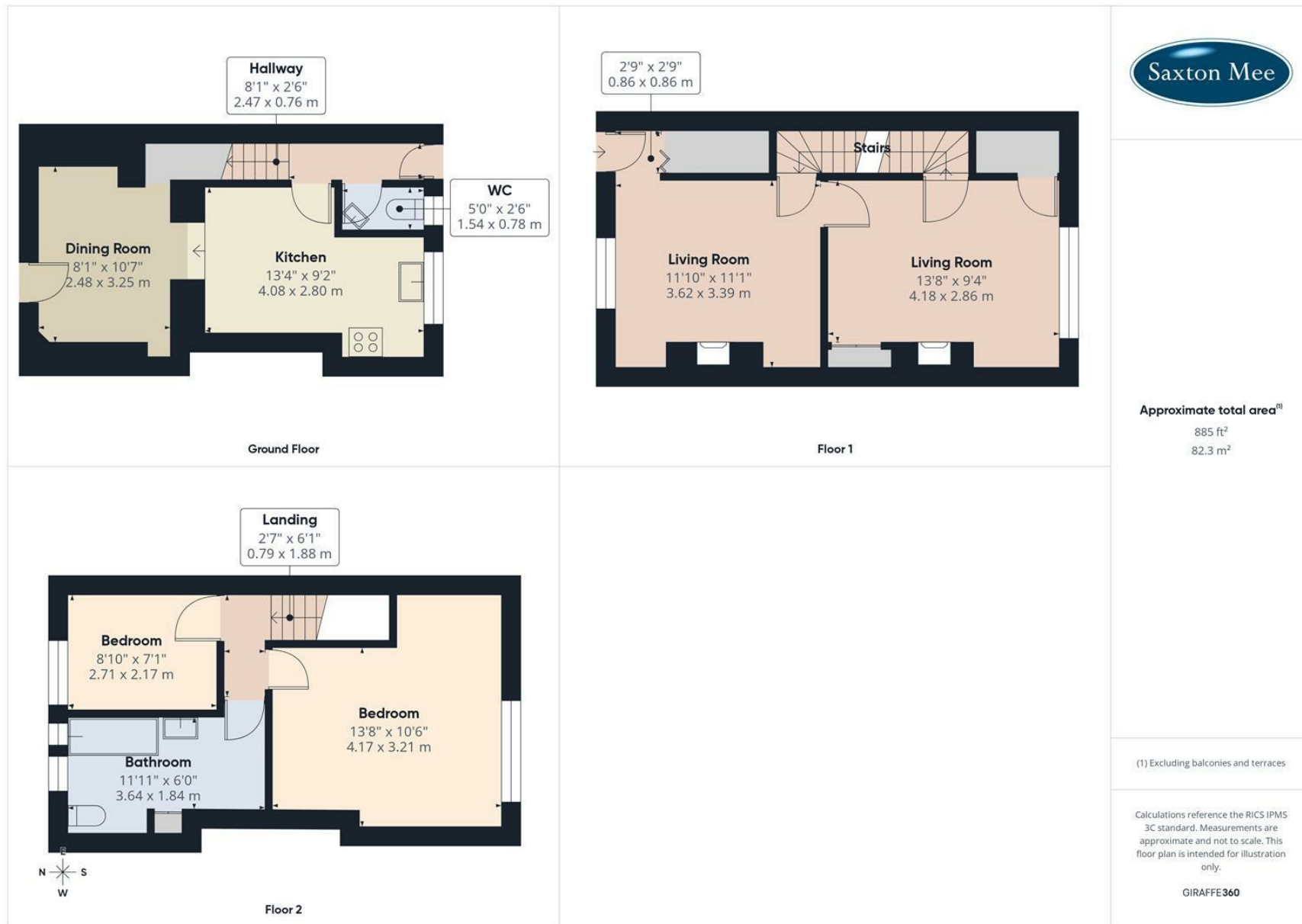
With its attractive setting, period charm, and clear potential, this property presents a great opportunity for buyers looking to create a home tailored to their own tastes in one of Sheffield's most desirable areas.

Viewing is recommended to fully appreciate the location, views, and overall appeal.



- Two-bedroom stone-built cottage
- Sought-after Sandygate Road location
- Elevated position with far-reaching views
- Accommodation over three floors
- Two reception rooms offering flexible living space
- Two good-sized bedrooms and family bathroom
- Close to local amenities, schools, and transport links
- Full of character with excellent potential





While we endeavour to make our sales particulars fair, accurate and reliable, they are only a general guide to the property and, accordingly, if there is any point, which is of particular importance to you, please contact the relevant office. The Agents have not tested any apparatus, equipment, fittings or services and so cannot verify they are in working order. The buyer is advised to obtain verification. Please note all the measurement details are approximate and should not be relied upon as exact. All plans, floor plans and maps are for guidance purposes only and are not to scale. Under no circumstances should they be relied upon as exact or for use in planning carpets and other such fixtures, fittings or furnishings. YOUR HOME IS AT RISK IF YOU DO NOT KEEP UP REPAYMENTS ON A MORTGAGE OR OTHER LOAN SECURED ON IT. 'A Life Assurance policy may be requested.' 'Written Quotations of credit terms available on request.'

Banner Cross  
T: 0114 268 3241  
E: [bannercross@saxtonmee.co.uk](mailto:bannercross@saxtonmee.co.uk)  
[www.saxtonmee.co.uk](http://www.saxtonmee.co.uk)

Hathersage  
T: 01433 650009  
E: [hathersage@saxtonmee.co.uk](mailto:hathersage@saxtonmee.co.uk)

Bakewell  
T: 01629 815307  
E: [bakewell@saxtonmee.co.uk](mailto:bakewell@saxtonmee.co.uk)

Matlock  
T: 01629 828250  
E: [matlock@saxtonmee.co.uk](mailto:matlock@saxtonmee.co.uk)

