



Brussels Close, Dereham, NR19

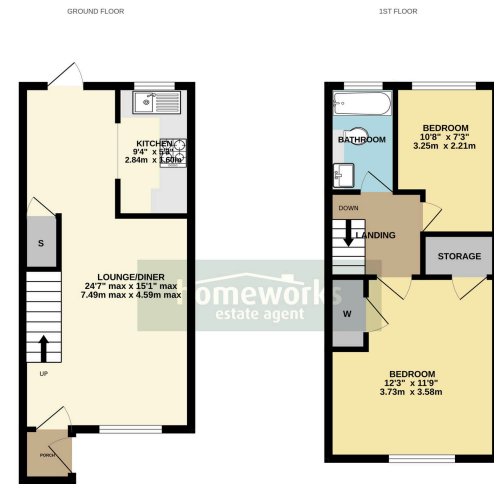
£170,000

2 1 1



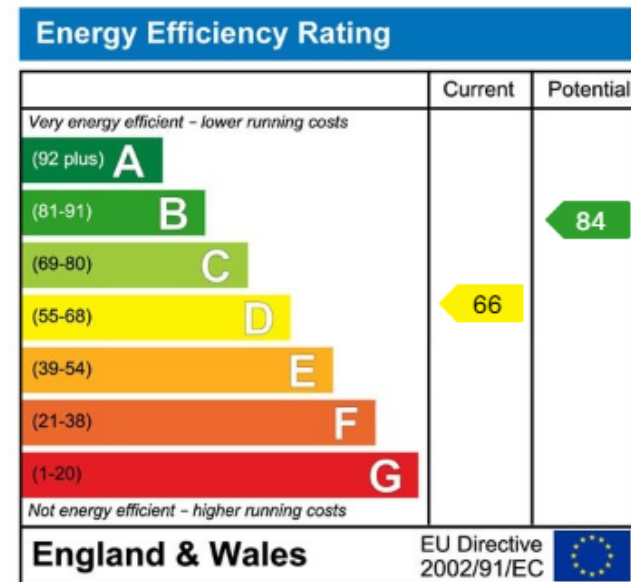
- IMMACULATE MID-TERRACE • TWO BEDROOMS HOME
- NEW BOILER INSTALLED SEPTEMBER 2025
- KITCHEN
- ENCLOSED REAR GARDEN
- IDEAL FIRST TIME BUY OR INVESTMENT
- LOUNGE/DINER
- FAMILY BATHROOM OFF-LANDING
- ALLOCATED PARKING TO REAR
- ** GUIDE PRICE £170,000 - £175,000 **





We warrant that every effort has been made to ensure the accuracy of the floorplan contained herein. Measurements are taken from the internal face of the walls. The floorplan is not intended to be used as a legal document. The floorplan is not intended to be used as a legal document. The floorplan is not intended to be used as a legal document.

**** IDEAL FIRST TIME BUY OR INVESTMENT ** BE QUICK TO ARRANGE YOUR VIEWING ON THIS IMMACULATE TWO BEDROOM PROPERTY IN THE POPULAR AREA OF TOFTWOOD. WITH LOUNGE/DINER | KITCHEN | FAMILY BATHROOM OFF-LANDING | NEW BOILER INSTALLED SEPTEMBER 2025 | ENCLOSED REAR GARDEN | ALLOCATED PARKING TO REAR | VENDORS HAVE FOUND! ** GUIDE PRICE £170,000 - £175,000 ****



C AMOS MNAEA Managing Director
VAT no. 185 328 683

