

RESIDENTIAL SALES
LETTINGS & PROPERTY
MANAGEMENT

COWLING
& PAYNE



Holly House, Brentwood
£1,325 PCM

CPO9432 ONLINE ENQUIRES ONLY SITUATED IN CENTRAL BRENTWOOD, IS THIS SPACIOUS, TWO BEDROOM GROUND FLOOR APARTMENT.

THE PROPERTY IS ADVANTAGEOUSLY & CONVENIENTLY SITUATED WITHIN A SHORT WALK INTO BRENTWOOD HIGH ST.

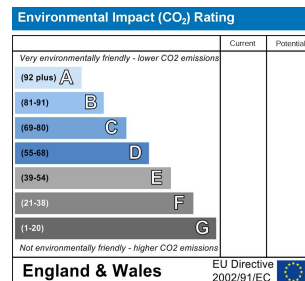
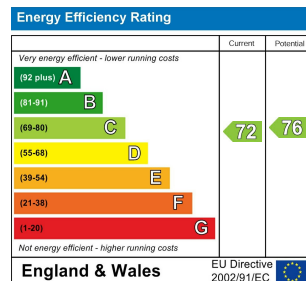
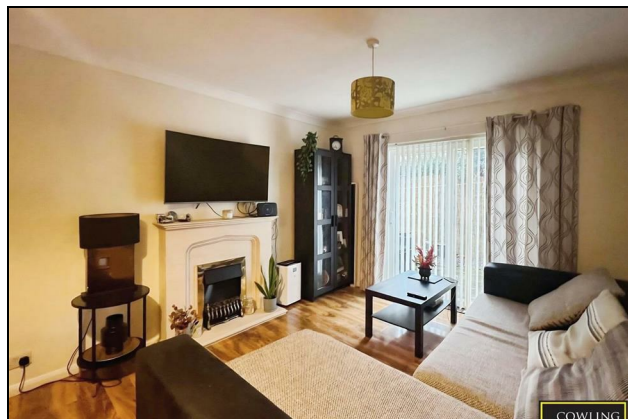
UNUSUALLY, THE PROPERTY BENEFITS FROM ITS OWN PRIVATE PATIO, IDEAL FOR RELAXING IN SUMMER MONTHS.

THIS PROPERTY IS SITUATED WITHIN THIS WELL-REGARDED BLOCK, WHICH HAS RESIDENTS PARKING AND WELL-KEPT COMMUNAL GROUNDS, THE APARTMENT ALSO HAS THE BENEFIT OF A SINGLE GARAGE

COUNCIL TAX BAND D

EPC RATING C

AVAILABLE EARLY MARCH 2026



RESIDENTIAL SALES
LETTINGS & PROPERTY
MANAGEMENT

COWLING
& PAYNE

You may download, store and use the material for your own personal use and research. You may not republish, retransmit, redistribute or otherwise make the material available to any party or make the same available on any website, online service or bulletin board of your own or of any other party or make the same available in hard copy or in any other media without the website owner's express prior written consent. The website owner's copyright must remain on all reproductions of material taken from this website.

2-4 Runwell Road, Wickford, Essex, SS11 7AB
Telephone: 01268 730707 | Fax: 01268 730737
info@cowlingandpayne.co.uk
www.cowlingandpayne.co.uk

