



Waterside

Longford, Coventry, CV6 6QW

Offers over £170,000

Evans Estates is delighted to present this charming two-bedroom mid-terrace house, ideally located in the picturesque Hawkesbury Village area of Coventry. Offered with no upward chain, this property is perfect for first-time buyers or those looking to downsize.

Upon entering, you are welcomed by a spacious entrance hall that leads into an inviting open-plan lounge, providing a warm and comfortable space for relaxation and entertaining. The refitted kitchen diner is a highlight of the home, offering a modern and functional area for cooking and dining, making it the heart of the house.

On the first floor, you will find two well-proportioned bedrooms, each offering ample natural light and space for furnishings. The bathroom is conveniently located nearby, ensuring ease of access for all residents.

Externally, the property boasts a lovely rear enclosed garden, perfect for enjoying the outdoors, whether for gardening or simply unwinding after a long day. Additionally, there are two allocated parking spaces, a valuable feature in this sought-after area.

The home benefits from double glazing and gas central heating, ensuring comfort throughout the seasons. This delightful property is not only a wonderful place to live but also a fantastic opportunity to become part of a vibrant community. We invite you to view this lovely home and discover all it has to offer.

Viewing

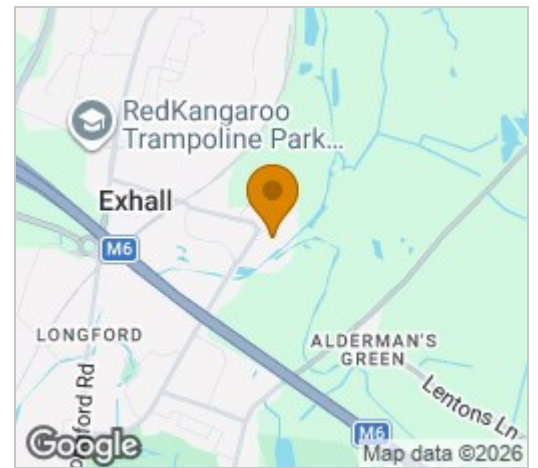
Please contact our Evans Estates Office on 02476333363 if you wish to arrange a viewing appointment for this property or require further information.

- No Upward Chain
- Two Bedrooms
- Ideal First Time Buy
- Two Allocated Parking Spaces

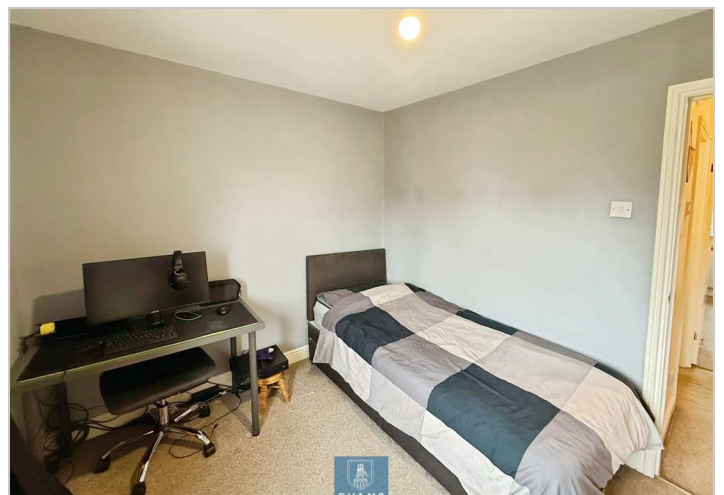
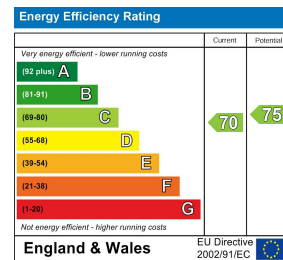


Floor Plan

Area Map



Energy Efficiency Graph



These particulars, whilst believed to be accurate are set out as a general outline only for guidance and do not constitute any part of an offer or contract. Intending purchasers should not rely on them as statements of representation of fact, but must satisfy themselves by inspection or otherwise as to their accuracy. No person in this firm's employment has the authority to make or give any representation or warranty in respect of the property.

47 Headington Avenue, Coventry, West Midlands, CV6 2GX
Tel: 02476333363 Email: info@evans-estates.co.uk <https://www.evans-estates.co.uk>