



41c Church Street, Cropwell Bishop, Nottingham, NG12 3BY

Asking Price £170,000

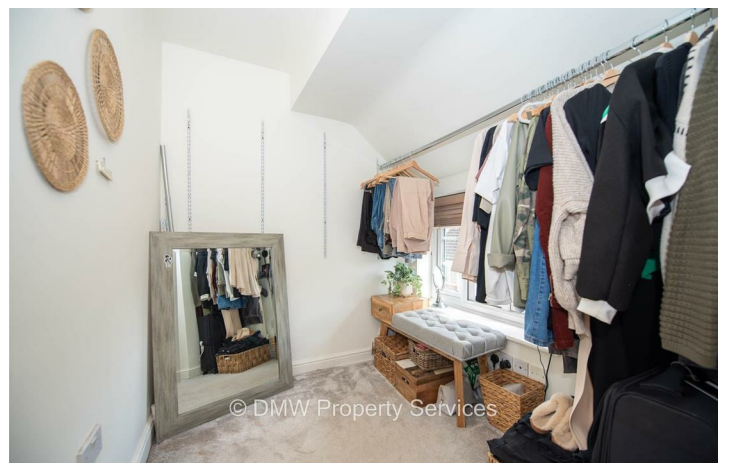
- Two Bedroom Character Cottage
- One Double and One Single Bedroom
- No Upward Chain
- Fenced Front Garden
- GUIDE PRICE £170,000 - £185,000
- Open Plan Lounge/Kitchen/Diner
- Gas Central Heating
- First Floor Bathroom
- Allocated Parking Space

41c Church Street, Nottingham NG12 3BY

GUIDE PRICE £170,000 - £185,000 - Beautifully Presented Two Bedroom Cottage. Situated in sought after village location. Accommodation comprises; Open Plan Lounge/Kitchen/Diner, One Double and One Single Bedroom. First Floor Bathroom. Gas Heating. One Allocated Parking Space. No Upward Chain.



Council Tax Band: B



Entrance Hall

Stairs to the first floor. Door to the Lounge/Kitchen/Diner.

Lounge/Kitchen/Diner

18'11 x 11'8

Windows to the front elevation. A range of base and wall units to the kitchen.

Master Bedroom

11'5 x 8'5

Window to the front elevation.

Bedroom Two

10'5 x 6'2

Window to the front elevation.

Bathroom

Sink unit. Low level flush toilet. Panelled bath with shower over. Roof window.

Exterior

Fenced garden to the front elevation. One allocated parking space.







Viewings

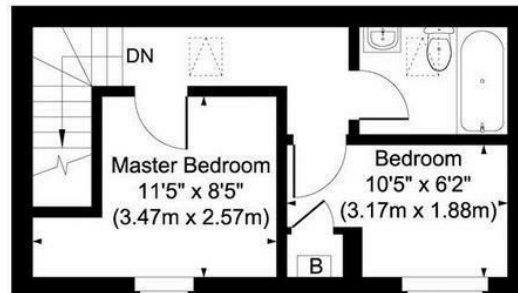
Viewings by arrangement only. Call 01159625003 to make an appointment.

EPC Rating:

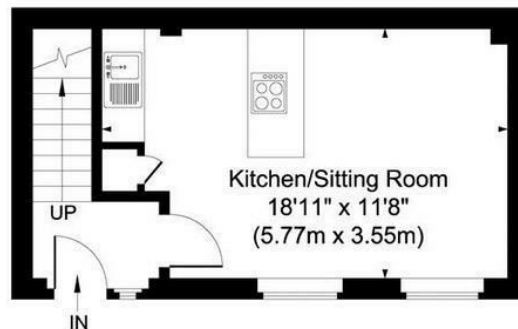
D

Energy Efficiency Rating		Current	Potential
Very energy efficient - lower running costs			
(92 plus) A			
(81-91) B			89
(69-80) C			
(55-68) D		66	
(39-54) E			
(21-38) F			
(1-20) G			
Not energy efficient - higher running costs			
England & Wales		EU Directive 2002/91/EC	

41c Church Street, Cropwell Bishop
Approximate Gross Internal Area 48 sq.m/517 sq.ft



First Floor



Ground Floor

Illustration for identification purposes only, measurements are approximate, not to scale.