

Lot 21

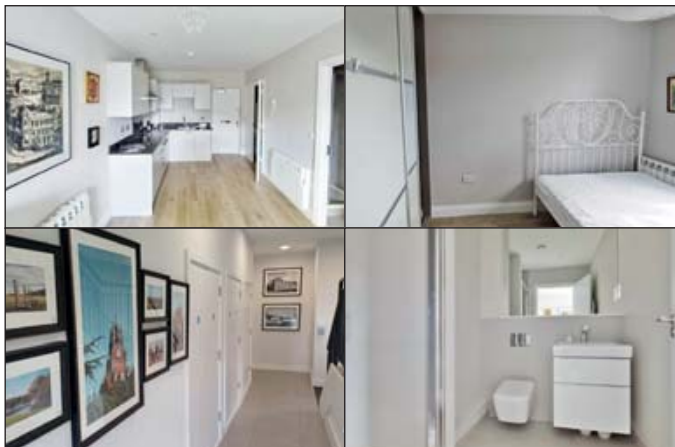


Flat 9, One, High Street,  
Egham, Surrey, TW20 9HH

Upon  
instruction of 



All enquiries Ref: Emma Hughes



## ■ Leasehold first floor flat

### Location:

The property is located on Egham High Street. Shopping amenities can be found locally within Egham Town Centre. Public transport links are available at Egham Train Station to the south west and Staines Train Station to the east along with a network of local bus services serving the surrounding areas. The property is served by road links including the M25 to the east and A30 to the north. Recreational pursuits can be found at Runnymede National Trust Park to the north west.

### Accommodation:

One bedroom, reception room open plan to kitchen, shower room/wc

### EPC Rating: D

### Council Tax Band: C

### Lease:

Held on a lease for a term of 125 years from 01/07/2018.

### To view:

Strictly by arrangement with the auctioneers.