



## FELLOWS ROAD LONDON, NW3

£2,500 PER MONTH

Spacious 3-Bedroom Flat in Prime NW3

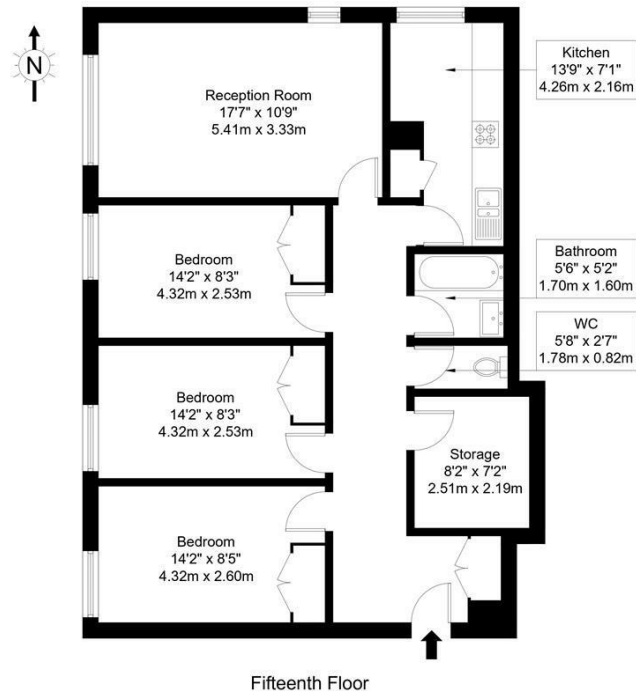
PMP International are proud to offer this well-proportioned three-bedroom flat located in the heart of NW3. Situated on a desirable street, this property offers a generous layout comprising three good-sized bedrooms, a bright and spacious reception room, a separate fully fitted kitchen, one bathroom, and an additional guest WC.

Ideally positioned close to the excellent transport links, green spaces, and amenities of Hampstead, Belsize Park, and Swiss Cottage, this flat is a rare find in one of London's most sought-after postcodes.

**PMP** | INTERNATIONAL

## Fellows Road, NW3 3JP

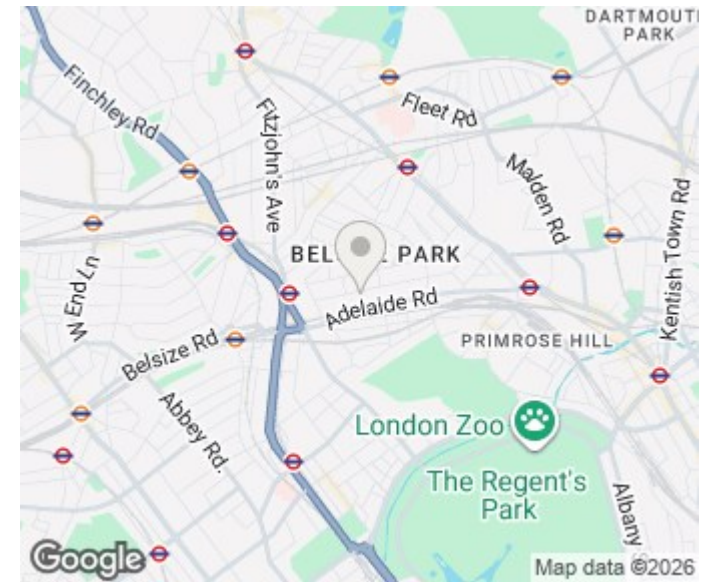
Approx Gross Internal Area = 89.74 sq m / 965 sq ft



Ref :

Copyright **BLEU PLAN**

The Floor plan is not to scale and measurements and areas shown are approximate and therefore should be used for illustrative purposes only. The plan has been prepared in accordance with the RICS code of Measuring Practice and whilst we have confidence in the information produced it must not be relied on. Maximum lengths and widths are represented on the floor plan. If there is any aspect of particular importance, you should carry out or commission your own inspection of the property.  
Copyright © BleuPlan



Energy Efficiency Rating		
	Current	Potential
Very energy efficient - lower running costs		
(92 plus) <b>A</b>		
(81-91) <b>B</b>		
(69-80) <b>C</b>	73	75
(55-68) <b>D</b>		
(39-54) <b>E</b>		
(21-38) <b>F</b>		
(1-20) <b>G</b>		
Not energy efficient - higher running costs		
<b>England &amp; Wales</b>	EU Directive 2002/91/EC	

Agents Note: Whilst every care has been taken to prepare these particulars, they are for guidance purposes only. All measurements are approximate and are for general guidance purposes only and whilst every care has been taken to ensure their accuracy, they should not be relied upon and potential buyers/tenants are advised to recheck the measurements

London  
PMP International  
94 Belsize Lane  
Belsize Park  
London  
NW3 5BE

020 7701 2878  
info@pmpi.co.uk  
www.pmpi.co.uk

**PMP** | INTERNATIONAL