



Broom Close, TW11

£499,950

This stunning split level apartment is located in a private, quiet development with three acres of Riverside gardens. There is no onward chain, and it offers two double bedrooms and a garage.

Broom Close is located on Broom Road. Within in easy reach of Hampton Wick mainline station, Teddington Station, High Street, Kingston Town centre and Royal Bushy Park.

Features

- Private Garage
- Split Level
- Two Bedrooms
- South Facing Balcony
- Three Acres Gardens
- Riverside



Broom Close, TW11

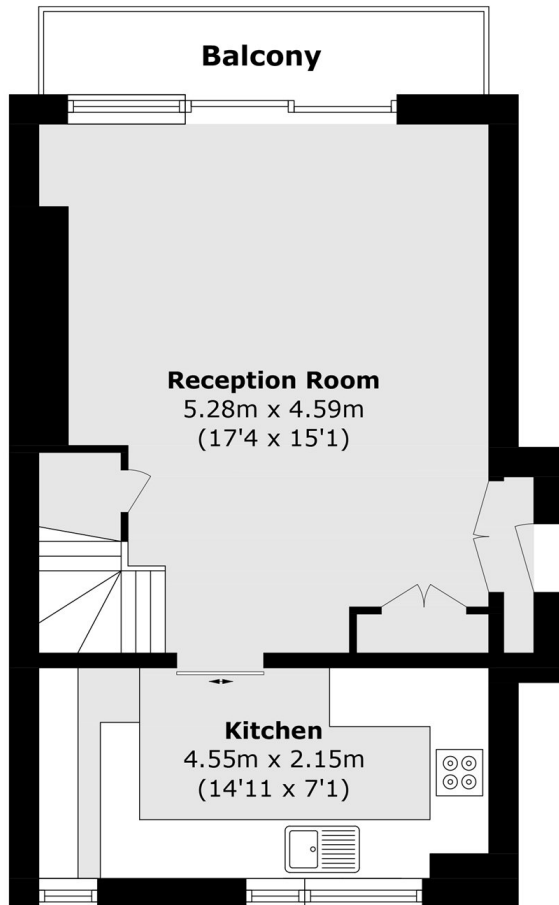
The entrance hallway is spacious with plenty of storage and leads to all rooms. The 14ft reception room is light and ideal for relaxing and dining, there are floor to ceiling sliding doors leading onto a private south facing balcony.

The kitchen provides access to a terrace and fire escape leading to the communal gardens. Both of the bedrooms are generous double rooms which both offer fitted storage. Completing the accommodation there is a modern bathroom.

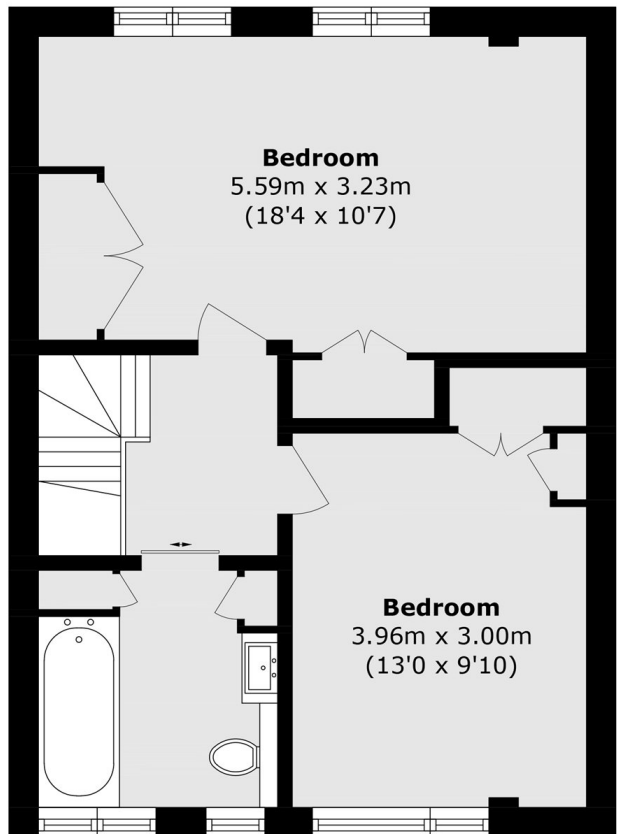
This development has a shortcut to Hampton Wick station and this development offers stunning communal gardens with plenty of residents parking.



Broom Close, Teddington, TW11



Third Floor



Fourth Floor

Total area (approx.): 80.1 sq. m (862.1 sq. ft)

Balcony area (approx.): 4.1 sq. m (44.1 sq. ft)