



11 New Forest Lodge Retreat, Shorefield Country Park

£90,000

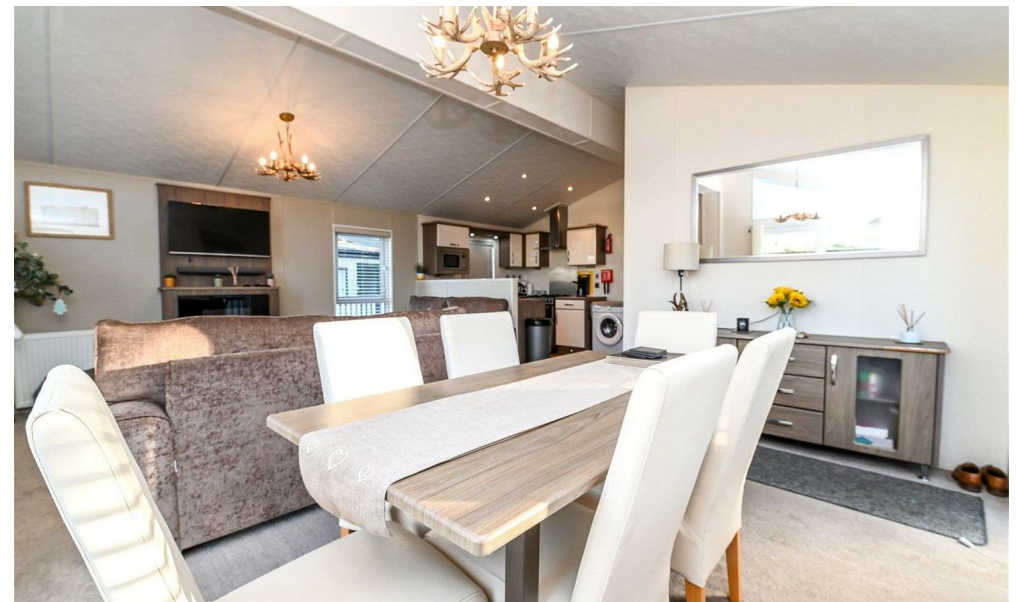
Mitchells
1963 — TODAY



*11 New Forest Lodge Retreat
Shorefield Country Park
Downton
Hampshire
SO41 0LH*

A beautifully presented three bedroom holiday home situated in a unique gated development forming part of Shorefield Country Park. Features of the property include a large open plan living space, family bathroom, three good sized bedrooms with bedroom one benefitting from an en suite WC, spacious area of decking and allocated parking.

- 2018 Delta Superior 37x20
- 2026 Site Fees: £8,070.13
- 2026 Rates: £1,607.36
- License Until 30/11/2049
- Second Home Only, Cannot Be Main Residence
- Open Plan Living Area
- Three Bedrooms
- Family Bathroom
- En-Suite WC
- South West Facing Decking



The Property

Entrance into the sitting/dining room with a bright triple aspect, sliding doors onto the decking, carpeted flooring, six seater dining table and chairs and feature electric fireplace.

Kitchen with cream gloss wall and base units with contrasting worktop, wood effect flooring, integrated eye level microwave, under counter fridge and freezer, four burner gas home and oven and slimline dishwasher, cupboard housing the gas fired central heating boiler.

Family bathroom with tile effect flooring, extractor fan, UPVC double glazed window and suite comprising panel bath with mixer tap over and shower attachment, glass shower screen, wash hand basin with mixer tap over and storage beneath, wall hung mirror fronted storage cupboard and WC.

Bedroom one is a particularly good size with fitted bedside cabinets, mirror fronted wardrobes, outlook to the rear, dressing table with mirror above and door leading to the dressing area and en suite WC with suite comprising WC, wash hand basin with mixer tap over and storage beneath, mirror fronted cabinet and ladder style heated towel rail.

Bedroom two and three are both laid out as twin bedrooms with built in wardrobes.





Gardens & Grounds

New Forest Lodge Retreat is a private gated development of only 12 lodges situated a short walk to the facilities at Shorefield Country Park.

To the front and right hand side of the lodge is a large area of decking providing a fantastic space for outside entertaining. Adjoining the lodge is an allocated parking space.



Site Fees & Charges

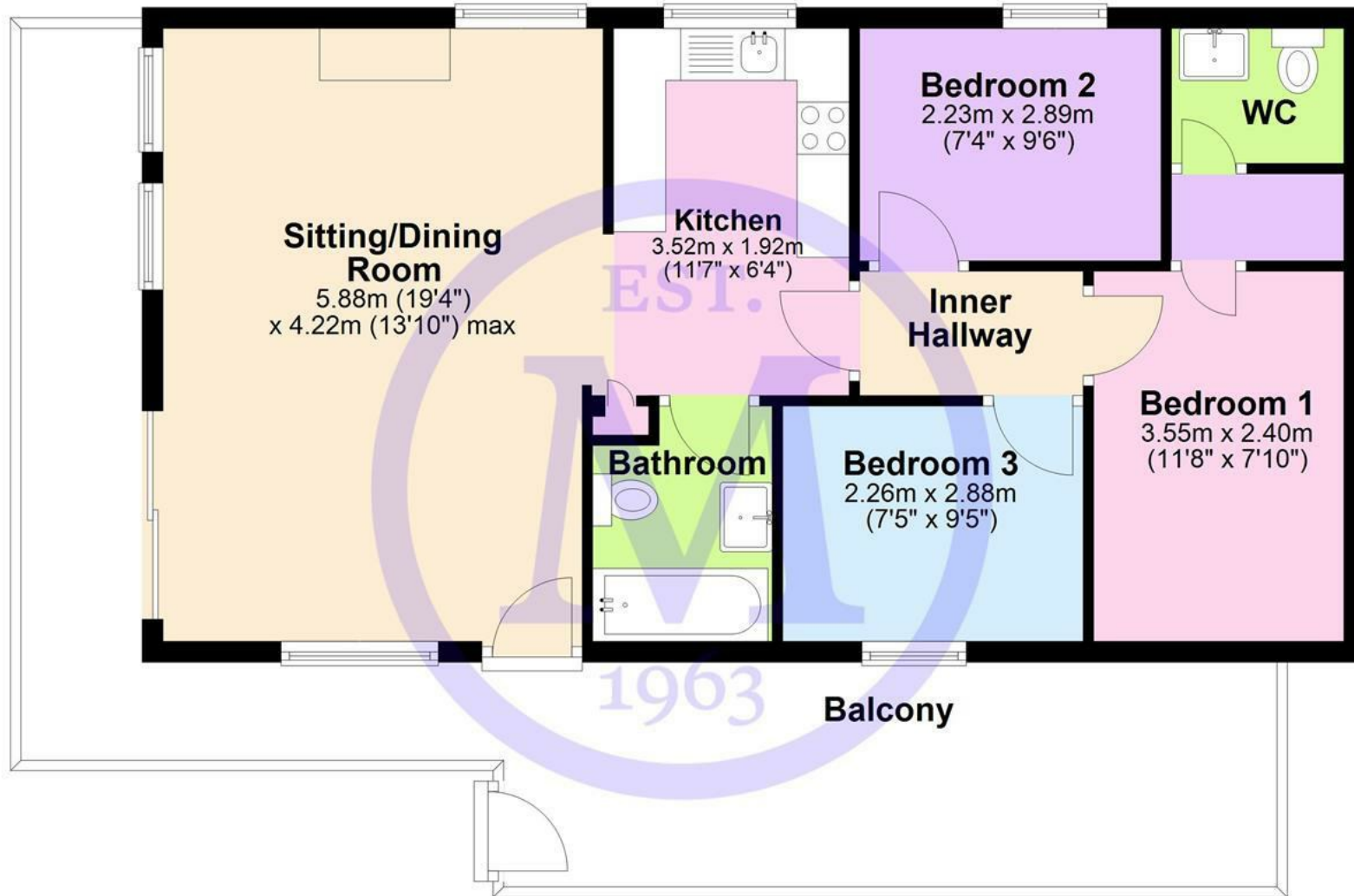
2026 Site Fees: £8,070.13

2026 Rates: £1,607.36

License Until 30/11/2049

Floor Plan

Approx. 66.1 sq. metres (711.9 sq. feet)



Total area: approx. 66.1 sq. metres (711.9 sq. feet)

'Whilst every attempt has been made to ensure the accuracy of this floor plan, the measurements of doors, windows, rooms and any other items are approximate and no responsibility is taken for any error, omission or mis-statement. This plan is for illustrative purposes only and should be used as such by any prospective purchaser.'

Plan produced using PlanUp.

Situation

Located on the southern edge of the New Forest National Park and just a short stroll from the shingle beaches of Milford on Sea, the award-winning Shorefield Country Park offers an idyllic spot for the ultimate getaway. The park boasts a wide range of excellent facilities, including heated indoor and outdoor pools, a gym and day spa, bars, a restaurant, a fishing lake, pet-friendly areas, play areas, tennis courts, and live family entertainment.

At Shorefield Country Park, site fees run from November to October, while the rates are charged from April to March. These fees can be paid either over six or twelve months. Gas and electricity are metered, with bills issued in May and November. The park is open from 10th February to 5th January, providing a fantastic year-round retreat.





Mitchells.uk.com
info@mitchells.uk.com
01425 616411

Centenary Buildings
8-10 Old Milton Road
New Milton
Hampshire
BH25 6DT

Mitchells
1963 — TODAY

