



Greencroft Gardens, NW6
£1,850,000



Greencroft Gardens, NW6

An exceptional five bedroom garden flat with additional terrace set within an elegant Victorian converted house and spread over two floors. The property benefits from a share of freehold and it will be sold with no onward chain.

The lower ground floor delivers impressive space and style, with two generous double bedrooms positioned to the front, each with Ensuite bathrooms (one complemented by built-in wardrobes). A guest W/C is also located on this floor. To the rear, a stunning open-plan kitchen and reception room creates the perfect entertaining space, with doors flowing seamlessly onto a beautifully sized lawned garden. At the end of the garden, a substantial summer house complete with electrics, kitchen, and shower room provides exceptional versatility ideal as a studio, home office, or luxurious guest retreat. Upstairs on the raised ground floor, this level also offers a family bathroom and three further double bedrooms, including an impressive principal suite with its own Ensuite and direct access to a private terrace. Perfect for morning coffee or evening unwinding.

Greencroft Gardens is situated within the South Hampstead Conservation Area. Finchley Road underground station and West Hampstead train stations, as well as the local amenities of West End Lane are within easy reach.

Features

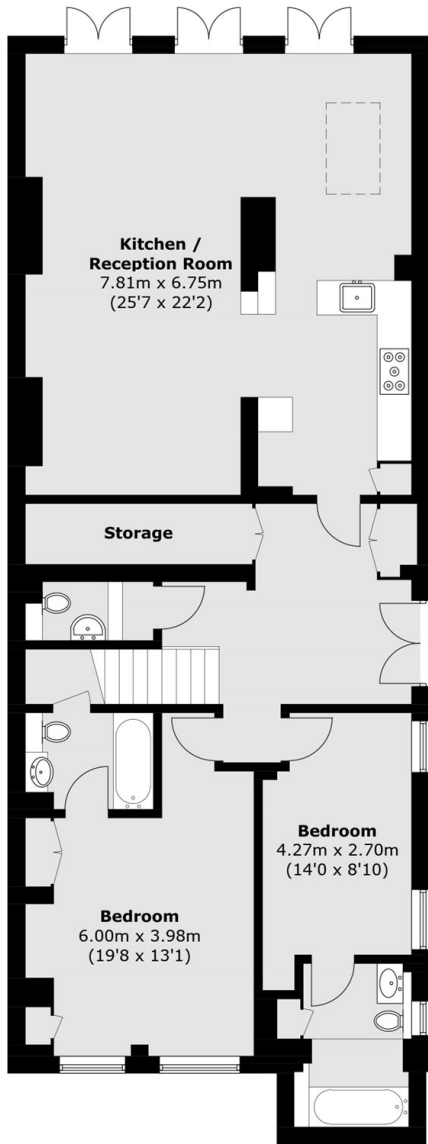
- Five Bedrooms
- Private Garden
- Five Bathrooms
- Summer House
- Share Of Freehold
- No Onward Chain



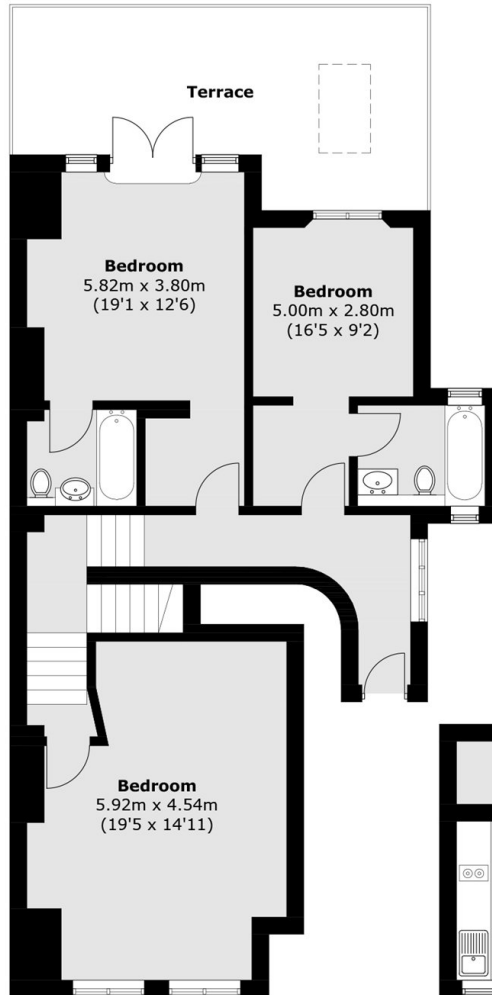




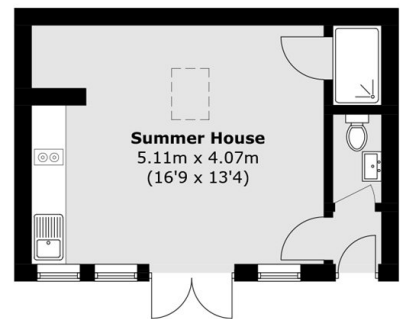
Greencroft Gardens, London, NW6



Ground Floor



First Floor



(Not Shown In Actual Location / Orientation)

Total area (approx.): 199.9 sq. m (2,151.7 sq. ft)
Summer House area (approx.): 25.8 sq. m (277.7 sq. ft)
Terrace area (approx.): 21.5 sq. m (231.4 sq. ft)