



18 Mappleton Drive, Mansfield, NG18 3RF

Asking Price £145,000

- Spacious Three Bedroom End Townhouse
- Large Lounge/Diner
- Downstairs W.C
- Modern Bathroom
- Parking to the Front and Side
- Large Accommodation Throughout
- Breakfast Kitchen
- Built in Stores
- Front and Rear Gardens
- No Upward Chain



# 18 Mappleton Drive, NG18 3RF

Spacious Three Bedroom End Townhouse. Accommodation comprises, Large Lounge/Diner, Breakfast Kitchen, Downstairs W.C, Three Double Bedrooms and modern Bathroom. Built in Stores. Gas Heating. Gardens to the Front and Rear. Parking to the front and side elevations. No Upward Chain.



Council Tax Band:



Entrance Hall

W.C

2'9 x 5'5

Low level flush toilet. Window to the front. Sink unit.

Lounge/Diner

21'10 x 10'1

Laminate wood effect flooring. Window and sliding patio doors to the rear. Two radiators.

Breakfast Kitchen

11'2 x 7'6

A range of base and wall units with integrated electric oven. Space for a washing machine. Work surfaces with inset sink unit and electric hob. Window to the front elevation.

First Floor Landing

Master Bedroom

12'5 x 10'3

Built in wardrobes. Wood effect flooring. Window to the rear.

Bedroom

12'10 x 9'1

Wood effect flooring. Window to the rear. Store cupboard housing the gas boiler.

Bedroom

12'11 x 5'1

Window to the front.

Bathroom

Panelled bath with mixer shower over. Sink unit. Toilet. Window to the rear. Radiator.

Exterior

Gardens to the front and rear. Driveway. Access to the two store cupboards.



© DMW Property Services



© DMW Property Services

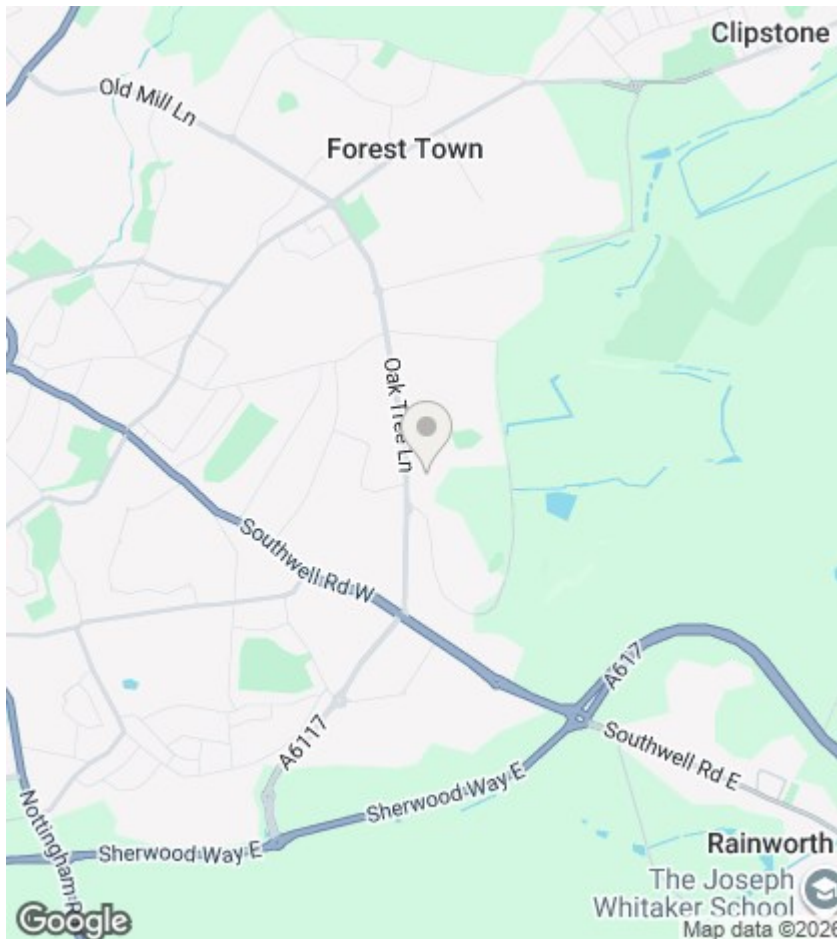


© DMW Property Services









## Viewings

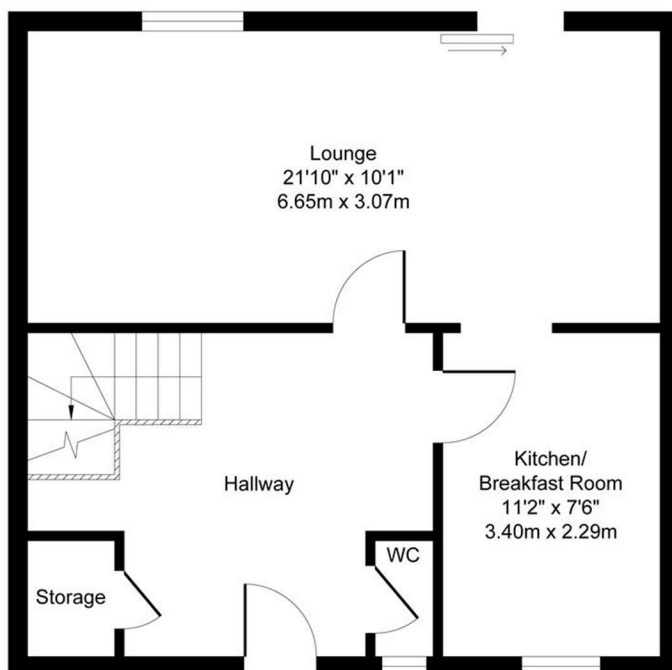
Viewings by arrangement only. Call 01159625003 to make an appointment.

## EPC Rating:

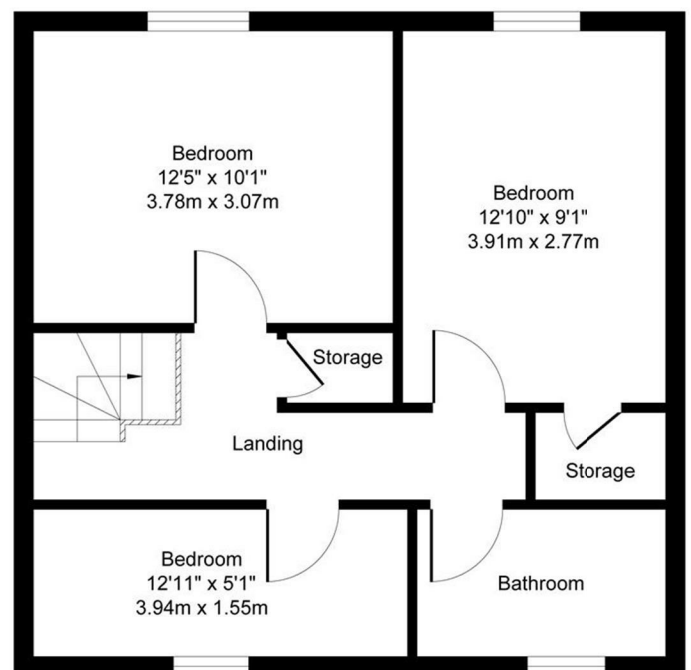
C

Energy Efficiency Rating		
	Current	Potential
Very energy efficient - lower running costs		
(92 plus) <b>A</b>		
(81-91) <b>B</b>		85
(69-80) <b>C</b>	73	
(55-68) <b>D</b>		
(39-54) <b>E</b>		
(21-38) <b>F</b>		
(1-20) <b>G</b>		
Not energy efficient - higher running costs		
England & Wales	EU Directive 2002/91/EC	

Approximate Gross Internal Floor Area  
942 Sq.ft. (87.51 sq.m.)



GROUND FLOOR



FIRST FLOOR