



Yale

25

Richmond Avenue, Feltham, TW14

Guide Price £549,950

🛏 3 🚿 2 🚗 2



Presented in excellent condition throughout, this attractive three-bedroom end-of-terrace family home offers spacious and versatile accommodation.

The ground floor features underfloor heating throughout and comprises a bright through lounge/dining room, a family bathroom, and an extended open-plan reception area leading into the fitted kitchen. Bedroom Three is also located on the ground floor, offering flexibility for guests, a home office, or additional living space.

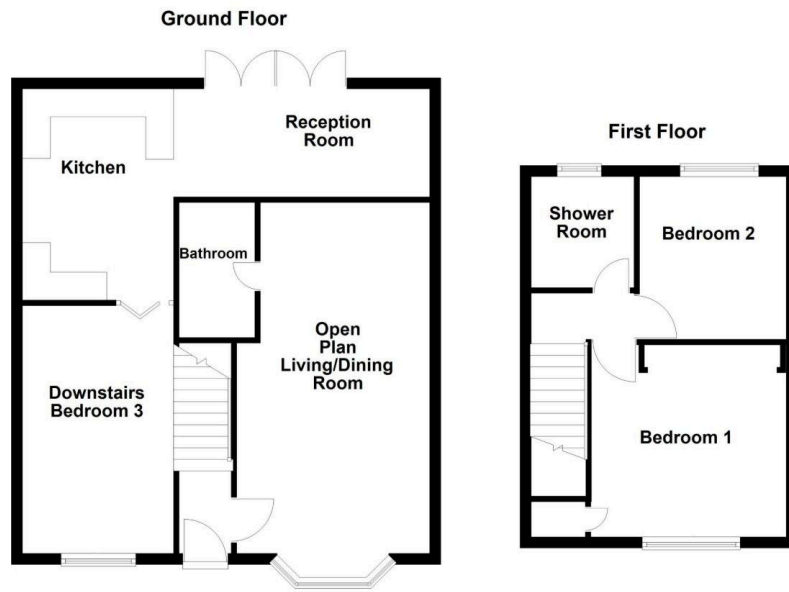
Upstairs, the first-floor landing provides access to two well-proportioned bedrooms, together with a shower room and separate washroom.

Additional benefits include double-glazed windows, underfloor heating to the ground floor, gas central heating to the first floor, and a private, low-maintenance rear garden laid with artificial turf. The property also offers off-street parking for up to two vehicles via a private driveway.

There is potential to further extend the property at first-floor level, subject to the necessary consents, with planning permission having previously been granted.

Council Tax Band: D.





- Three-bedroom end-of-terrace family home
- Presented in excellent condition throughout
- Spacious through lounge and dining area
- Extended open-plan reception room and kitchen
- Ground-floor bedroom offering flexible use
- Family bathroom on the ground floor
- Two double bedrooms on the first floor
- Shower room and separate washroom upstairs
- Underfloor heating to the ground floor
- Private driveway providing parking for two cars

