



4B, Merchant Square,
, W2

£980 Per Week,

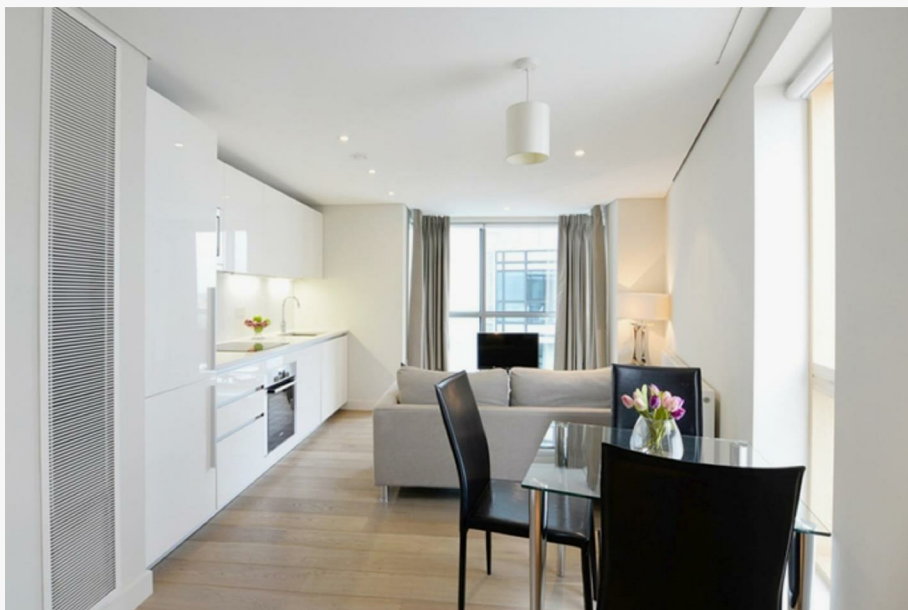
NAPIER WATT

T: 0207 935 0011
E: enquiries@napierwatt.co.uk
W: napierwatt.co.uk

35 Berkeley Square, Mayfair, London, W1J 5BF







Description

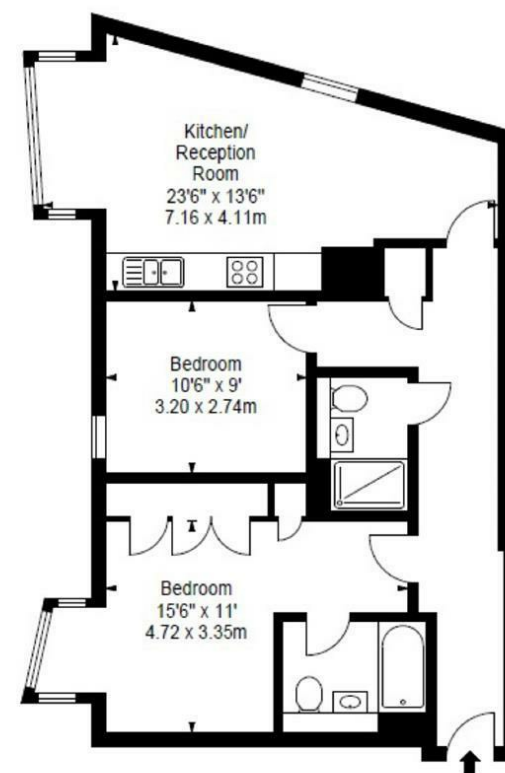
We are pleased to offer this stunning interior designed apartment, set within the heart of the Paddington Basin and close to the popular West End Quay. The apartment is situated on the tenth floor of this prestigious building which features 24 hour concierge, lift service, and secure underground parking.

The stunning apartment comprises spacious living and entertaining space with a beautiful reception room with superb views, a superb modern fitted open plan kitchen, two bedrooms, two bathrooms and ample storage space. The apartment offers easy access to superb transport links such as Paddington Train Station (Bakerloo, Hammersmith & City, Circle, District lines and Heathrow) Edgware Road (Circle, District and Bakerloo lines).

Key Features

Terms

Additional costs will apply for; referencing (£36 per person & guarantor); administration (£240); renewal/extensions (£120); check-out inventory & cleaning (variable); special requests (variable). Security Deposits also apply to all tenancies.



**APARTMENT 1011
MERCHANT SQUARE EAST
W2**

Tenth Floor

Approx Gross Internal Area*
736 Sq Ft - 68.37 Sq M

IMPORTANT: We would inform prospective purchasers that these sales particulars have been prepared as a general guide only. A detailed survey has not been carried out, nor the services, appliances and fittings tested. Room sizes should not be relied upon for furnishing purposes and are approximate. If floor plans are included, they are for guidance only and illustration purposes only and may not be to scale. If there are any important matters likely to affect your decision to buy, please contact us before viewing the property.