



**Connells**

Newton Road  
Bletchley Milton Keynes



### Property Description

Offered to the market with no onward chain and located on the highly desired 'Newton Road' is this spacious well-presented one bedroom top floor apartment. This property is an ideal first time purchase or investment buy, with its location offering easy access to local amenities and transport links such as Bletchley main line train station and the A5 and M1 road links. This property also benefits from an allocated parking space.

Enter from entrance hall. A three-piece suite to include WC, pedestal wash hand basin and a bathtub with an attached shower. Heated towel rail. Recessed spotlights and extractor fan.

### Parking

Allocated parking for one car.

Accommodation comprises entrance hall, lounge/diner, kitchen, double bedroom and a bathroom. Outside there is a well-maintained communal hallway and an allocated parking space.

### Entrance Hall

Enter via a wooden double locked front door. Telecom system. Airing cupboard along with an additional storage cupboard. Electric wall mounted heater.

### Lounge/Diner

15' 4" x 13' 9" ( 4.67m x 4.19m )

Enter from entrance hall. Two wall mounted electric heaters. Two double glazed windows to front aspect.

### Kitchen

8' 4" x 7' 11" ( 2.54m x 2.41m )

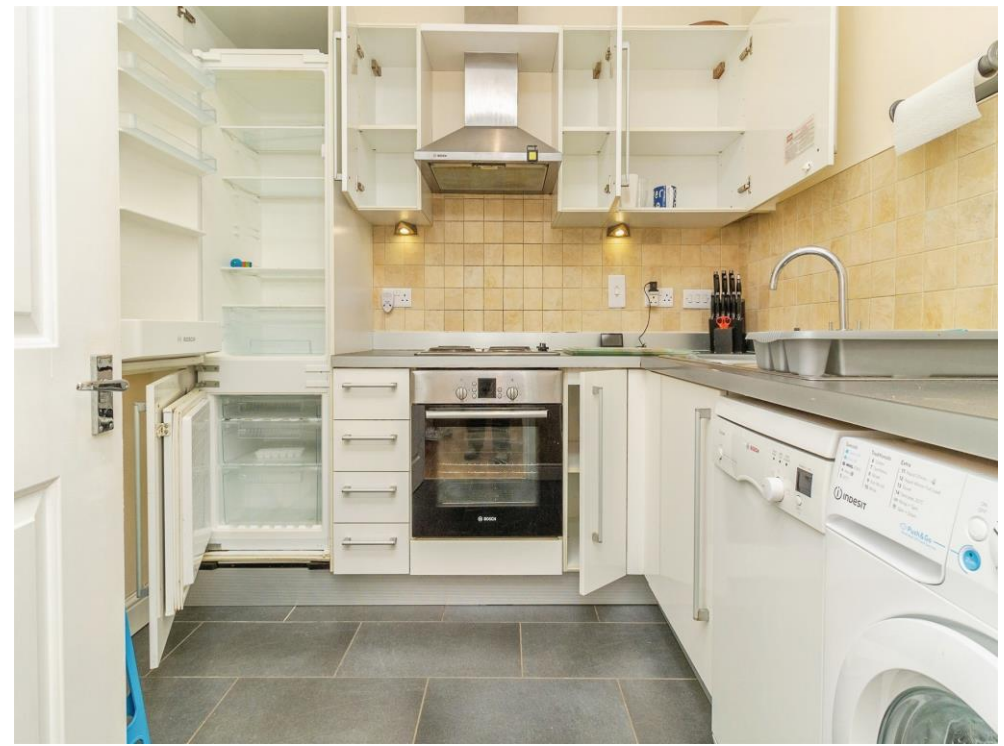
Enter from the entrance hall. A range of wall and base level units. Integrated appliances to include oven, four ring electric hob and fridge freezer. Additional space for washing machine and dishwasher. Stainless steel sink and drainer. Recessed spotlights.

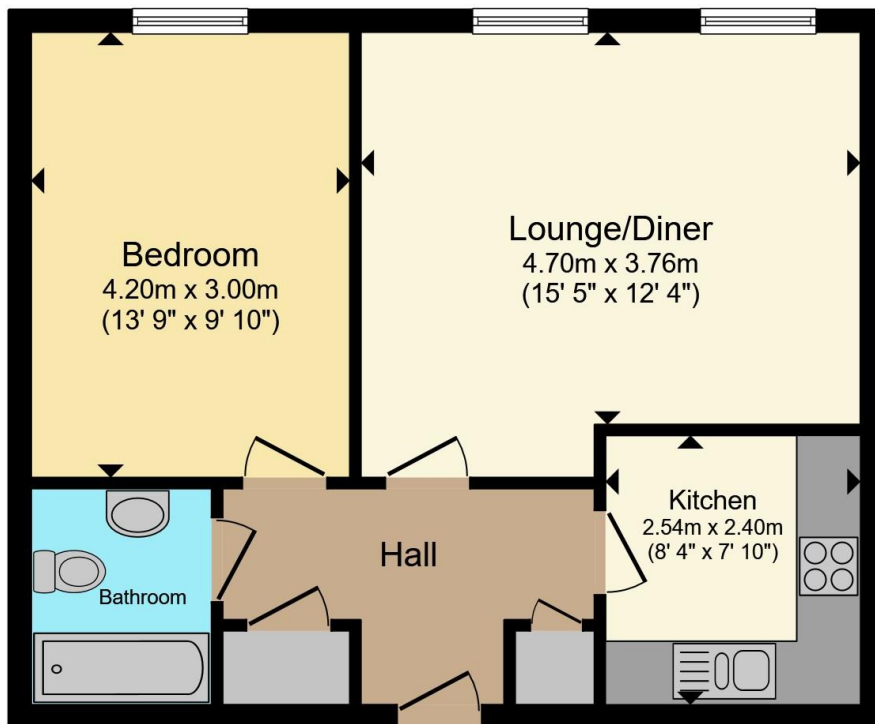
### Bedroom

13' 8" x 9' 10" ( 4.17m x 3.00m )

Enter from entrance hall. UPVC double-glazed window to front aspect. Electric wall mounted heater.

### Bathroom





Total floor area 49.4 m<sup>2</sup> (532 sq.ft.) approx

This floor plan is for illustrative purposes only. It is not drawn to scale. Any measurements, floor areas (including any total floor area), openings and orientation are approximate. No details are guaranteed, they cannot be relied upon for any purpose and they do not form part of any agreement. No liability is taken for any error, omission or misstatement. A party must rely upon its own inspection(s). Powered by [www.propertybox.io](http://www.propertybox.io)



To view this property please contact Connells on

**T 01908 375 241**  
**E [bletchley@connells.co.uk](mailto:bletchley@connells.co.uk)**

188 Queensway Bletchley  
 MILTON KEYNES MK2 2SW

EPC Rating: E Council Tax Band: A

Service Charge: Ask Agent

Ground Rent: Ask Agent

Tenure: Leasehold

**view this property online [connells.co.uk/Property/BLE311917](http://connells.co.uk/Property/BLE311917)**

This is a Leasehold property. We are awaiting further details about the Term of the lease. For further information please contact the branch. Please note additional fees could be incurred for items such as Leasehold packs.



1. MONEY LAUNDERING REGULATIONS Intending purchasers will be asked to produce identification documentation at a later stage and we would ask for your co-operation in order that there will be no delay in agreeing the sale. 2. These particulars do not constitute part or all of an offer or contract. 3. The measurements indicated are supplied for guidance only and as such must be considered incorrect. Potential buyers are advised to recheck measurements before committing to any expense. 4. We have not tested any apparatus, equipment, fixtures, fittings or services and it is in the buyers interest to check the working condition of any appliances.

Connells Residential is registered in England and Wales under company number 1489613, Registered Office is Cumbria House, 16-20 Hockliffe Street, Leighton Buzzard, Bedfordshire, LU7 1GN. VAT Registration Number is 500 2481 05.

**See all our properties at [www.connells.co.uk](http://www.connells.co.uk) | [www.rightmove.co.uk](http://www.rightmove.co.uk) | [www.zoopla.co.uk](http://www.zoopla.co.uk)**

Property Ref: BLE311917 - 0003