



7 Coberley Close, Downhead Park

£620,000 Freehold

Five-bedroom detached self-build home • Located in the highly desirable Coberley Close, Downhead Park • Quiet cul de sac • Ideal family home • Well-proportioned bedrooms throughout



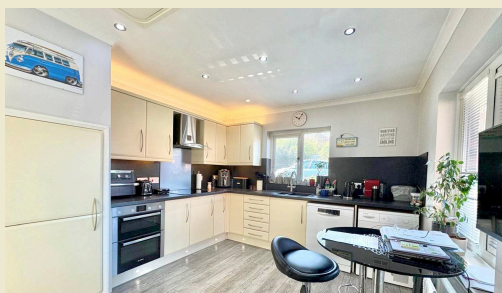
Spacious five-bed detached home in sought-after Downhead Park. Features multiple receptions, refitted kitchen, en-suite, family bathroom, utility, and parking for four cars. Ideal for families.

Council Tax band: E

Tenure: Freehold

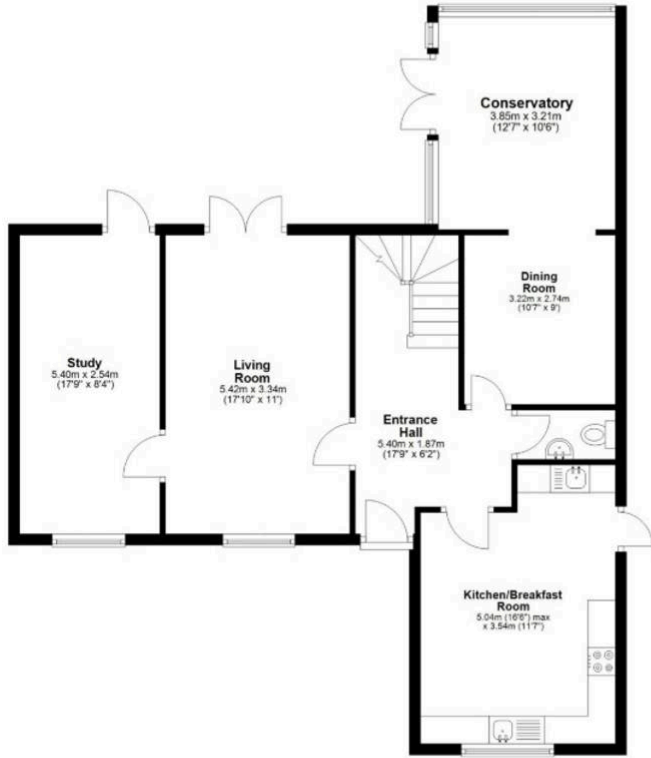


- › Five-bedroom detached self-build home
- › Located in the highly desirable Coberley Close, Downhead Park
- › Quiet cul de sac
- › Ideal family home
- › Well-proportioned bedrooms throughout



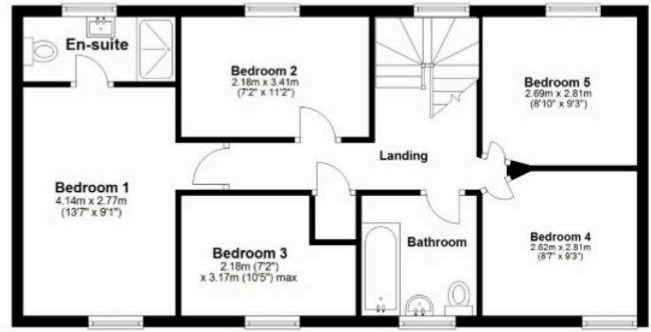
Ground Floor

Approx. 84.5 sq. metres (909.2 sq. feet)



First Floor

Approx. 60.1 sq. metres (646.8 sq. feet)



Total area: approx. 144.6 sq. metres (1556.0 sq. feet)

You can include any text here. The text can be modified upon generating your brochure.

