



## BEETHAM TOWER 111, OLD HALL STREET

LIVERPOOL, L3 9BD

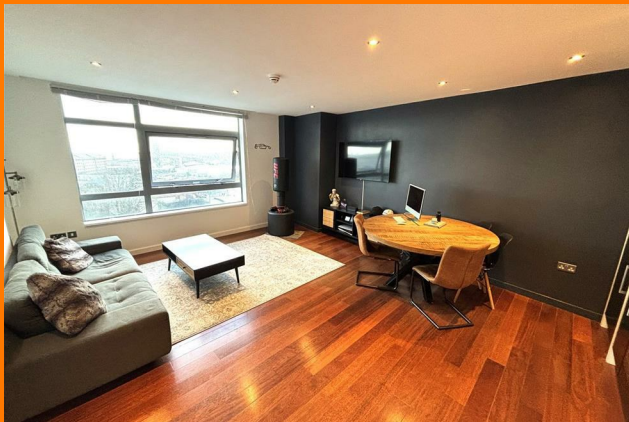
£110,000  
LEASEHOLD

- WELL LOCATED, WELL PRESENTED 6TH FLOOR, ONE BED APARTMENT.
- CONCIERGE, LIFT TO ALL FLOORS, NO CHAIN !!!!!
- MODERN KITCHEN-DINER, INTREGATED APPLICANCES.
- STUNNING VIEWS OF ESTUARY & THE SEA.
- IN HEART OF LIVERPOOL CITY CENTRE, NEAR AMENITIES & TRANSPORT LINKS.



# BEETHAM TOWER 111, OLD

- SUPERBLY LOCATED & WELL PRESENTED ONE BED APARTMENT.
- SITUATED IN THE HEART OF THE CITY CENTRE.
- STUNNING SEA/ESTUARY VIEWS.
- OPEN PLAN LIVING WITH MODERN KITCHEN & INTREGATED APPLIANCES.
- CONCIERGE, LIFT TO ALL FLOORS, INTERCOM.
- MODERN BATHROOM & UTILITY.
- VACANT POSSESSION & NO CHAIN !!!
- NEAR AMENITIES, TRANSPORT LINKS & CITY CENTRE.
- IDEAL FTB OR INV AS OF LOCATION & PRICE. LEASEHOLD.
- CALL MISTORIA ESTATE AGENTS TODAY TO ARRANGE YOUR VIEWING!!!



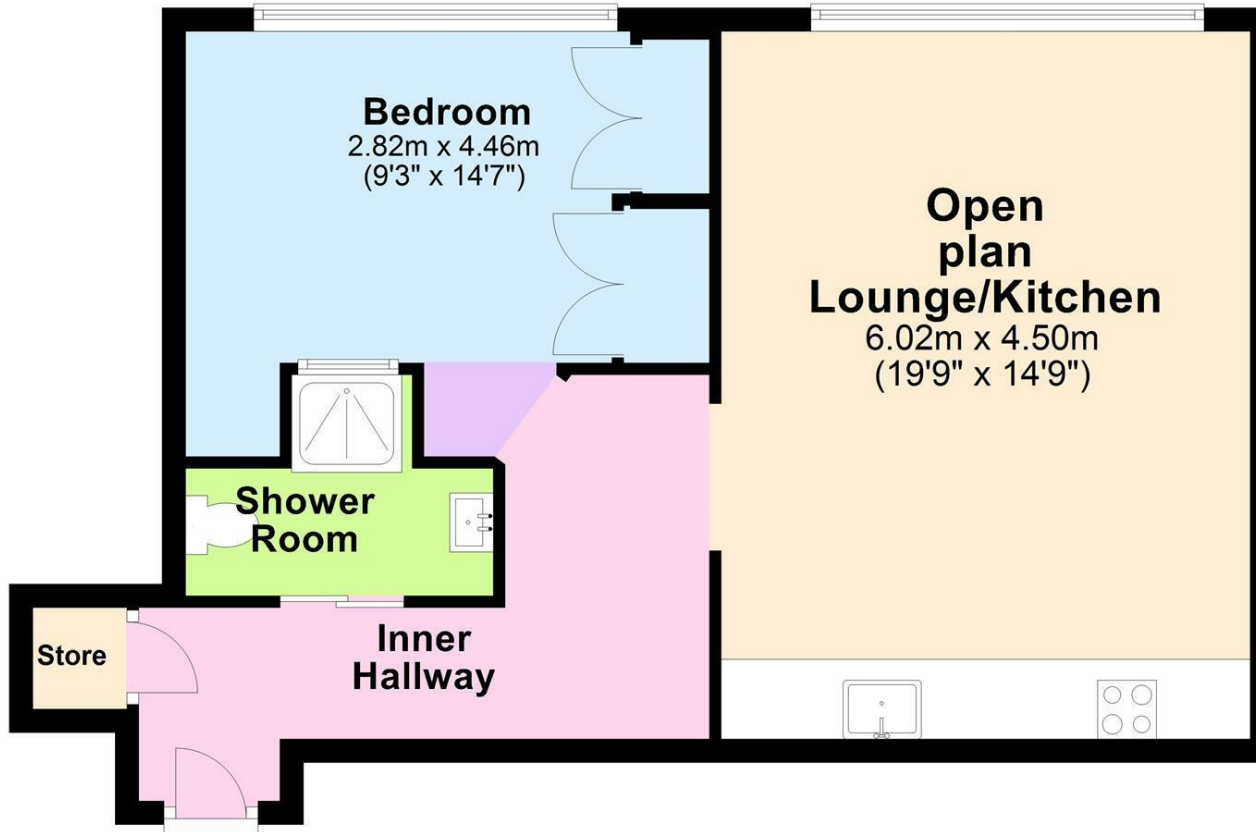
## Disclaimer:

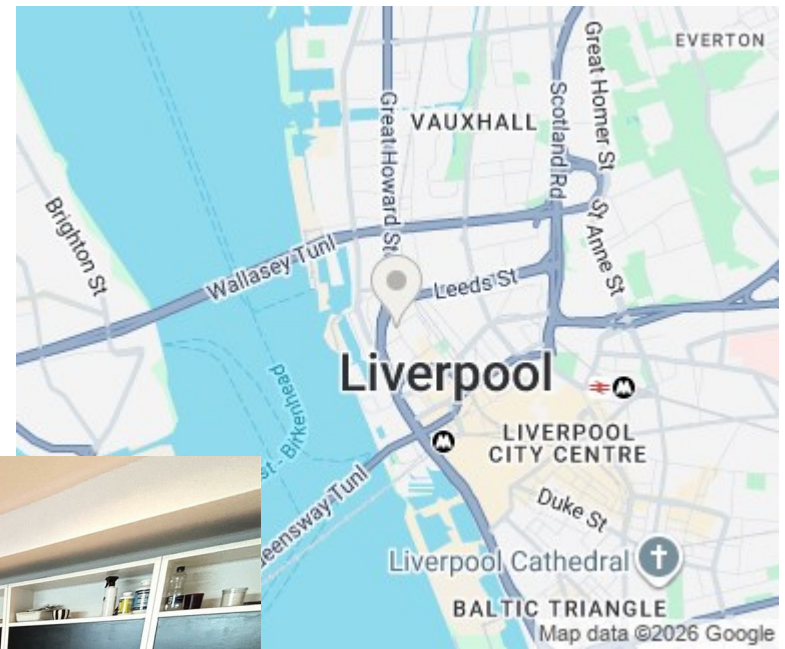
The  
adv  
only  
acc  
inte  
con  
spe  
adv  
ma  
the  
pro  
up  
and  
und  
notice. Prospective tenants are advised to read the full particulars for specific details that are important to them before entering into any agreement. We do not accept any liability for any loss or damage, whether in whole or in part, arising from the use of this information.



# BEETHAM TOWER 111, OLD

## Ground Floor





### Energy Efficiency Rating

	Current	Potential
<i>Very energy efficient - lower running costs</i>		
(92 plus) <b>A</b>		
(81-91) <b>B</b>		
(69-80) <b>C</b>	<b>79</b>	
(55-68) <b>D</b>		
(39-54) <b>E</b>		
(21-38) <b>F</b>		
(1-20) <b>G</b>		
<i>Not energy efficient - higher running costs</i>		
<b>England &amp; Wales</b>	EU Directive 2002/91/EC	



Agents Note: Whilst every care has been taken to prepare these particulars, they are for guidance purposes only. All measurements are approximate and are for general guidance purposes only and whilst every care has been taken to ensure their accuracy, they should not be relied upon and potential buyers/tenants are advised to recheck the measurements

Pall Mall Liverpool Mistoria  
22 Pall Mall  
Liverpool  
L3 6AL

0151 282 1539  
info@mistoria.co.uk  
mistoria.co.uk

