



**Connells**

Radwell Road  
Milton Ernest Bedford



## Property Description

Guide Price £300,00 to £325,000

Situated in the sought-after village of Milton Ernest, this well-presented three-bedroom mid-terrace home offers spacious accommodation and generous outdoor space, making it an ideal choice for families, first-time buyers, or investors.

The property benefits from a front garden and an extended rear garden, providing excellent space for outdoor enjoyment and entertaining.

Internally, the accommodation comprises an entrance hall leading to a bright and comfortable living room, which flows through to a kitchen/dining room at the rear of the property. A useful utility area completes the ground floor accommodation.

Upstairs, there are three well-proportioned bedrooms. The family bathroom is located on the ground floor.

Located within the popular village of Milton Ernest, the property enjoys a pleasant residential setting with convenient access to local amenities and transport links.

Early viewing is highly recommended to fully appreciate all that this property has to offer.



**Entrance Hall**

**Living Room**

**Kitchen/Diner**

**Utility Area**

**Family Bathroom**

**First Floor**

**Landing**

**Bedroom One**

**Bedroom Two**

**Bedroom Three**

**External**

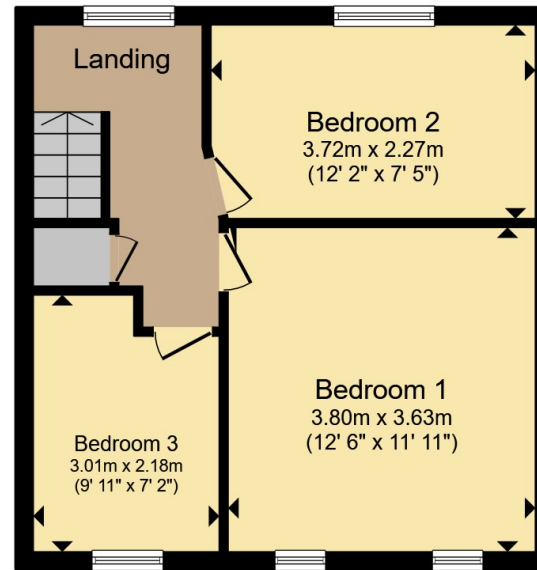
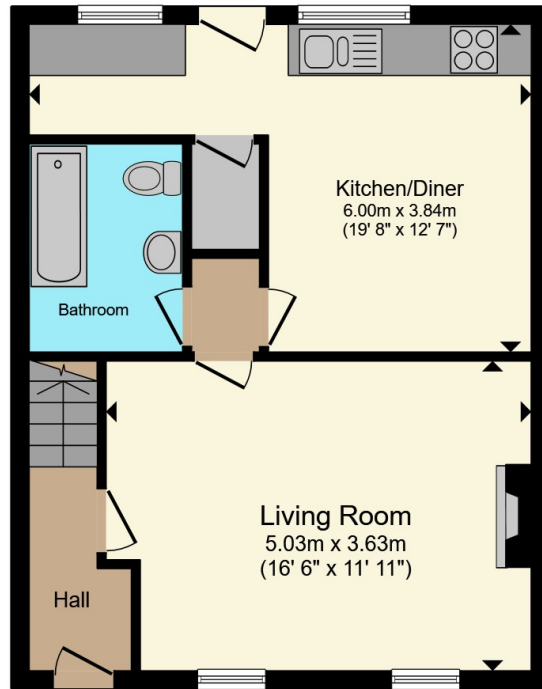
**Front Garden**

**Enclosed Rear Garden**









**Ground Floor**

**First Floor**

Total floor area 80.8 m<sup>2</sup> (869 sq.ft.) approx

This floor plan is for illustrative purposes only. It is not drawn to scale. Any measurements, floor areas (including any total floor area), openings and orientation are approximate. No details are guaranteed, they cannot be relied upon for any purpose and they do not form part of any agreement. No liability is taken for any error, omission or misstatement. A party must rely upon its own inspection(s). Powered by www.propertybox.io



To view this property please contact Connells on

**T 01234 345 303**  
**E [bedford@connells.co.uk](mailto:bedford@connells.co.uk)**

42 Allhallows  
BEDFORD MK40 1LN

EPC Rating: C Council Tax  
Band: C

Tenure: Freehold

**view this property online [connells.co.uk/Property/BED309825](http://connells.co.uk/Property/BED309825)**



1. MONEY LAUNDERING REGULATIONS Intending purchasers will be asked to produce identification documentation at a later stage and we would ask for your co-operation in order that there will be no delay in agreeing the sale. 2. These particulars do not constitute part or all of an offer or contract. 3. The measurements indicated are supplied for guidance only and as such must be considered incorrect. Potential buyers are advised to recheck measurements before committing to any expense. 4. We have not tested any apparatus, equipment, fixtures, fittings or services and it is in the buyers interest to check the working condition of any appliances.

Connells Residential is registered in England and Wales under company number 1489613, Registered Office is Cumbria House, 16-20 Hockliffe Street, Leighton Buzzard, Bedfordshire, LU7 1GN. VAT Registration Number is 500 2481 05.

**See all our properties at [www.connells.co.uk](http://www.connells.co.uk) | [www.rightmove.co.uk](http://www.rightmove.co.uk) | [www.zoopla.co.uk](http://www.zoopla.co.uk)**

Property Ref: BED309825 - 0005