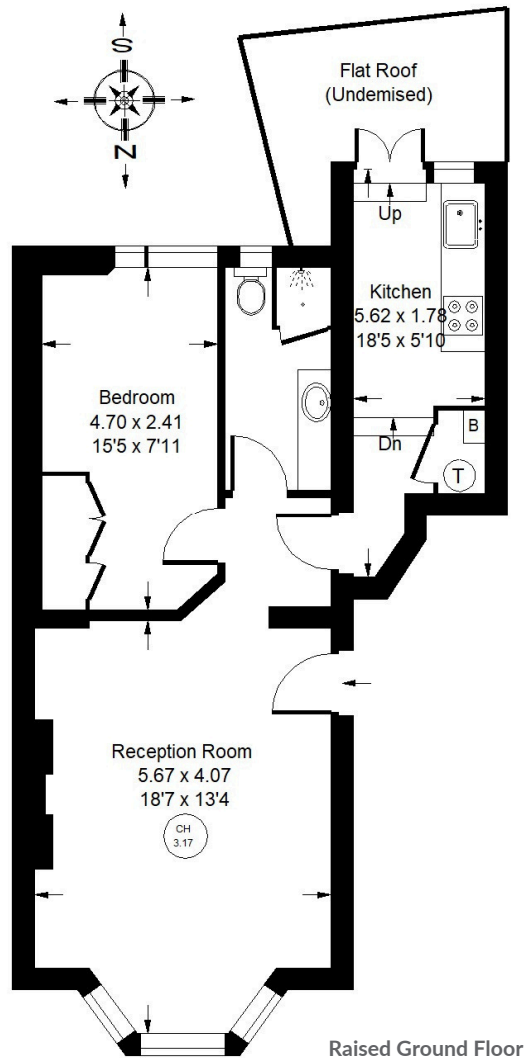


STRATFORD ROAD, W8



Approx. Gross Internal Area
= 49.8 sq m / 536 sq ft



Whilst every attempt has been made to ensure the accuracy of the floor plan, measurements are approximate and not to scale. No guarantee is given on the total square footage of the property quoted on the plan. Figures given are for guidance. Plan is for illustration purposes only, not to be used for valuations.



Stratford Road, W10 - Share of Freehold Local Authority - Royal Borough of Kensington & Chelsea

A charming raised ground floor apartment with wonderful high ceilings in the ever popular Stratford Village, in Kensington. This property has a re-fitted kitchen, a modern bathroom and a spacious bedroom with built-in storage overlooking the mews. The property benefits from large sash windows, wooden floors and a feature fireplace. The flat has access to a flat roof area (not demised) off the kitchen, which overlooks the mews also. The property is extremely well located, close to all the shops and restaurants on Stratford Road as well as High Street Kensington. There are fantastic transport links with direct access to the West End, including Kensington High Street tube station only a few minutes' walk away providing the Circle and District lines, and Earls Court providing the Piccadilly line also. There are excellent bus services from the High Street and Cromwell Road, and Holland Park is less than ten minutes walk.

- One Bedroom
- High Ceilings
- Prime Location
- EPC Rating = C
- Period Features
- Council Tax Band = F