

Redmayne Arnold & Harris
estate agents, letting agents & surveyors

rah.co.uk

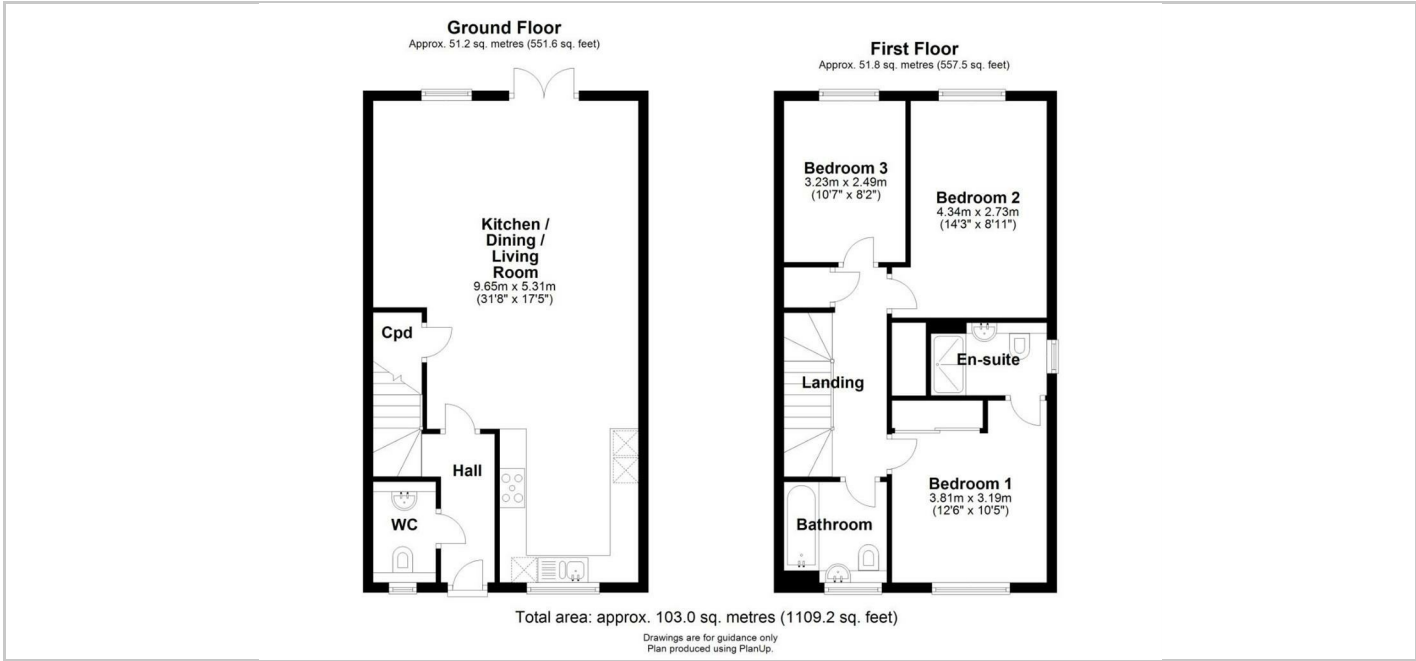


TO LET



3 Almond Close, Great Shelford, Cambridge, Cambridgeshire, CB22 5GG

£1,800 PCM



Directions

THE PROPERTY

A spacious, unfurnished three-bedroom home located in the highly sought-after village of Great Shelford, offering superb access to Addenbrooke’s Hospital, Cambridge city centre, the M11, the mainline railway station, and a wide range of local amenities.

The property welcomes you with an entrance hall and convenient downstairs WC, leading into a bright and modern open-plan living, kitchen, and dining area—perfect for both everyday living and entertaining. The kitchen is fully equipped with integrated appliances including a fridge freezer, washing machine, dishwasher, cooker, and hob.

Upstairs, the home features a spacious master bedroom with built-in wardrobe and ensuite shower room, two further well-proportioned bedrooms, and a contemporary family bathroom.

Externally, the property is set back from the road with a front garden, while the rear offers a private enclosed garden with shed. The property further benefits from off-road parking for two vehicles.

A basic gardening service is included in the rent.

The property is managed by the Landlord.

- EPC Rating: B
- Council Tax Band: E
- Deposit: £2070
- Holding deposit: £390
- Minimum tenancy length 12 months

SITUATION

