



Cucumber Lane, Cucumber Lane, Essendon

AL9 6JB

Price Guide £1,150,000



[stevenoates.com](http://stevenoates.com)



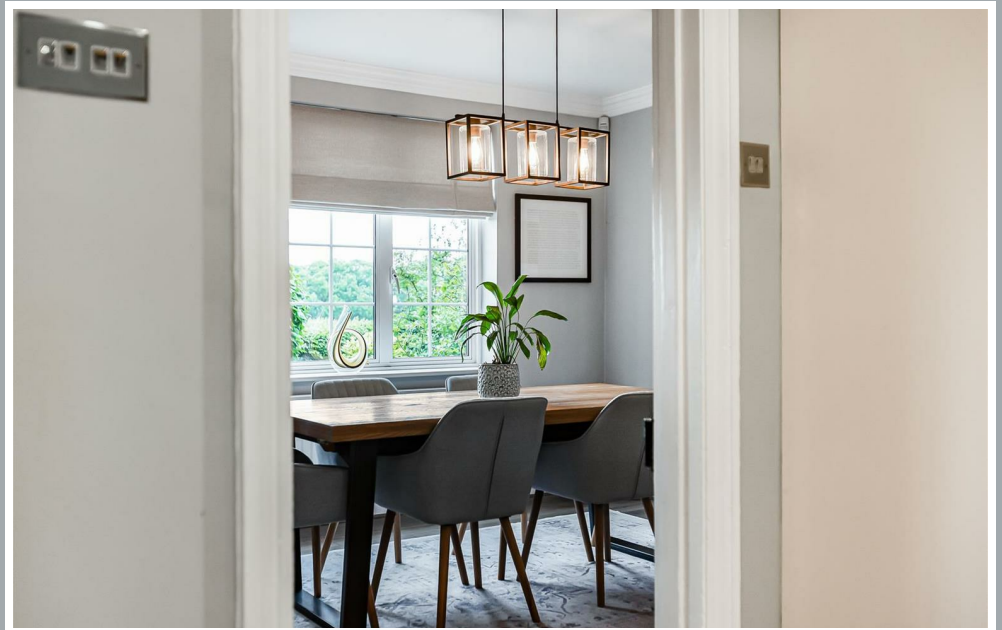
## Essenwell Cottage, Cucumber Lane Cucumber Lane, Essendon, Herts, AL9 6JB

A rare opportunity to acquire this beautifully presented three-bedroom, two-shower-room semi-detached character home, occupying a substantial quarter-acre plot in one of the area's most sought-after rural locations, nestled between Essendon and Little Berkhamsted. Originally constructed in the 1940s, the property has been thoughtfully extended and significantly improved over the years, creating a versatile and spacious family home that seamlessly blends period charm with modern living. The accommodation includes four reception rooms, a conservatory and well-balanced living space ideally suited to both family life and entertaining. The true highlight of the property is the exceptional rear garden, extending to approximately 70ft in width by 90ft in depth. Beautifully maintained and enjoying a high degree of privacy, the garden provides an outstanding outdoor environment rarely found with homes of this type. The generous plot also offers exciting potential for further enlargement or enhancement, subject to the necessary planning consents. To the front, there is ample off-street parking for numerous vehicles, together with a detached double garage providing excellent storage, workshop space and has planning permission to convert into a home office. Combining a picturesque countryside setting with substantial grounds, flexible accommodation and future scope, this is a truly unique home in a location where opportunities of this calibre seldom come to the market.

Essenwell Cottage enjoys an enviable position on the prestigious Cucumber Lane in the highly sought-after village of Essendon, one of Hertfordshire's most desirable locations. Surrounded by rolling countryside and protected woodland, the village offers a unique blend of rural tranquillity and excellent connectivity. Essendon is renowned for its charming village atmosphere, historic character and abundance of outdoor pursuits, including the highly regarded Essendon Country Club with its championship golf courses, whilst Cucumber Fields Wellness Centre is only about 70m away. The nearby villages of Brookmans Park and Little Berkhamsted provide a range of local amenities, while more comprehensive shopping and leisure facilities can be found in Hertford, Welwyn Garden City and St Albans. The area is particularly popular with families due to its selection of highly regarded schools in both the state and private sectors. For commuters, there are convenient rail services from nearby Brookmans Park and Welham Green stations, providing direct access into London King's Cross and Moorgate, whilst the A1(M), M25 and M11 are all within easy reach, offering excellent road links to London, the City, major airports and the wider motorway network.



70 Fore Street, Hertford, Hertfordshire, SG14 1BY



70 Fore Street, Hertford, Hertfordshire, SG14 1BY



70 Fore Street, Hertford, Hertfordshire, SG14 1BY





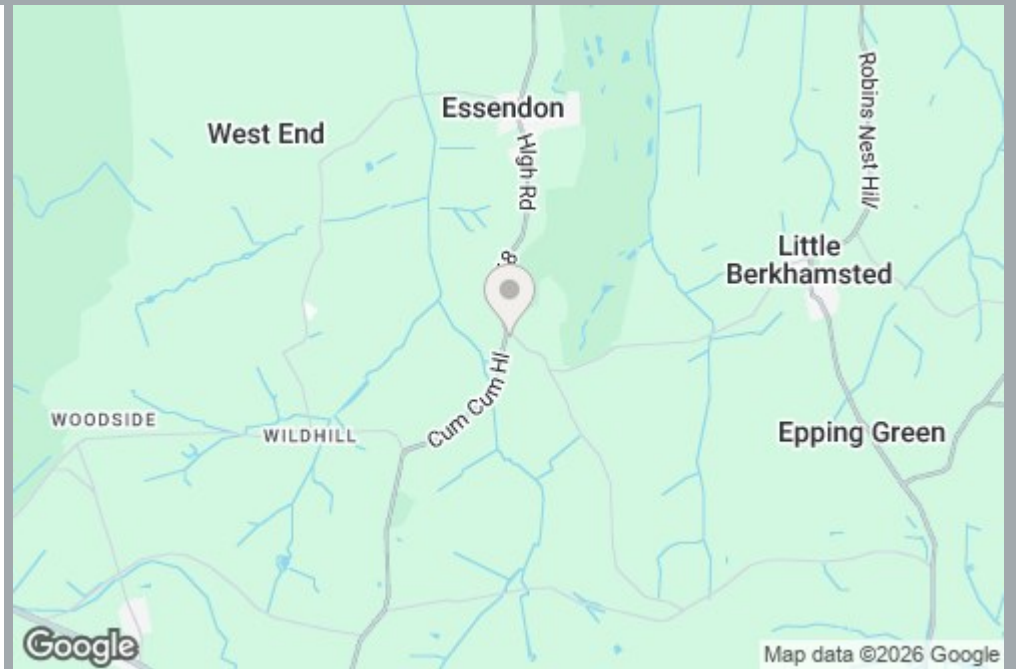
70 Fore Street, Hertford, Hertfordshire, SG14 1BY



70 Fore Street, Hertford, Hertfordshire, SG14 1BY



70 Fore Street, Hertford, Hertfordshire, SG14 1BY



**Approximate Gross Internal Area 1554 sq ft - 144 sq m  
(Excluding Garage)**

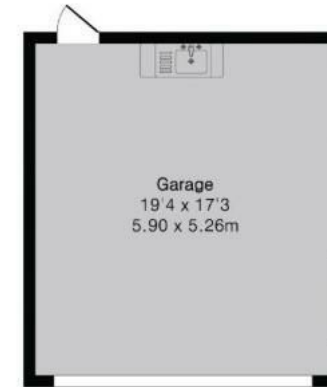
Ground Floor Area 951 sq ft – 88 sq m

First Floor Area 603 sq ft – 56 sq m

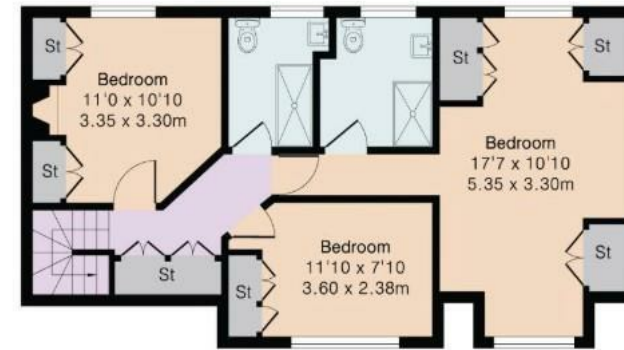
Garage Area 334 sq ft – 31 sq m



Ground Floor



Garage



First Floor

These particulars, whilst believed to be accurate are set out as a general outline only for guidance and do not constitute any part of an offer or contract. Intending purchasers should not rely on them as statements of representation of fact, but must satisfy themselves by inspection or otherwise as to their accuracy. No person in this firm's employment has the authority to make or give any representation or warranty in respect of the property.



stevenoates.com