

FREEHOLD



House - Semi-Detached (EPC Rating: D)

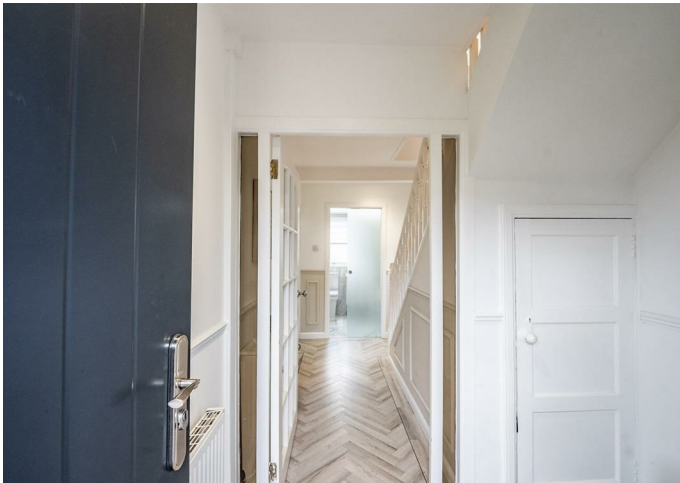
114 LEVEN ROAD, COATBRIDGE, ML5 2LW

Offers over

£149,995

FEATURES

- 2 Double Bedrooms
- Stunning kitchen
- Immaculate semi-detached home
- Detached garage for extra storage
- 3rd Single Bedroom with En-Suite
- Beautiful bathroom
- Driveway with electric gates
- New windows and doors installed



**SWEET
HOME**

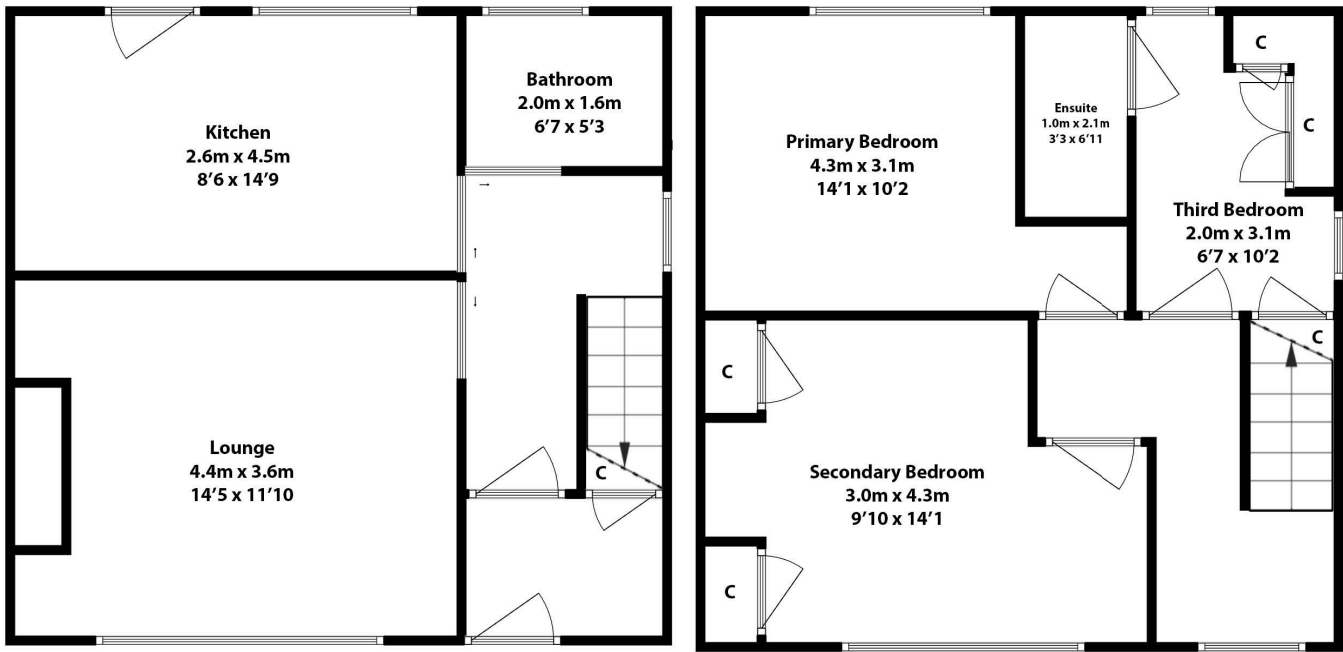


3 Bedroom House - Semi-Detached located in Coatbridge

Caroline Morrison of Sweet Home Scotland is delighted to market this exquisite semi-detached house nestled on Leven Road, in the charming town of Coatbridge, which offers a perfect blend of modern elegance and classic comfort. This property has been meticulously maintained and is presented in immaculate condition, making it an ideal home for families or professionals seeking a stylish living space.

The residence boasts three well-appointed bedrooms, including two spacious double rooms. The third bedroom has been thoughtfully transformed into a walk-in wardrobe, complete with an en suite shower room, providing a touch of luxury and convenience. The property features a welcoming reception room that flows seamlessly into a stunning kitchen, which is the heart of the home. The kitchen is adorned with decorative tray ceilings and enhanced by LED lighting, creating a warm and inviting atmosphere for both cooking and entertaining.

The bathroom is beautifully designed, showcasing stunning fixtures and finishes that elevate the overall aesthetic of the home. Additional highlights include new windows, doors and new boiler. As well as unique pocket glass doors that add a contemporary flair to the downstairs layout. The herringbone flooring in the hallway and kitchen adds a touch of sophistication and style.



Call us on

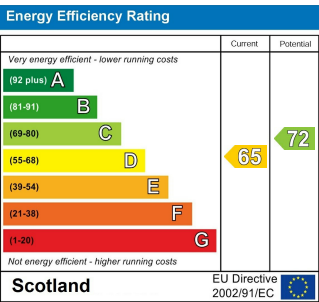
07717504350

sales@sweet-home.co.uk

<https://sweet-home.co.uk/>

Council Tax Band

A



Agents Note: Whilst every care has been taken to prepare these particulars, they are for guidance purposes only. All measurements are approximate and are for general guidance purposes only and whilst every care has been taken to ensure their accuracy, they should not be relied upon and potential buyers are advised to recheck the measurements.

