

House - Terraced

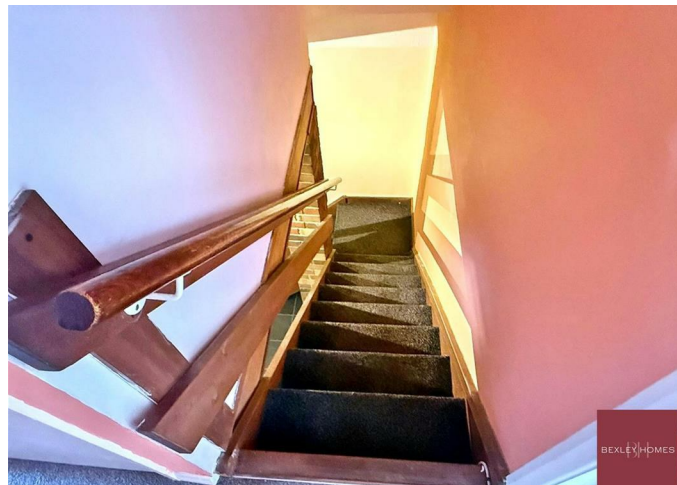
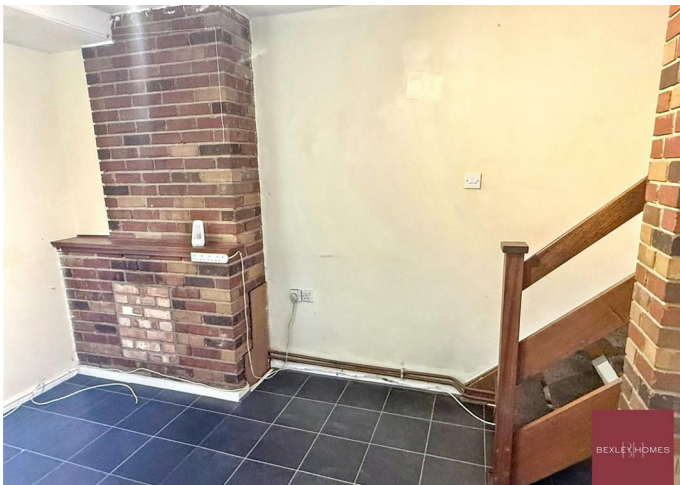
17 EDWARD STREET, CHATHAM, ME4 5NH

Per Month

£1,400

FEATURES

- 3 bedrooms
- local transport links
- large garden
- modern bathroom



BEXLEY HOMES

3 Bedroom House – Terraced located in Chatham

Situated in the area of Chatham, Kent, this mid-terraced home offers great living accommodation and excellent outdoor space, making it an ideal choice for families or couples. The property features two good-sized bedrooms on the first floor, providing comfortable and versatile living arrangements. On the ground floor, there is an additional room that can be used as a third bedroom, home office, dining room, or playroom, depending on your needs. The home benefits from a spacious and welcoming layout. To the rear, you'll find a long and expansive garden, offering plenty of space for outdoor entertaining, gardening enthusiasts, or family activities. Conveniently located, the property enjoys excellent transport links. Chatham railway station is within easy reach, providing regular services to London Victoria, London St Pancras International, and the surrounding Medway towns. The nearby A2 and M2 motorway networks offer straightforward road connections to London, Canterbury, and the Kent coast, making commuting and travel highly accessible. A range of local amenities, including shops, schools, supermarkets, and leisure facilities, are all close by, further enhancing the appeal of this attractive home.

Call us on


01322 948500

Belvedere@bexleyhomes.co.uk

www.bexleyhomes.co.uk

Council Tax Band

B

Energy Efficiency Rating		Current	Potential
<i>Very energy efficient - lower running costs</i>			
(92 plus) A			
(81-91) B			
(69-80) C			
(55-68) D			
(39-54) E			
(21-38) F			
(1-20) G			
<i>Not energy efficient - higher running costs</i>			
England & Wales		EU Directive 2002/91/EC 	

Agents Note: Whilst every care has been taken to prepare these particulars, they are for guidance purposes only. All measurements are approximate and are for general guidance purposes only and whilst every care has been taken to ensure their accuracy, they should not be relied upon and potential buyers are advised to recheck the measurements.

BEXLEY HOMES