

JAMES NEAVE
THE ESTATE AGENTS

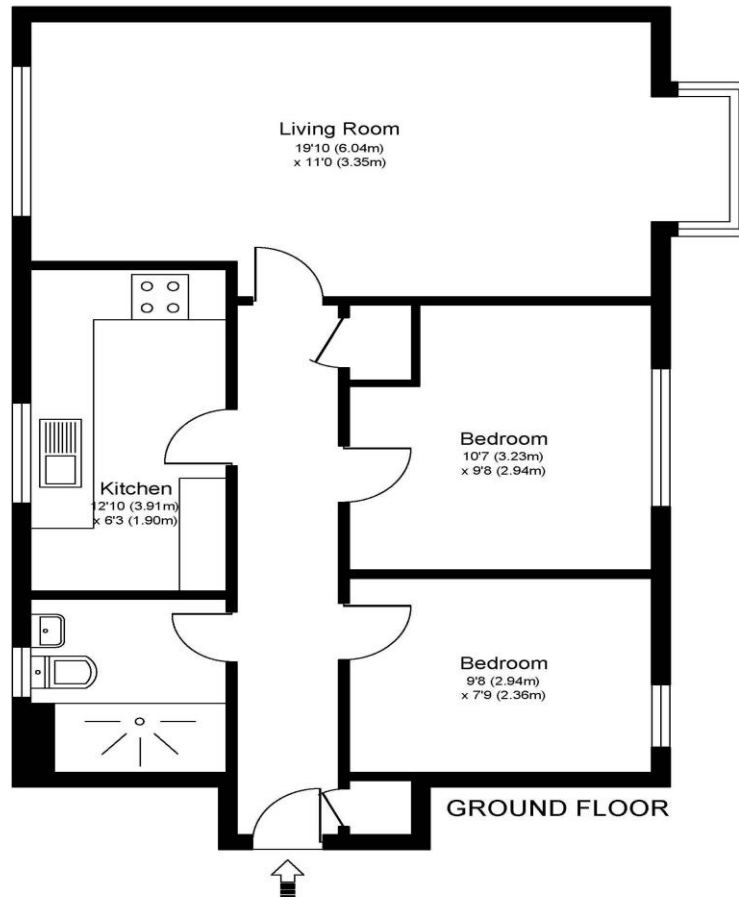


46 Collingwood Place Walton-On-Thames Surrey KT12 1LU

£1650pcm + Initial Deposit



COLLINGWOOD PLACE, WALTON ON THAMES, KT12

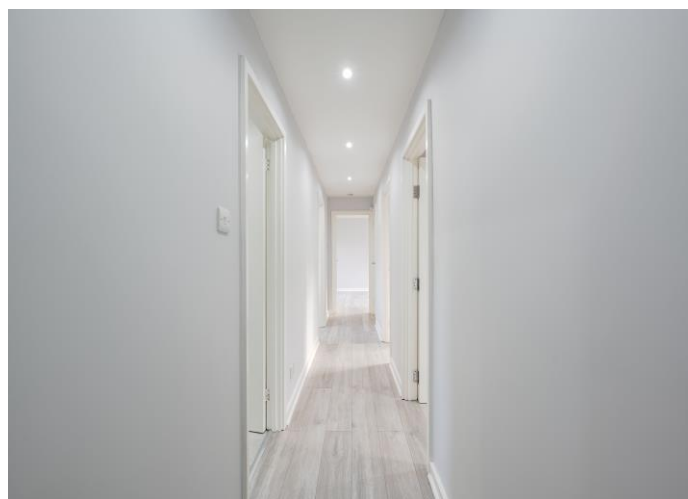


Approximate Gross Internal Floor Area: 56 m sq / 600 sq ft

Whilst every attempt has been made to ensure the accuracy of the floor plan contained here, measurements of doors, windows and rooms are approximate and no responsibility is taken for any error, omission or misstatements. These plans are not to scale and are for representation purposes only as defined by RICS Code of Measuring Practice and should be used as such by any prospective purchaser. Specifically no guarantee is given on total square footage of the property if quoted on this plan. Any figure given is for initial guidance only and should not be relied on as a basis of valuation.

A modern two-bedroom ground floor flat which is well positioned within this popular development. The flat has been finished in a modern neutral tone and benefits from wood flooring throughout. The living room has a front to back dual-aspect with bay window allowing lots of natural light in. The kitchen is fully fitted with a sleek white finish and benefits from a breakfast bar, and the bathroom has a big walk-in shower and grey tiling. You have two bedrooms and a storage cupboard. The development is well-maintained and benefits from a secure entry system, an allocated parking space plus visitor spaces. Walton mainline station is within close walking distance and has trains to London Waterloo in under half an hour.

Offered to rent unfurnished and available 20th May 2026. EPC Rating C.



AGENTS NOTES: These details do not constitute any part of an offer or contract. In issuing them we do not have any authority to give any warranty or representation whatsoever in respect of this property. These details are provided without any responsibility on our part or the part of the vendors. No statements in these details are to be relied upon as representations of fact and purchasers should satisfy themselves by inspection or otherwise as to the accuracy of the statements contained therein.

Equipment: We have not tested the equipment or central heating system mentioned in these particulars and purchasers are advised to satisfy themselves as to their working order and condition.

Measurements: Great care is taken when measuring but measurements should not be relied upon for ordering carpets, equipment, etc.