



## New Dales Close, Yarm, TS15 9FP

Located on the highly regarded Morley Carr development and within walking distance of Yarm High Street, this well presented four bedroom detached home was originally built by Taylor Wimpey to their 'Downham Design'.

Offered for sale with the advantage of NO CHAIN, the accommodation benefits from gas central heating and double glazing throughout and is ideally positioned for access to Yarm Train Station and a selection of reputable schools including Conyers Secondary School and Yarm Private School.

The accommodation comprises a welcoming hallway with ground floor cloaks/WC, a comfortable lounge and a spacious kitchen/dining room fitted with a range of units and integrated appliances including an oven, gas hob, dishwasher and washing machine. French doors open from the dining area into the rear garden, creating a pleasant flow of natural light and providing direct access to outdoor space.

To the first floor are four well proportioned bedrooms, with the master bedroom benefiting from built in wardrobes and an en suite shower room. A family bathroom serves the remaining bedrooms.

Externally, a double width driveway to the front leads to the garage, providing ample off road parking. The rear garden is mainly laid to lawn with a patio area, offering an ideal space for relaxing or entertaining.

This attractive family home combines a sought after location with practical living space and excellent local amenities close at hand.

Offers Over £350,000



# New Dales Close, Yarm, TS15 9FP

## HALLWAY

## LOUNGE

17'2" x 10'4" (5.23m x 3.15m)

## KITCHEN/DINING ROOM

25'11" x 9'8" (7.90m x 2.95m)

## DOWNSTAIRS WC

5'6" x 2'10" (1.68m x 0.86m)

## LANDING

## BEDROOM ONE

14'1" x 9'11" (4.29m x 3.02m)

## ENSUITE

7'9" x 5'1" (2.36m x 1.55m)

## BEDROOM TWO

11'7" x 9'11" (3.53m x 3.02m )

## BEDROOM THREE

11'7" x 10'10" (3.53m x 3.30m)

## BEDROOM FOUR

8'7" x 8'3" (2.62m x 2.51m)

## BATHROOM

8'2" x 6'10" (2.49m x 2.08m)

## AML PROCEDURE

To comply with anti-money laundering regulations (AML) all estate agents must be registered with HMRC. Gowland White complies with this legislation by using an online AML risk assessment company, approved by the UK Government. Please note that all buyers are charged a fee of £36.00 (inc. VAT), for each buyer, to cover this process. These fees are payable before we can progress an agreed sale.



New Dales Close, Yarm, TS15 9FP



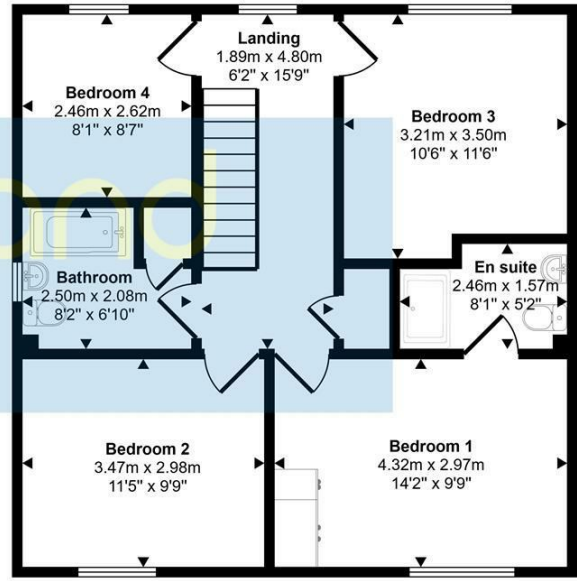
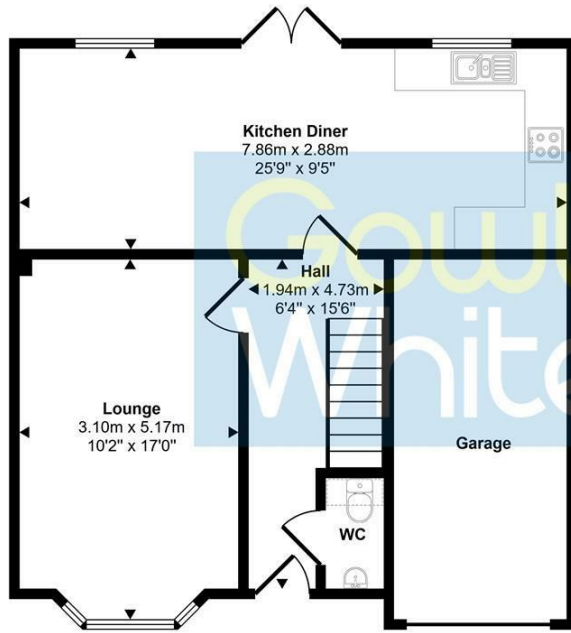
# New Dales Close, Yarm, TS15 9FP



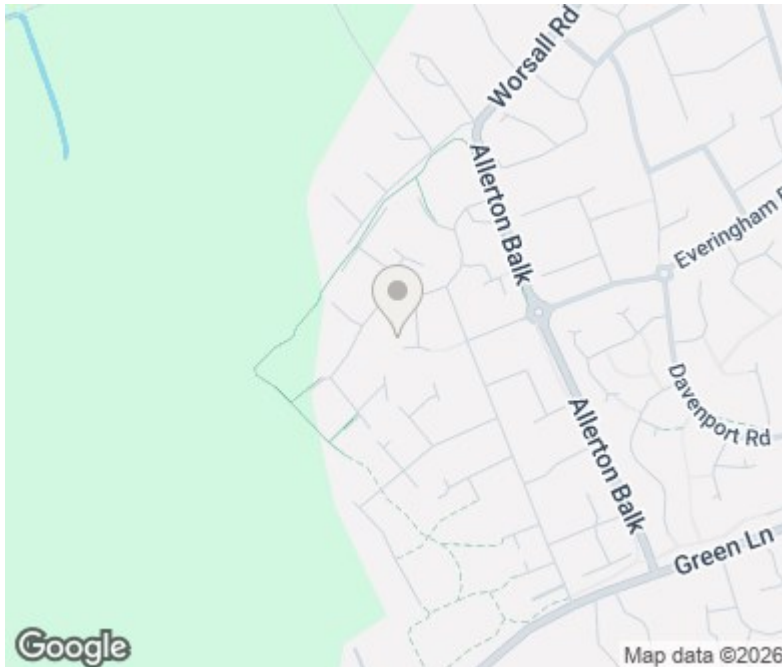


# New Dales Close, Yarm, TS15 9FP

Approx Gross Internal Area  
126 sq m / 1352 sq ft



This floorplan is only for illustrative purposes and is not to scale. Measurements of rooms, doors, windows, and any items are approximate and no responsibility is taken for any error, omission or mis-statement. Icons of items such as bathroom suites are representations only and may not look like the real items. Made with Made Snappy 360.



| Energy Efficiency Rating                    | Current                 | Potential |
|---|-------------------------|-----------|
| Very energy efficient - lower running costs |                         |           |
| (92 plus) <b>A</b>                          |                         | <b>93</b> |
| (81-91) <b>B</b>                            | <b>83</b>               |           |
| (69-80) <b>C</b>                            |                         |           |
| (55-68) <b>D</b>                            |                         |           |
| (39-54) <b>E</b>                            |                         |           |
| (21-38) <b>F</b>                            |                         |           |
| (1-20) <b>G</b>                             |                         |           |
| Not energy efficient - higher running costs |                         |           |
| <b>England &amp; Wales</b>                  | EU Directive 2002/91/EC |           |

| Environmental Impact (CO <sub>2</sub> ) Rating                  | Current                 | Potential |
|---|-------------------------|-----------|
| Very environmentally friendly - lower CO <sub>2</sub> emissions |                         |           |
| (92 plus) <b>A</b>  |                         |           |
| (81-91) <b>B</b>  |                         |           |
| (69-80) <b>C</b>  |                         |           |
| (55-68) <b>D</b>  |                         |           |
| (39-54) <b>E</b>  |                         |           |
| (21-38) <b>F</b>  |                         |           |
| (1-20) <b>G</b>   |                         |           |
| Not environmentally friendly - higher CO <sub>2</sub> emissions |                         |           |
| <b>England &amp; Wales</b>                                      | EU Directive 2002/91/EC |           |

## VIEWING

Please contact us on 01642 248248 if you wish to arrange a viewing or would like more information.

These particulars, whilst believed to be accurate are set out as a general outline only for guidance and do not constitute any part of an offer or contract. Intending purchasers should not rely on them as statements of representation of fact, but must satisfy themselves by inspection or otherwise as to their accuracy. No person in this firm's employment has the authority to make or give any representation or warranty in respect of the property.

101 High Street, Yarm, TS15 9BB  
yarm@gowlandwhite.co.uk

Tel: 01642 248248