



Asking Price Of £170,000

Castle Court, Cary
Park, Torquay, TQ1
3NE

A beautifully presented two bedroom, retirement apartment situated in Cary Park in a desirable area, conveniently situated between St. Marychurch and Babbacombe with local amenities close by. The apartment is presented to a very good standard and comprises of lounge/diner, kitchen, bathroom and two double bedrooms. Outside are communal gardens and parking.



Door into:-

HALLWAY Two storage cupboards.

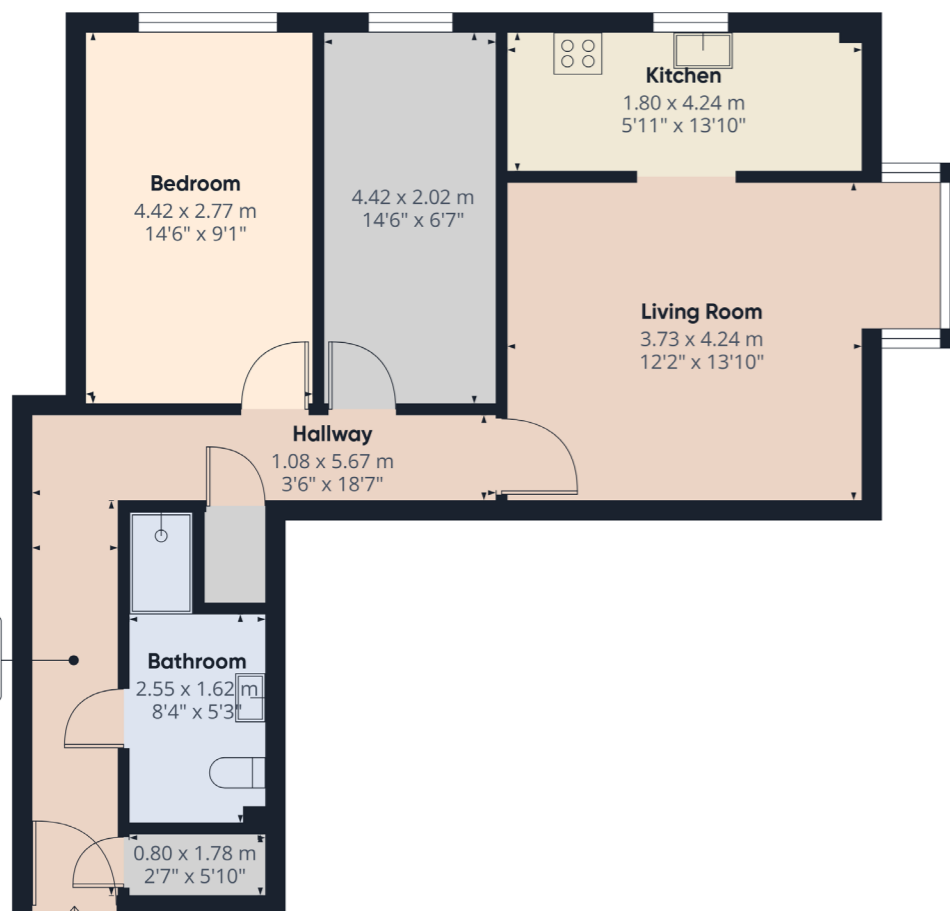
BEDROOM ONE Double room, built in wardrobes, window to side, electric radiator.

BEDROOM TWO Double, window to side and electric radiator.

LOUNGE/DINER A spacious lounge diner with bay window to front, outlook to Cary Park, marble fire surround with built in electric fire and electric radiator.

KITCHEN Fitted kitchen with drawers and cupboards over and under surfaces, space for fridge/freezer, space for washing machine and space for dryer, built in oven and hob and window to side.

OUTSIDE Communal gardens and parking, Visitors parking.



Address 'Castle Court, Cary Park,
Torquay, TQ1 3NE'

Tenure 'Leasehold'

Council Tax Band 'C'

EPC Rating '75 | C'

Taylor's Estate Agents
256 Torquay Road
Paignton
TQ3 2EZ