

Rounthwaite **R&W** Woodhead

53 MARKET PLACE, MALTON, NORTH YORKSHIRE, YO17 7LX Tel: (01653) 600747

ACRES END BUSH GARDENS, AMOTHERBY, MALTON, YO17 6TH



- Wonderful detached bungalow
 - Two double bedrooms
- Mature, well stocked gardens
- Scope for cosmetic updating
- Spacious, flexible reception rooms
- House bathroom and en suite shower room
- Garage and driveway parking
- No forward chain

£325,000

Also at: 26 Market Place, Kirkbymoorside Tel: (01751) 430034 & Market Place, Pickering Tel: (01751) 472800

Email: malton@rounthwaite-woodhead.co.uk

www.rounthwaite-woodhead.com

Description

This substantial detached bungalow is set in a wonderful, mature plot and positioned approximately two miles from Malton. Amotherby is a sought-after, well-connected village which boasts amenities including a school, village hall and popular restaurant. A much loved property that has been well maintained yet offers scope for further improvement and cosmetic updating. Acresend is sure to appeal to a range of potential purchasers.

An entrance hall leads to a well proportioned reception room which is light and airy and a spacious dining kitchen and utility room beyond. Both bedrooms are generous double rooms with en suite shower room to the master and house bathroom.

Externally, the benefits include a brick built single garage, well stocked, attractive gardens to the front and rear and driveway parking.

General Information

Services: Mains water, electricity and connection to mains drainage. Oil fired central heating.

Tenure: We are informed the property is freehold and that vacant possession will be given on completion. Council

Tax - TBC

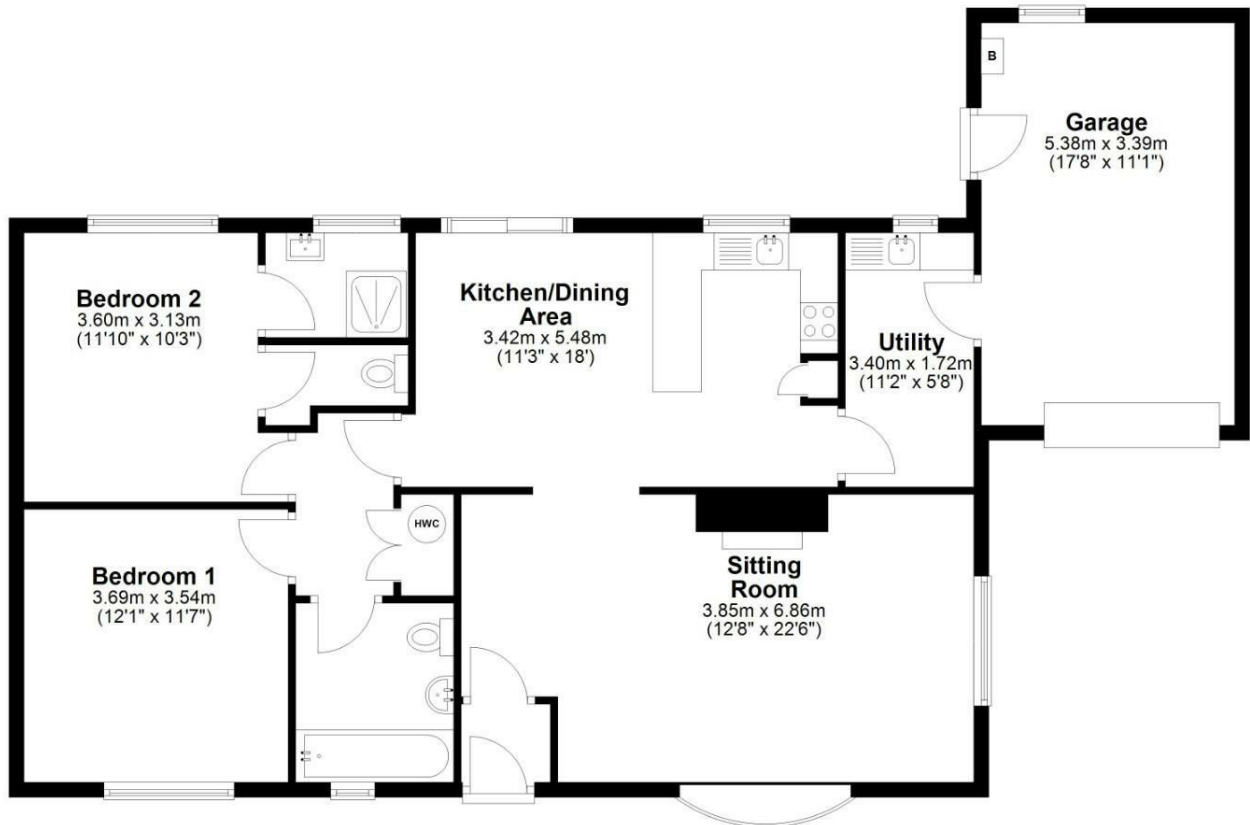
Viewing: Strictly by appointment



Accommodation


Ground Floor

Approx. 112.4 sq. metres (1209.7 sq. feet)



Total area: approx. 112.4 sq. metres (1209.7 sq. feet)

Acres End, Amotherby

Energy Efficiency Rating		
	Current	Potential
Very energy efficient - lower running costs		
(92 plus) A	59	98
(81-91) B		
(69-80) C		
(55-68) D		
(39-54) E		
(21-38) F		
(1-20) G		
Not energy efficient - higher running costs		
England & Wales		
EU Directive 2002/91/EC		
		

Environmental Impact (CO ₂) Rating		
	Current	Potential
Very environmentally friendly - lower CO ₂ emissions		
(92 plus) A		
(81-91) B		
(69-80) C		
(55-68) D		
(39-54) E		
(21-38) F		
(1-20) G		
Not environmentally friendly - higher CO ₂ emissions		
England & Wales		
EU Directive 2002/91/EC		



Messrs Rounthwaite & Woodhead for themselves and their vendors and lessors whose agents they are give notice that these particulars are produced in good faith, set out as a general guide only and do not constitute any part of a contract. No person employed by Messrs Rounthwaite & Woodhead has any authority to make or give any representation or warranty whatsoever in relation to this property. The dimensions in the sales particulars are approximate only and the accuracy of any description cannot be guaranteed. Reference to machinery, services and electrical goods does not indicate that they are in good or working order. All reference to prices and rents etc. exclude VAT which may apply in some cases.

Covering Ryedale through offices in Malton, Pickering and Kirkbymoorside
www.rounthwaite-woodhead.com

Rounthwaite **R&W** Woodhead