

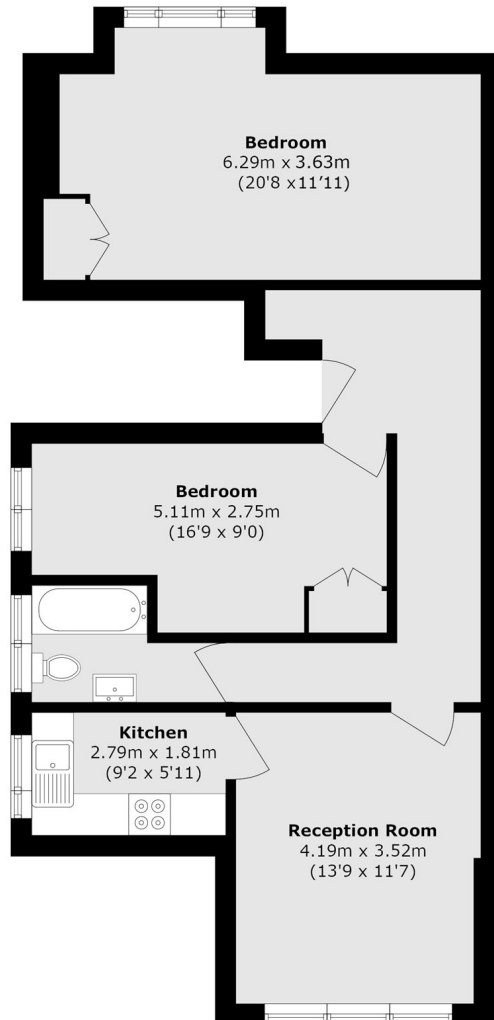


Wolverton Gardens, W5

£435,000

A top floor two bedroom period conversion apartment in this imposing semi-detached property moments from Ealing Common. The property has a share of freehold and is offered with no onward chain.

Wolverton Gardens is moments from Ealing Common station and within half a mile of both North Ealing and West Acton stations all of which provide excellent access into town.



Total area (approx.): 71.3 sq. m (767.4 sq. ft)

Robertson Smith & Kempson Acton Sales
137 High Street, Acton,
London, W3 6LY
020 8896 3996
actonsales@robertsonsmithandkempson.co.uk

Energy Rating: D. We aim to make our particulars both accurate and reliable. However they are not guaranteed; nor do they form part of an offer or contract. If you require clarification on any points then please contact us, especially if you're traveling some distance to view. Please note that appliances and heating systems have not been tested and therefore no warranties can be given as to their good working order.