



Vasterne Close - Purton

Guide Price **£485,000**

mcfarlane
property.com

Vasterne Close

Purton, Swindon

This Spacious FOUR Bedroom Family Home in the sought after Cul-De-Sac of Vasterne Close, has been Extended and Improved over the years creating a unique Family Home that is finished to a high standard. This property boasts a Generous Plot with the ability to Park THREE or more Cars on the Driveway, but the Main Feature is its Location. The Rural views to Rear are simply Stunning.

- FOUR Double Bedrooms
- Rural Aspects
- Extended and Improved
- Sought After Cul-De-Sac Position
- Parking for THREE + Cars
- Deceptively Spacious Family Home
- Light & Airy Throughout
- Underfloor Heating (Kitchen & Conservatory)



Vasterne Close

Purton, Wiltshire

Council Tax band: D

Tenure: Freehold

Purton is a larger village in Wiltshire located about 4 miles from the centre of Swindon. The capital of the Cotswold's Cirencester lies approximately 12.5 miles to the north with both market towns offering considerable amenities and shopping opportunities. Purton boasts a spirited community with schooling and sports and social clubs.

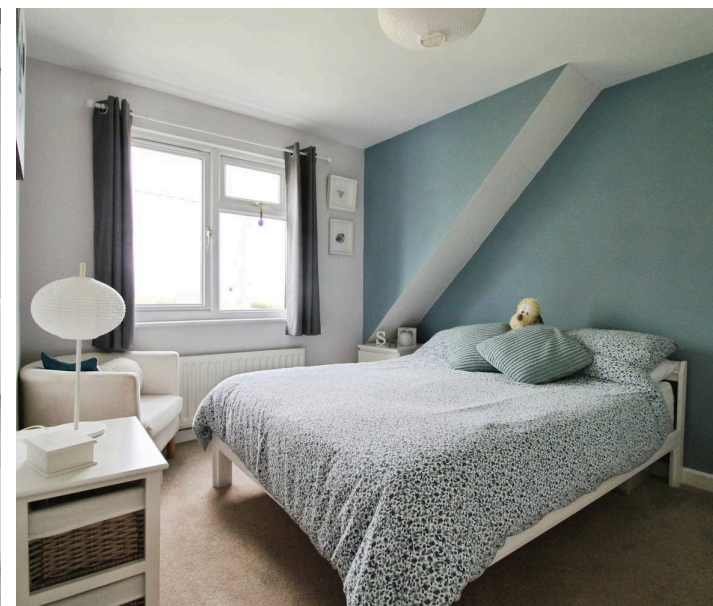
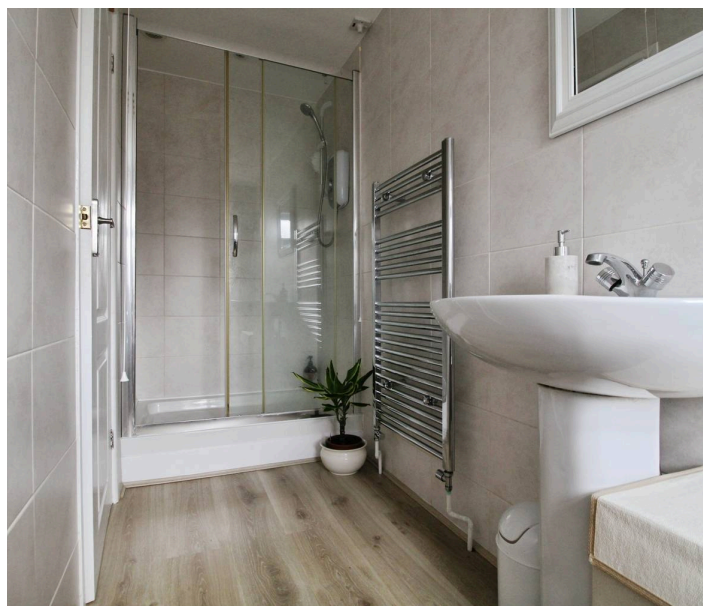
Viewing advised and by appointment ONLY

McFarlane

Cricklade

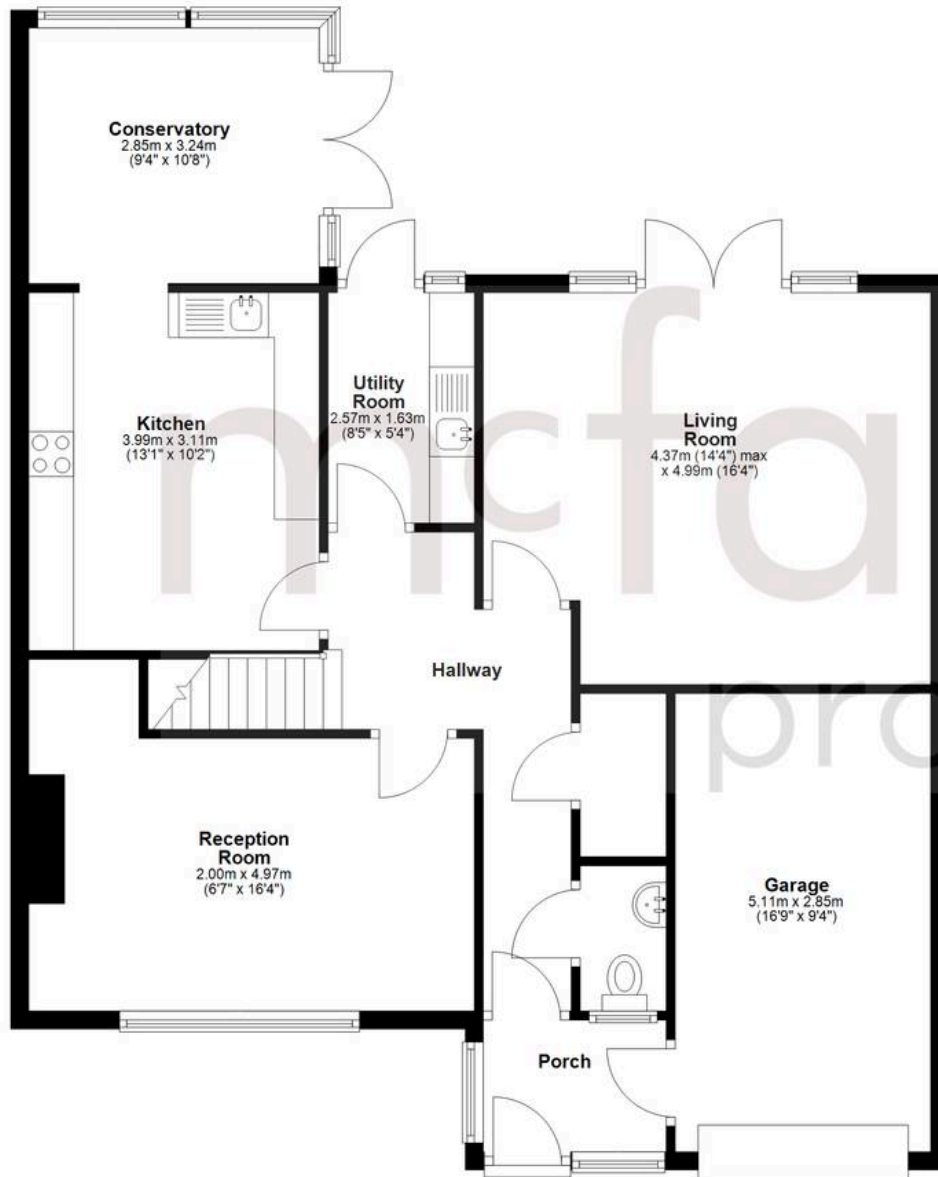
01793 751 044.

mcfarlane
property.com



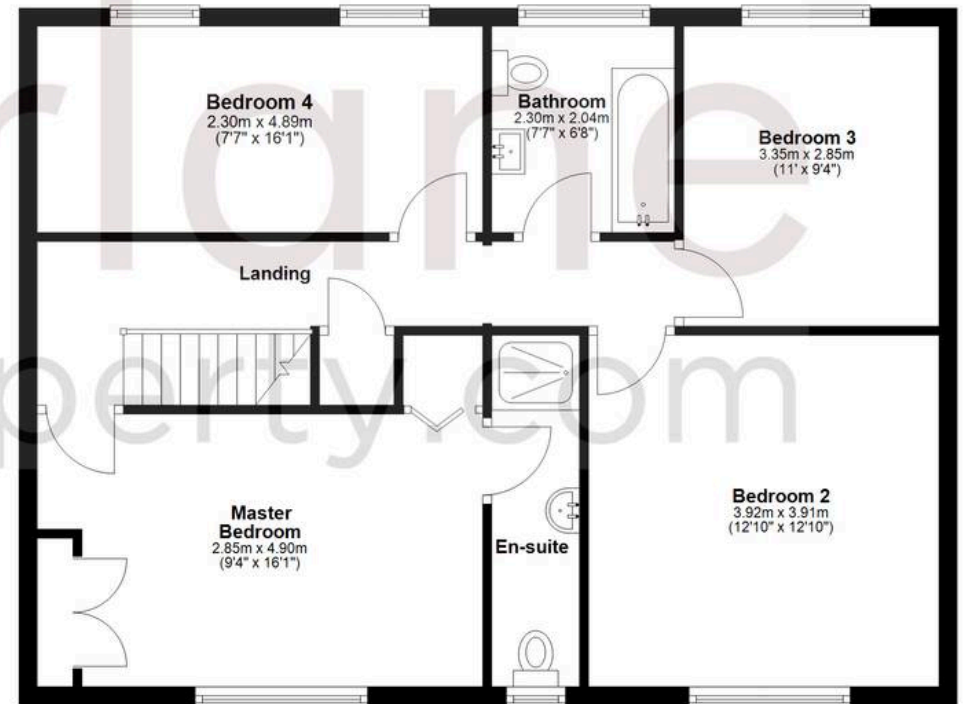
Ground Floor

Approx. 97.7 sq. metres (1052.0 sq. feet)



First Floor

Approx. 73.3 sq. metres (789.4 sq. feet)



Total area: approx. 171.1 sq. metres (1841.4 sq. feet)

Agents Note: Whilst every care has been taken to prepare these sales particulars, they are for guidance purposes only. All measurements are approximate and for general guidance purposes only and whilst every care has been taken to ensure their accuracy, they should not be relied upon and potential buyers are advised to recheck the measurements.