

TG

SALES & LETTINGS



Great Oldbury Drive, Great Oldbury, Stonehouse Gloucestershire GL10 3FX

£315,000

- IDEAL FIRST TIME BUY OR FAMILY HOME
- IMMACULATELY PRESENTED THROUGHOUT
- LARGER THAN AVERAGE REAR GARDEN
- OFF ROAD DRIVEWAY PARKING FOR TWO
- FANTASTIC LINKS TO PUBLIC TRANSPORT
- BUILT BY REDROW IN 2019 - REMAINING NHBC WARRANTY
- CLOAKROOM, EN-SUITE & FAMILY BATHROOM
- FULLY FITTED KITCHEN/DINER

The property,

****IMMACULATE THREE-BEDROOM SEMI-DETACHED HOME WITH ENVIABLE VIEWS TO THE FRONT OF MATURE TREES AND GREEN SPACE AND YET WITH FANTASTIC LINKS TO LOCAL AMENITIES SCHOOLS AND THE M5 MOTORWAY****

TG Sales is delighted to welcome to the market this beautifully presented and immaculately maintained three-bedroom semi-detached home in ever-popular Great Oldbury. Flooded with natural light throughout and yet with a warm and inviting atmosphere in every room this home is ready to move in to and enjoy! Stepping through the front door, you are greeted by a light and airy entrance hallway with downstairs cloakroom to your right fitted with a contemporary white suite and stylish shutters to the window.

To the front of the home is a spacious lounge bathed with light from large windows offering a delightful outlook to trees and green space beyond.

To the rear of the home, you will find a large kitchen/diner fitted with integrated appliances and an enclosed utility cupboard for housing all your laundry appliances. The room is complete with patio doors leading out to a larger than average and beautifully kept rear garden with extended patio perfect for family life and for hosting those friends and family get-togethers.

Upstairs you will find two double bedrooms and a large single, this being perfect for a WFH space, a children's room or nursery. The master bedroom benefits from built-in wardrobes and an en-suite shower room with dual fuel heated towel rail. The family bathroom has a contemporary white suite with over-bath shower and stylish shutters fitted to the window.

To the outside you will find off-road driveway parking for two vehicles and gated access to the rear garden.

Viewing is an absolute must to appreciate all that this lovely home has to offer



Situation

Great Oldbury is a thriving community situated just on the edge of the vibrant town of Stonehouse. The town offers an abundance of shops and other local amenities including GP surgeries, chemists, pubs, supermarkets, independent butchers, restaurants and fast food/takeaway outlets. The town also has its own mainline railway station, which has a regular service to London, Cheltenham and Gloucester. There are 2 primary schools (Park Infant & Junior), one secondary school (Maidenhill) and independent schools (Wycliffe College and Hopelands Preparatory School). There are also a number of footpaths and lanes that lead from the town to the nearby Stroudwater canal and the Cotswold Way walking trail passes close to the town.

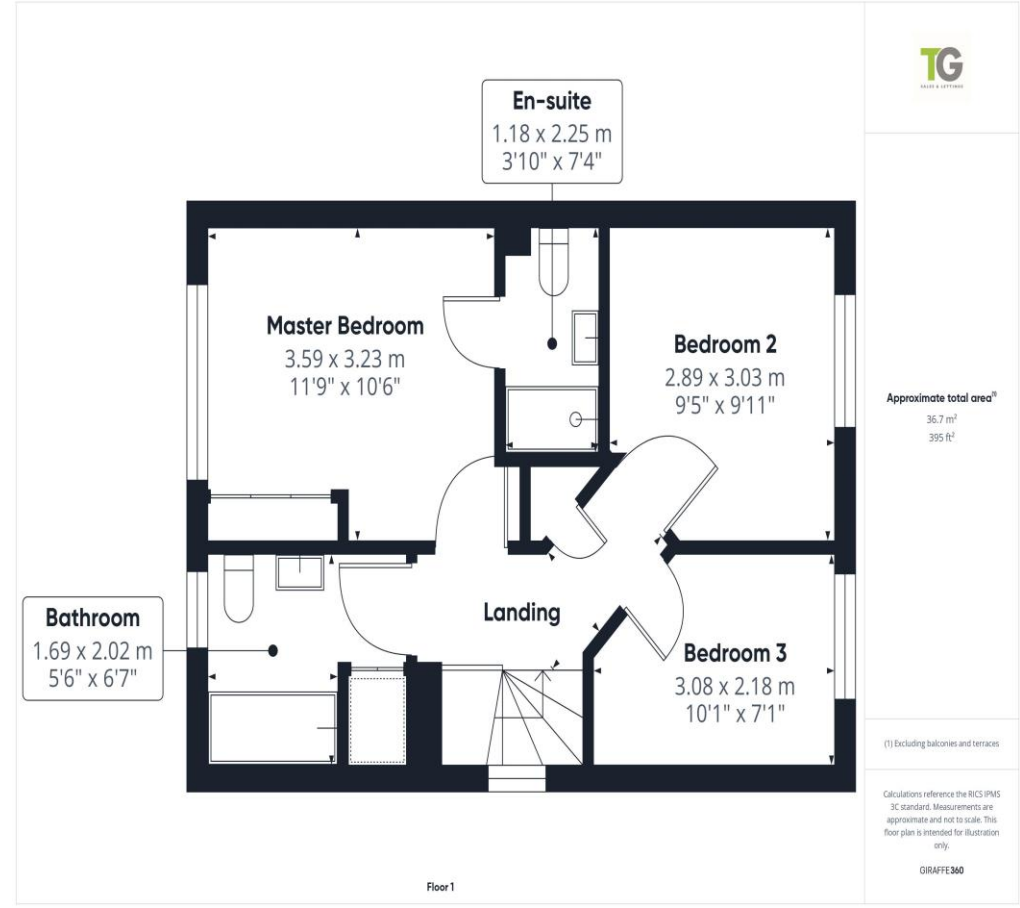
Tenure Freehold

Local Authority Gloucester

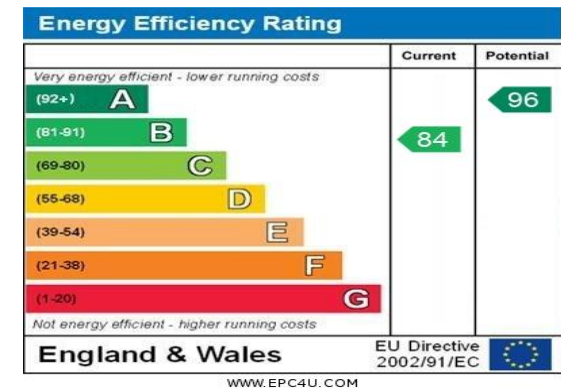
Services Electric, Mains Gas, Mains Drainage and Water are all believed to be connected to the property.

Council tax band C





Head Office
TG Sales & Lettings
48 Stroud Road
Gloucester
Gloucestershire
GL1 5AJ
Tel: 01452 311776
Email: info@tgres.co.uk
Website: www.tgres.co.uk



T G Sales & Lettings and any parties they are acting for hereby give you notice that: These details are for guidance only and cannot guarantee the accuracy of any description, dimension, condition or any required permission for occupation and use. It is not company policy to test any services or appliances in properties offered for sale and these should be verified by the purchaser's solicitors. T G Sales & Lettings will not be liable for any loss arising from the use of these details. No responsibility is taken for any errors, omissions or misstatements within these particulars. It should not be assumed that the property has all the necessary planning, building regulation or other consents. These particulars do not form any part of any offer or contract and must not be relied upon as statements or representations of fact. Buyers are advised to seek advice from their legal representation. T G Sales & Lettings is a limited liability partnership registered in England and Wales. Registered Number: 9763381 Registered Office: 48 Stroud Road, Gloucester, Gloucestershire, GL1 5AJ.