



Whitehall Park Road, W4 £1,475,000

OIEO A charming four double bedroom Victorian family home in the heart of Grove Park, with perfectly retained period features, cellar and substantial west-facing garden.

Whitehall Park Road is a wide no-through residential street, within a short distance of Chiswick House and Gardens, Chiswick High Road and the River Thames. Chiswick rail station is 0.7 miles away with a regular fast connection to Clapham Junction, Vauxhall and Waterloo. Gunnersbury station is 0.5 miles away (District Line). There are superb local amenities on Fauconberg Road, including the locally renowned Grove Park Deli and Copper Cow Restaurant/Bar. Chiswick offers easy access to central London, the A4 and M4 for Heathrow, and onto the M25 for the M3 and M40 to the countryside.

Features

- Victorian Home
- Four Double Bedrooms
- Two Bathrooms
- West-Facing Garden
- Outstanding School Catchment
- No Onward Chain



Whitehall Park Road, W4

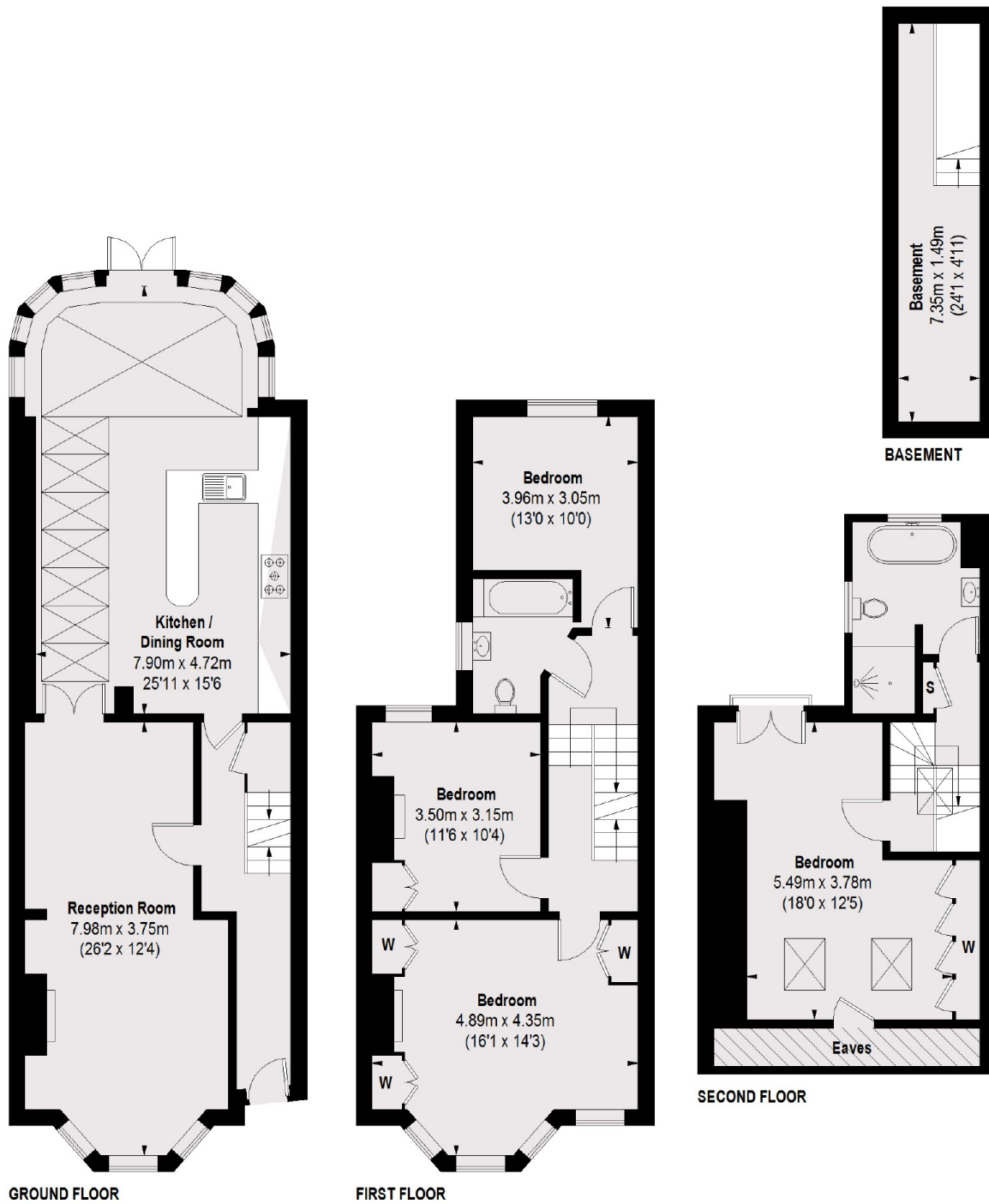
The ground floor has the front reception room with large bay window, fully extended eat-in kitchen and entertaining area, leading onto the well maintained west-facing garden. There is also access to the cellar as additional storage space.

On the first floor there is one family bathroom and three double bedrooms, the largest of which to the front has a striking bay window.

To the top floor there is the large primary double bedroom with en-suite.



Whitehall Park Road, London, W4



TOTAL APPROX. FLOOR AREA (EXCLUDING EAVES)
1844 SQ. FT. (171.29 SQ. M.)