

# Greenwood Gardens, Radlett

£975,000 (Freehold)

**VILLAGE**  
ESTATES



This stunning five-bedroom home is positioned at the top end of Porters Park, set within a popular and quiet close. Ideally located, it is just a short walk from local amenities including shops, doctors, and Shenley Park.

The property features five bedrooms (four doubles and one single), a dressing room off the master bedroom, and three bathrooms—two en-suites, a family bathroom, and a downstairs WC. The generous living accommodation includes a fully fitted kitchen, breakfast room, dining room, living room, and a garage.

Beautifully maintained and presented in immaculate condition, the home further benefits from a driveway for two cars and a beautifully landscaped garden.

Immediate viewing is highly recommended.

**01923 852434**  
[www.village-estates.co.uk](http://www.village-estates.co.uk)



Village Estates  
70d Watling Street, Radlett  
Herts WD7 7NP

Important Note: These particulars do not form part of any contract. All measurements are approximate and should not be relied upon. All prices quoted are strictly subject to contract.



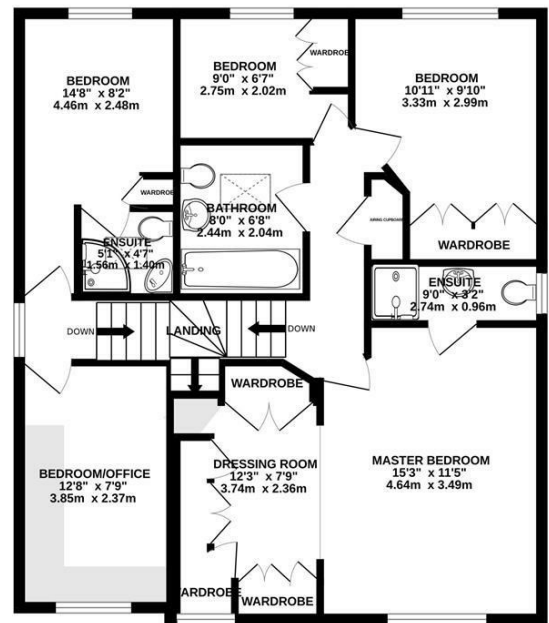
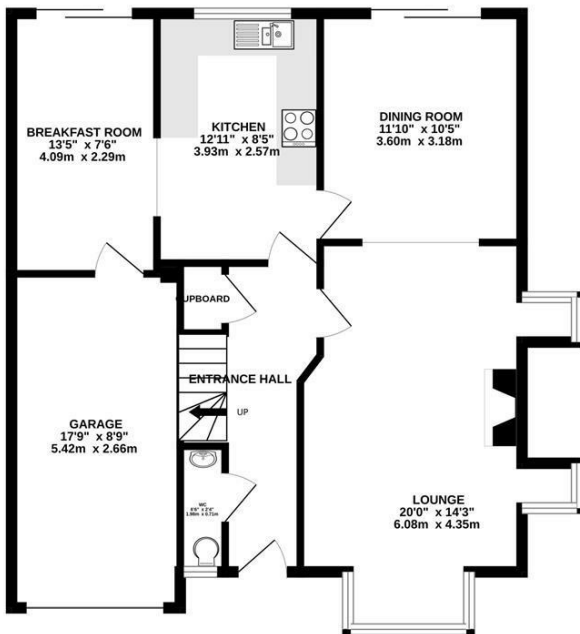






**GROUND FLOOR**  
800 sq.ft. (74.3 sq.m.) approx.

**1ST FLOOR**  
839 sq.ft. (77.9 sq.m.) approx.



**TOTAL FLOOR AREA : 1639 sq.ft. (152.3 sq.m.) approx.**

Whilst every attempt has been made to ensure the accuracy of the floorplan contained here, measurements of doors, windows, rooms and any other items are approximate and no responsibility is taken for any error, omission or mis-statement. This plan is for illustrative purposes only and should be used as such by any prospective purchaser. The services, systems and appliances shown have not been tested and no guarantee as to their operability or efficiency can be given.  
Made with Metropix ©2025



Energy Efficiency Rating		Current	Potential
Very energy efficient - lower running costs			
(92 plus)	A		
(81-91)	B		
(69-80)	C		
(55-68)	D	64	69
(39-54)	E		
(21-38)	F		
(1-20)	G		
Not energy efficient - higher running costs			
<b>England &amp; Wales</b>		EU Directive 2002/91/EC	