



JON KEYTE



@ [jon.keyte@expuk.com](mailto:jon.keyte@expuk.com)

 [jonkeyte.expuk.com](http://jonkeyte.expuk.com)

 07445 265 314

## 2 Polperro Close, Guide Price £215,000

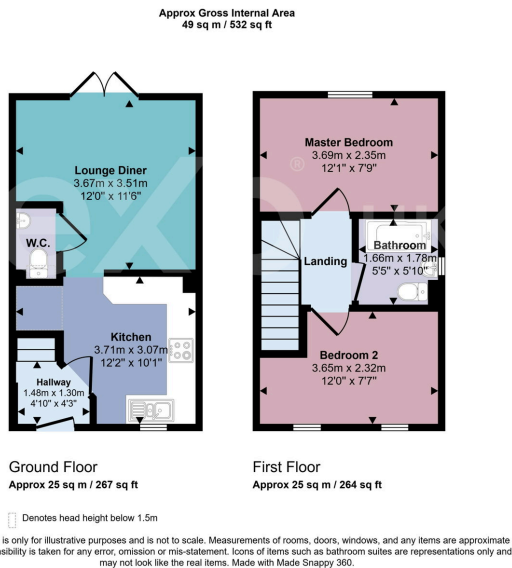
🛏️ 2 🚿 1 🚗 1



- To Arrange a Viewing, When Calling Please Quote JK1243
- Two Well Proportioned Bedrooms
- Cul-De-Sac Position
- Own Driveway
- Private Rear Garden
- Modern End of Terrace Home
- Ideal First Time Buyer Home/ Investment Property
- Modern Fitted Kitchen
- Useful Downstairs Cloakroom
- No Onward Chain!!



**To Arrange a Viewing, When Calling Please Quote JK1243 -** Tucked away in a quiet cul-de-sac, this home offers the perfect balance of peaceful living and everyday convenience. Start your mornings with coffee in the private garden, enjoy relaxed evenings in the bright living space, and benefit from a low-maintenance home designed to fit modern lifestyles. Whether you're taking your first step onto the property ladder, looking to downsize, or searching for a smart investment, this home offers flexibility and comfort in equal measure. With local amenities, transport links, and green spaces all within easy reach, you'll enjoy a lifestyle that combines tranquillity with accessibility, making day-to-day living both effortless and enjoyable.



Energy Efficiency Rating		Current	Potential
Very energy efficient - lower running costs			
(92 plus)	<b>A</b>		97
(81-91)	<b>B</b>	82	
(69-80)	<b>C</b>		
(55-68)	<b>D</b>		
(39-54)	<b>E</b>		
(21-38)	<b>F</b>		
(1-20)	<b>G</b>		
Not energy efficient - higher running costs			
<b>England &amp; Wales</b>		EU Directive 2002/91/EC	