

Apartment 28, £1,766 per month

(Other charges apply)

RICHMOND
VILLAGES

Part of Bupa



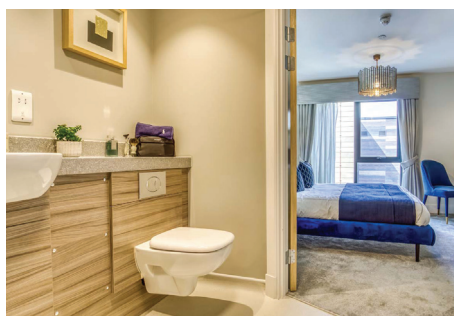
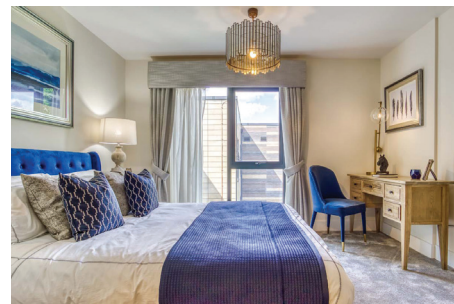
1



1



EPC - B



1 bedroom second floor apartment

Richmond Villages Cheltenham are pleased to offer this one, bedroom, second floor, assisted living apartment for rent, overlooking the gardens and woodland. The apartment offers easy access to communal facilities including the reception, the restaurant, bar & coffee area, library, wellness spa, and numerous terraces.

Specification

- The well-equipped fitted kitchenette has base units, sink and drainer, work surface, built-in microwave and an under-counter fridge/freezer.
- The spacious living / dining room has a private balcony, with a lovely view over the woodland along with a feature fireplace with an attractive surround.
- The bright and airy main bedroom has plenty of space for your belongings, with doors leading to an en-suite shower room.
- A beautifully tiled large shower room with a WC and wash hand basin set within a fully fitted vanity unit, with an under sink storage, grab rails and downlights to ceiling.
- You will enter the apartment into a spacious hallway, with a storage cupboard and doors to the living room and bedroom.
- TV and satellite points*.
- Well stocked flower borders and lawns maintained by the Village Gardeners.
- Allocated parking space for one car.

*Satellite subscription not included.

Important Notice: These particulars are intended to give a fair and substantially correct overall description. Other fees and charges apply, please contact the Village Advisers for further details. Generic images are used and are not representative of the property for rent.



01242 474 333

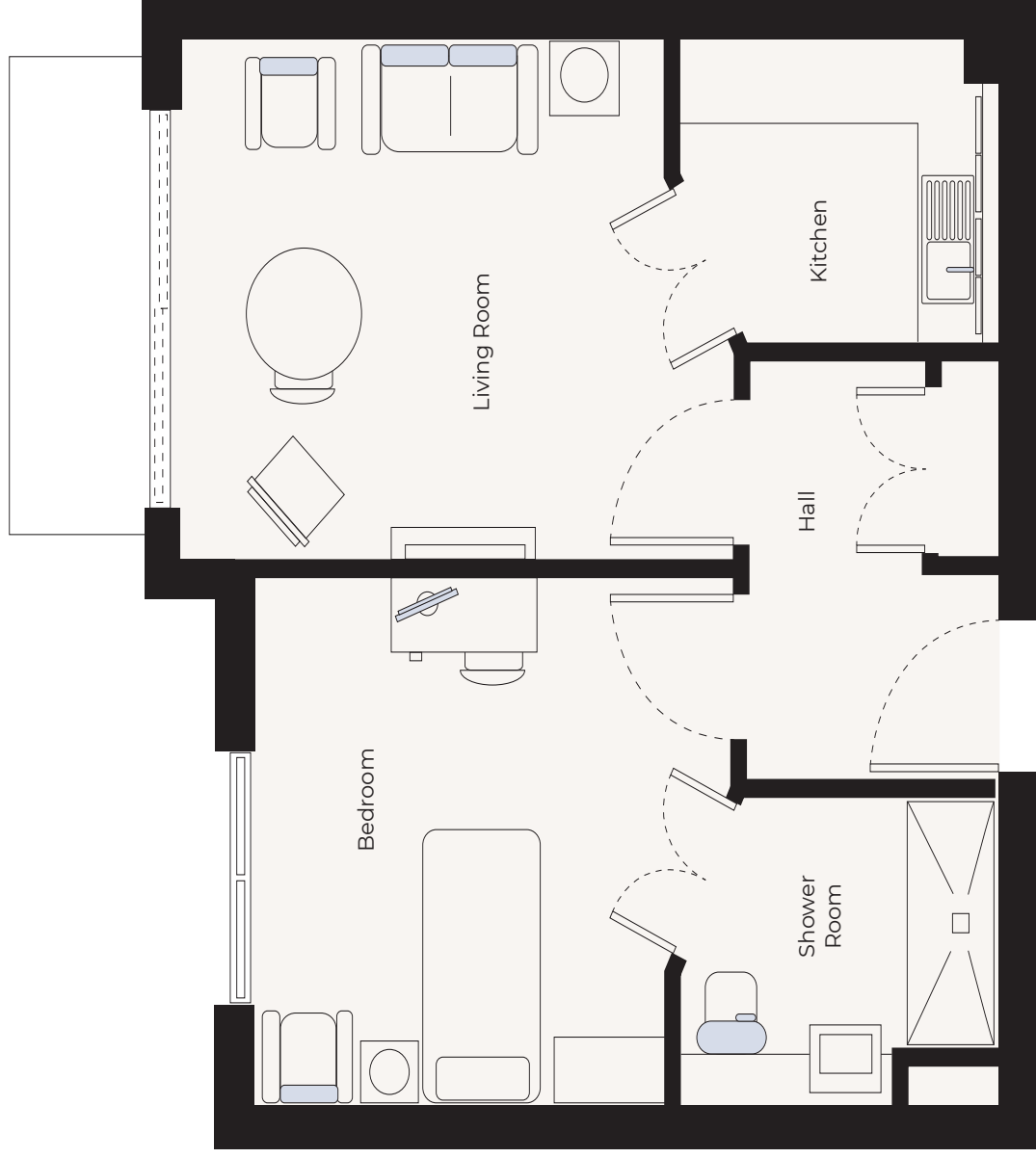
cheltenham@richmond-villages.com

Richmond Villages Cheltenham,
Hatherley Lane, Cheltenham, Gloucestershire GL51 6PN

Apartment 28

Second Floor | 45.66m² - 491ft²

- Kitchen
2500mm x 2120mm
8'2" x 6'11"
- Living Room
4600mm x 3610mm
15'1" x 11'10"
- Bedroom
3900mm x 3600mm
12'10" x 11'9"
- Shower Room
2500mm x 2120mm
8'2" x 6'11"
- Balcony
3750mm x 1800mm
8'2" x 6'11"



These particulars are intended to give a fair and substantially correct overall description.

Measurements have been taken at 1500mm skirting height.

All dimensions are approximate. Bedroom measurements include the wardrobe if applicable. Room measurements include bay windows if applicable.

Furniture layout is to give an indicative impression. Although all efforts have been made to ensure its accuracy at time of print dimensions, fixtures, fittings, finishes and specifications are subject to change without notice.

The properties are sold unfurnished.

