

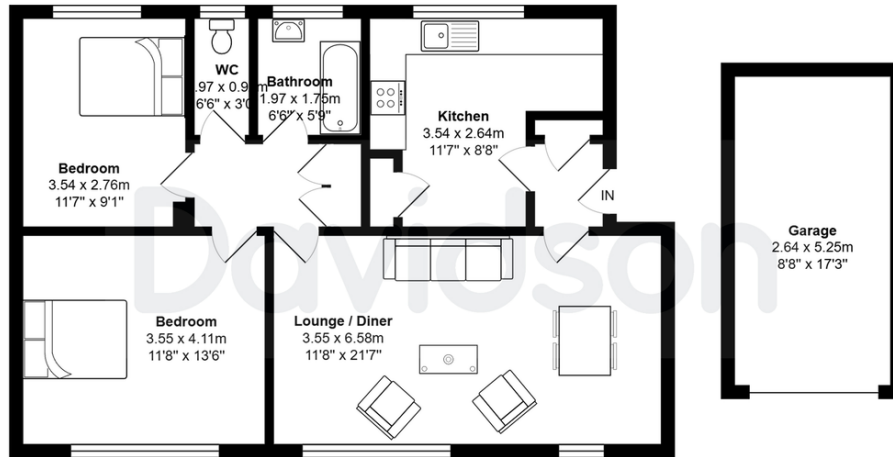


MICHAEL COURT, 115 BRISTOL ROAD
EDGBASTON, B5 7TS

£175,000
LEASEHOLD

MICHAEL COURT | Calthorpe Estate | Two bedrooms | First floor flat | Garage | Residents car park | Popular location in close proximity to The Priory Hospital and Edgbaston Cricket Ground

Davidson



Total Area: 74.9 m² ... 806 ft²

All measurements are approximate and for display purposes only

Floorplan measurements are for illustrative purpose only. Floor plan by www.sebastiano.co.uk.

Score	Energy rating	Current	Potential
92+	A		
81-91	B		
69-80	C		77 C
55-68	D	67 D	
39-54	E		
21-38	F		

Davidson

OFFICE
 22 Harborne Road
 Birmingham
 West Midlands
 B15 3AA

0121 455 7727
info@davidsonstates.co.uk
www.davidsonstates.co.uk

Agents Note: Whilst every care has been taken to prepare these particulars, they are for guidance purposes only. All measurements are approximate and are for general guidance purposes only and whilst every care has been taken to ensure their accuracy, they should not be relied upon and potential buyers/tenants are advised to recheck the measurements