

## Directions

## Contact

125 Hoe Street  
London  
E17 4RX

E: [lettings@hcolondon.com](mailto:lettings@hcolondon.com)

T: 02085 210 755

[hcolondon.com](http://hcolondon.com)



1 Bed  
Flat  
located in



# 5 Bourneside Crescent

London  
N14 6SD

£1,550 PCM



GROUND FLOOR PURPOSE BUILT FLAT --- AVAILABLE FROM THE 5TH JUNE --- SEPERATE KITCHEN --- DOUBLE BEDROOM --- GREAT LOCATION --- NEUTRAL DECOR, BRIGHT AND AIRY --- GOOD CONDITION --- ELECTRIC THROUGHOUT

London's Local Property Agent, Humphrey & Co Estates are proud to present this lovely ground floor flat. One double bedroom with a separate lounge and dining area fully furnished, fully fitted kitchen, built in wardrobe with mirror, neutral decor throughout as well as carpet throughout the property, bright and airy with lots of storage room. Fully tiled bathroom, stone throw away from Southgate Station. Please call our friendly lettings team to secure a viewing.

Lounge: 2.99m x 6.46m

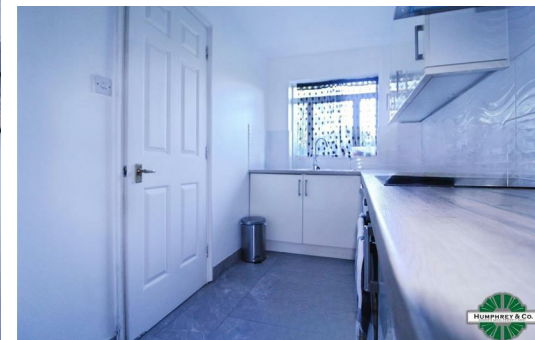
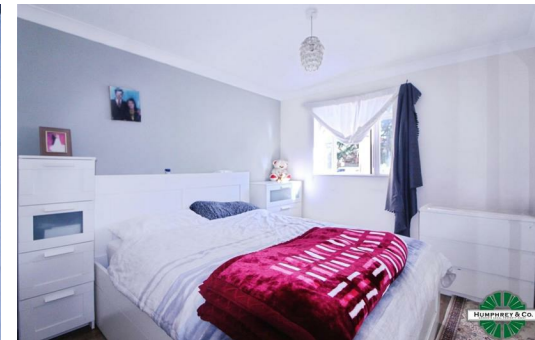
Kitchen: 1.83m x 3.60m

Double Bedroom: 3.23m x 3.01m

Bathroom: 1.78m x 2.44m

## Summary

London's Local Property Agent, Humphrey & Co Estates are proud to present this lovely ground floor flat. One double bedroom with a separate lounge and dining area fully furnished, fully fitted kitchen, built in wardrobe with mirror, neutral decor throughout as well as carpet throughout the property, bright and airy with lots of storage room. Fully tiled bathroom, stone throw away from Southgate Station. Please call our friendly lettings team to secure a viewing. Lounge: 2.99m x 6.46m Kitchen: 1.83m x 3.60m Double Bedroom: 3.23m x 3.01m Bathroom: 1.78m x 2.44m New Home: Non New Home



Energy Efficiency Rating		Current	Potential
Very energy efficient - lower running costs			
(92 plus) A			
(81-91) B			
(69-80) C			
(55-68) D			
(39-54) E			
(21-38) F			
(1-20) G			
Not energy efficient - higher running costs			
England & Wales		EU Directive 2002/91/EC	

