



## Grafton Terrace, NW5

### £1,440,000

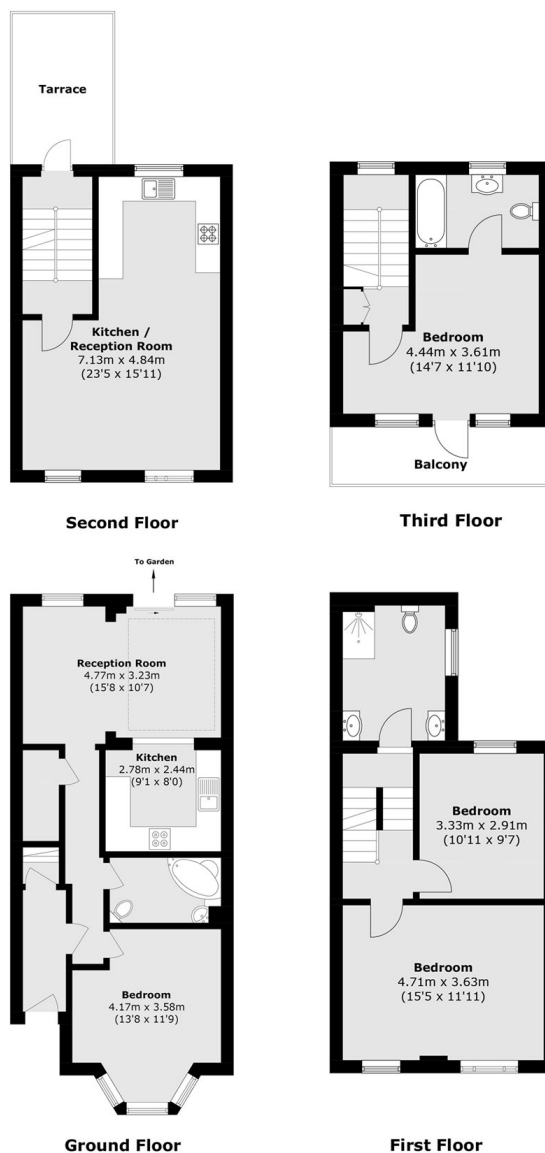
This mid terrace Victorian house has four bedrooms and three bathrooms. The property has high ceilings, a private garden and a roof terrace.

Grafton Terrace is equidistant between Belsize Park & Chalk Farm underground (Northern line) and a short distance to Kentish Town overground. The property is situated in a popular residential area with an array of local amenities and fashionable shops all close by.

### Features

- Four Bedrooms
- Freehold
- Private Garden
- Roof Terrace
- Great Location
- Chain Free

# Grafton Terrace, London, NW5



Total area (approx.): 153.2 sq. m (1649 sq. ft)  
Terrace area (approx.): 7.6 sq. m (81.8 sq. ft)  
Balcony area (approx.): 6.3 sq. m (67.8 sq. ft)