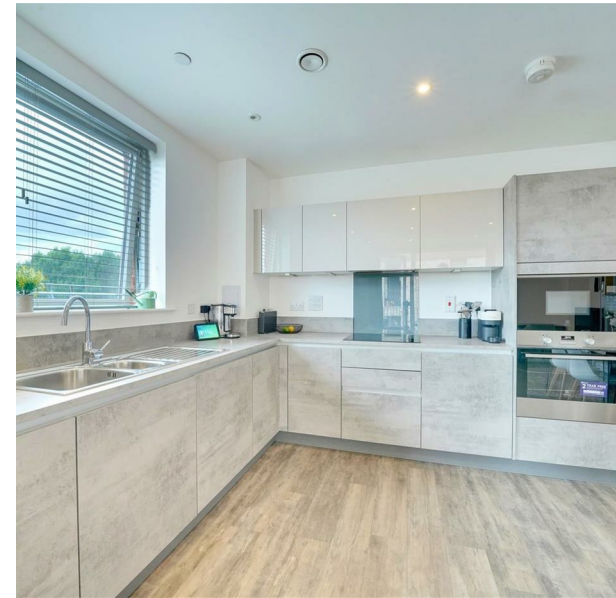


7, 171, Fairfield House South Street, Enfield, EN3 4GR
Offers in excess of £375,000



PINDROP PROPERTY

2 2 1 B



7, 171, Fairfield House South Street, Enfield, EN3 4GR

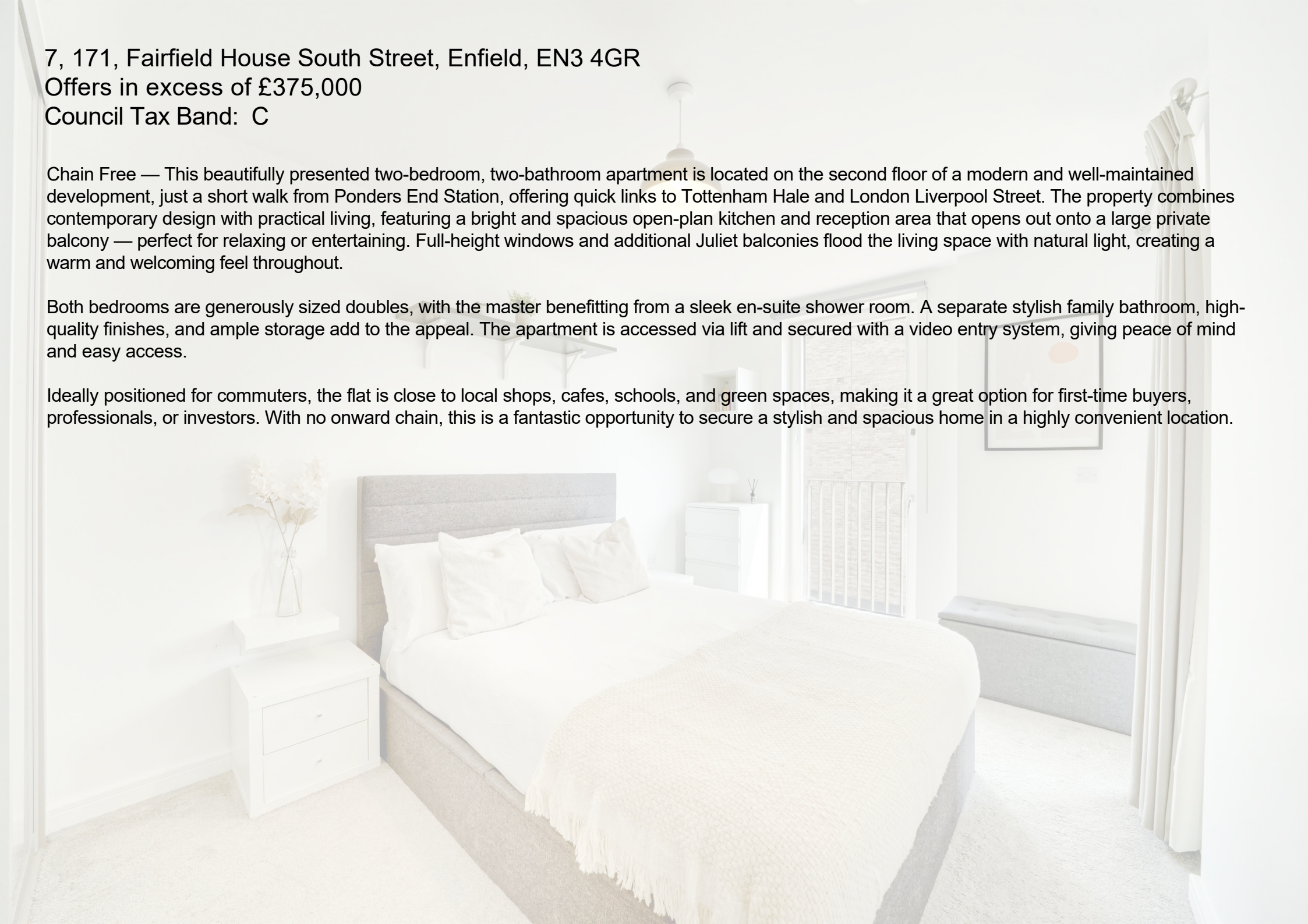
Offers in excess of £375,000

Council Tax Band: C

Chain Free — This beautifully presented two-bedroom, two-bathroom apartment is located on the second floor of a modern and well-maintained development, just a short walk from Ponders End Station, offering quick links to Tottenham Hale and London Liverpool Street. The property combines contemporary design with practical living, featuring a bright and spacious open-plan kitchen and reception area that opens out onto a large private balcony — perfect for relaxing or entertaining. Full-height windows and additional Juliet balconies flood the living space with natural light, creating a warm and welcoming feel throughout.

Both bedrooms are generously sized doubles, with the master benefitting from a sleek en-suite shower room. A separate stylish family bathroom, high-quality finishes, and ample storage add to the appeal. The apartment is accessed via lift and secured with a video entry system, giving peace of mind and easy access.

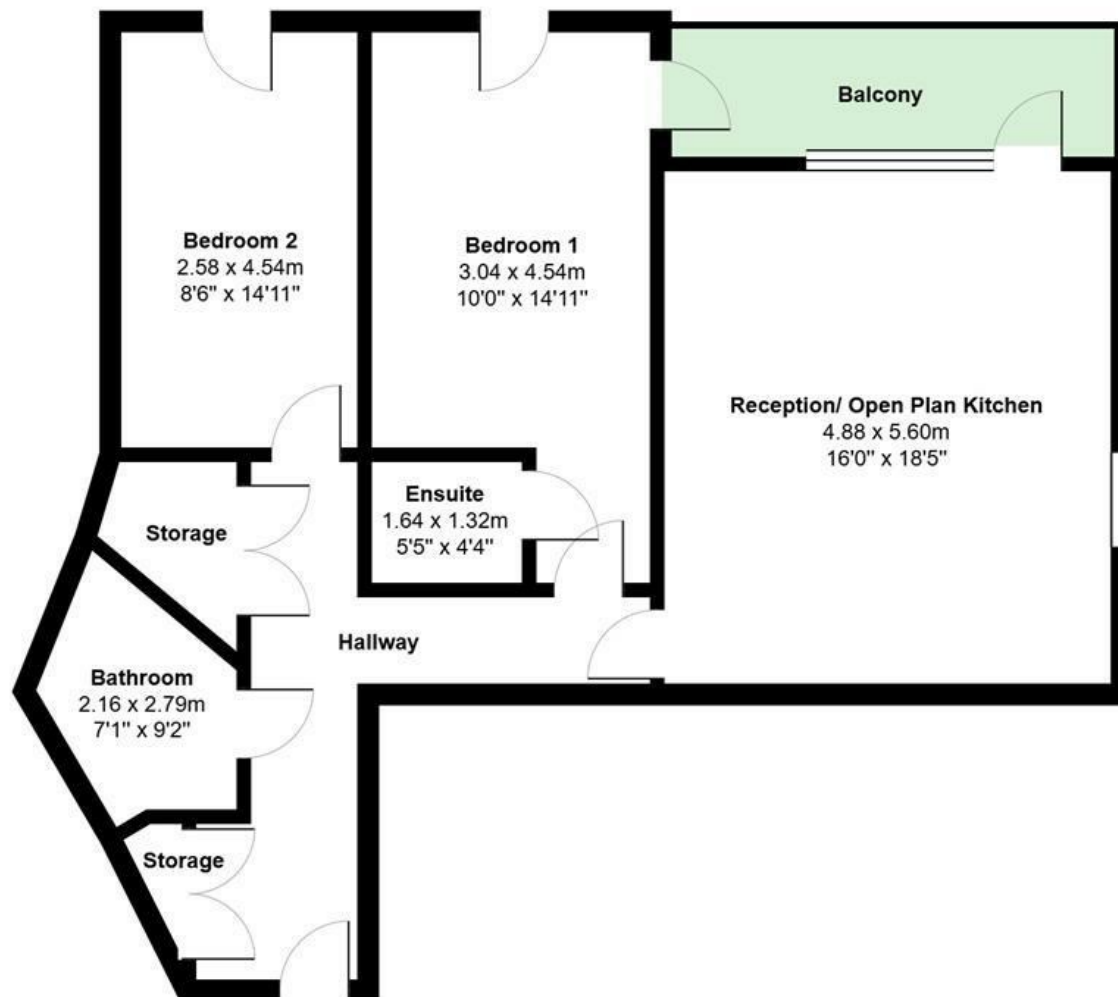
Ideally positioned for commuters, the flat is close to local shops, cafes, schools, and green spaces, making it a great option for first-time buyers, professionals, or investors. With no onward chain, this is a fantastic opportunity to secure a stylish and spacious home in a highly convenient location.











PINDROP PROPERTY

Second Floor

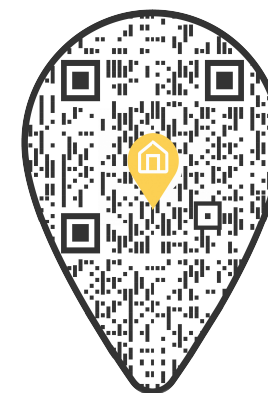
Total Area: 79.0 m² ... 850 ft² (excluding balcony)

All measurements are approximate and for display purposes only



PINDROP PROPERTY

0203 869 0201
info@pindropproperty.com
www.pindropproperty.com



Energy Efficiency Rating

	Current	Potential
Very energy efficient - lower running costs		
(92 plus) A		
(81-91) B	87	87
(69-80) C		
(55-68) D		
(39-54) E		
(21-38) F		
(1-20) G		
Not energy efficient - higher running costs		
EU Directive 2002/91/EC		
England & Wales		