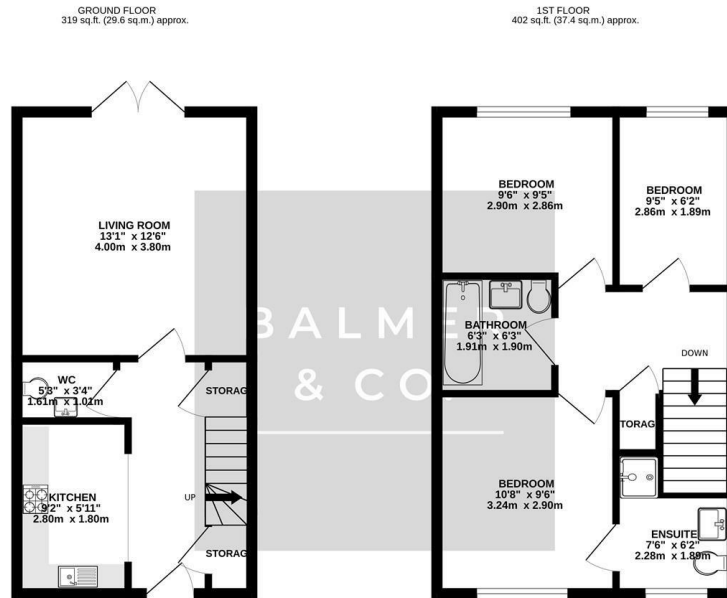


North Fold Close, Tyldesley, M29 8SE
£155,000

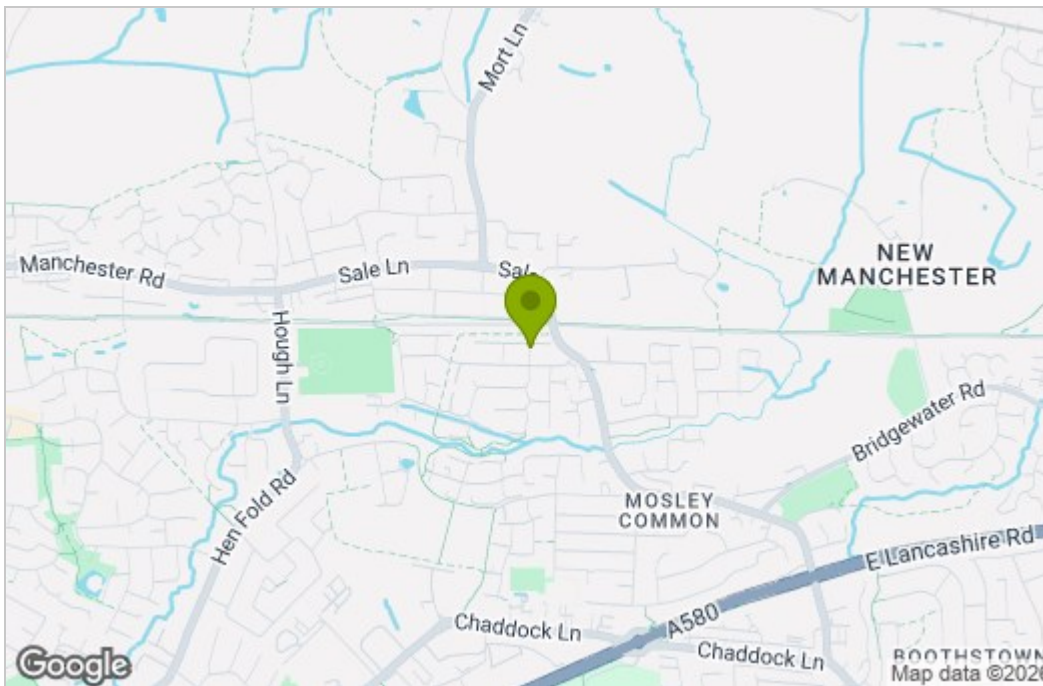


BALMER & CO in TYLDESLEY are delighted to offer FOR SALE this fantastic three bedroom mid-terrace house located on the ever popular Garret Meadows development in Mosley Common, Tyldesley. Offered for sale on a 60% shared ownership basis, with the option to purchase at 100% if required, it would suit a variety of buyers. The ground floor comprising in brief; entrance hallway, large living room with French doors leading to the rear garden, modern fitted kitchen, with a W.C completing the ground floor. To the first floor is a large master bedroom with ensuite shower room, second double bedroom, third single bedroom, with a three piece family bathroom completing the accommodation on offer. Externally there is a double driveway to the front for two vehicles, whilst to the rear there is a fully enclosed, South facing rear garden. Early viewings highly recommended, all enquiries welcome.

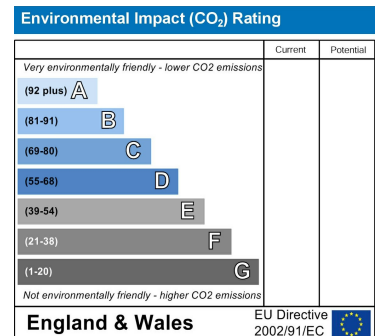
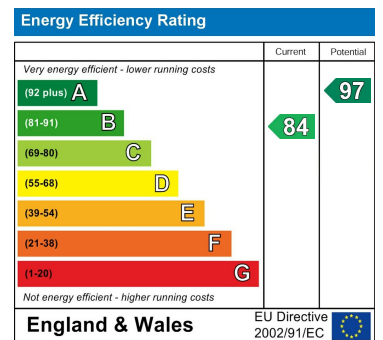
Floor Plan



Area Map



Energy Efficiency Graph



These particulars, whilst believed to be accurate are set out as a general outline only for guidance and do not constitute any part of an offer or contract. Intending purchasers should not rely on them as statements of representation of fact, but must satisfy themselves by inspection or otherwise as to their accuracy. No person in this firm's employment has the authority to make or give any representation or warranty in respect of the property.